

2020 4Runner



Let's
Go
Places

Anytime. Anywhere. The 2020 4Runner.

The best stories begin where the trail map ends. 4Runner has been delivering on this promise for over 30 years, and the 2020 Toyota 4Runner is ready to take you to places you never thought possible. Proven body-on-frame construction, advanced off-road technologies⁶² and a tough powertrain mean that this SUV can easily go where lesser trucks can't. And with its suite of available convenient technologies, just connect your compatible iPhone^{®63} to access its integrated Apple CarPlay^{®6}. You can also enjoy the advanced voice-activated capabilities of Alexa⁷ compatibility to stay connected long after the city has left your rearview mirror. The next great campfire story is yours for the making. Let's keep it wild.



TRD Off-Road Premium shown in Barcelona Red Metallic.

See numbered footnotes in Disclosures section.

treadlightly![®]
OFFICIAL PARTNER



Built to take on what Mother Nature dishes out.

4Runner's heritage has always been one of toughness. That's why the 2020 4Runner is built utilizing rugged body-on-frame construction, for optimized strength and durability. All 4Runners get beefy skid plates to help protect the engine, front suspension and fuel tank. 4x4 models also get a skid plate to help protect the transfer case. This all rides on a suspension made up of independent double-wishbones up front, and a 4-link and coil-spring setup in the rear. This proven combination gives 4Runner a ride that's smooth in the city, yet tough enough to take on your favorite trail.



APPROACH WITH CONFIDENCE⁶²

4Runner is built to handle almost any terrain.⁶² With up to 9.6 inches of ground clearance, an approach angle of 33 degrees and a departure angle of 26 degrees, all 4x4 4Runners are ready to help keep the adventure going.



KDSS^{62, 64, 65}

The available Kinetic Dynamic Suspension System (KDSS) helps 4Runner make molehills out of mountains. When taking on extreme off-road terrain, this system automatically decouples 4Runner's sway bars as needed, helping improve wheel articulation. And when the terrain goes back to smooth and flat, the sway bars automatically reconnect.



HAC/DAC

Standard Hill Start Assist Control (HAC)⁶⁶ helps keep the vehicle from rolling backward when switching from brake to accelerator on a steep incline. The available Downhill Assist Control (DAC)⁶⁷ selectively applies the brakes to help keep a controlled speed on steep or slippery descents.

CAPABILITY



Limited shown in Classic Silver Metallic.

Out here, lesser vehicles are an endangered species.

The best trails aren't known for their easygoing demeanor. Good thing 4Runner's ready to take on almost every terrain. Its available Kinetic Dynamic Suspension System (KDSS) allows for extra wheel articulation when needed. Available Crawl Control (CRAWL)³⁵ assists the driver in determining an optimal combination of low speed and traction. And with the available dial-type transfer case, finding the right off-road mode is as simple as turning a knob.



LOCKING REAR DIFFERENTIAL

To help you negotiate uncertain terrain, 4Runner TRD Off-Road has an electronically controlled locking rear differential that distributes engine power evenly to both rear wheels, so they move at the same speed, even if one is off the ground⁶². It also ensures a predictable output to help you maintain a controlled pace over obstacles.



MULTI-TERRAIN SELECT

Available Multi-terrain Select allows you to choose from four modes that will regulate wheelspin by adjusting the engine throttle setting and braking pressure to help provide you with optimized traction in various off-road situations.



AVAILABLE CRAWL CONTROL (CRAWL)³⁵

This advanced system automatically modulates the throttle and brakes on five low-speed settings so you can keep your focus on steering through difficult terrain.

CAPABILITY



TRD Off-Road Premium shown in Barcelona Red Metallic.

See footnote number 62 in Disclosures section for more information on off-roading.

Take the reins, set the mood, choose a destination and charge on.

4Runner may be built to take on the rugged terrain, but its interior is designed for pure comfort. Intuitive controls make it easy to adjust everything from the climate control to off-road traction settings. A new 8-in. high-resolution touch-screen makes your playlist, navigation settings and more all look stunning. And with new tech like Apple CarPlay,⁶⁶ just pair your compatible iPhone⁶³ to access your music, phone book and more. The addition of Android Auto^{TM5} and Amazon Alexa⁷ compatibility also makes it easier than ever to stay connected.



ANDROID AUTO^{TM5} COMPATIBILITY

Android AutoTM puts many of your favorite Android^{TM4} apps right on 4Runner's 8-in. touch-screen. You can take calls, pull up your favorite playlist, and a whole lot more — all while your AndroidTM phone is safely stashed away.

AMAZON ALEXA⁷ COMPATIBILITY

Almost anywhere the road takes you, Amazon Alexa connectivity follows. With a smartphone connection and the Toyota+Alexa app, all you have to do is ask Alexa to play music, hear the news, check weather, control smart home devices and more.⁶⁶



APPLE CARPLAY⁶⁶ COMPATIBILITY

4Runner's equipped with Apple CarPlay⁶⁶ compatibility. Just plug in your compatible iPhone⁶³ and get directions, make calls, send and receive messages, listen to your own playlist and more — all via the familiar touch-screen interface. Screen depiction accurate as of summer 2019.



MULTIMEDIA



AVAILABLE JBL[®] SPEAKERS

The perfect soundtrack can make your adventures even more epic. That's why 4Runner is available with a powerful 15-speaker JBL[®] system that delivers rich, powerful sound.

Limited 4x4 interior shown in Redwood leather trim.

See numbered footnotes in Disclosures section.

Technology that keeps up with you.

Now there's more to love about 4Runner. Enjoy a new level of convenience and peace of mind with 4Runner's available technology features.



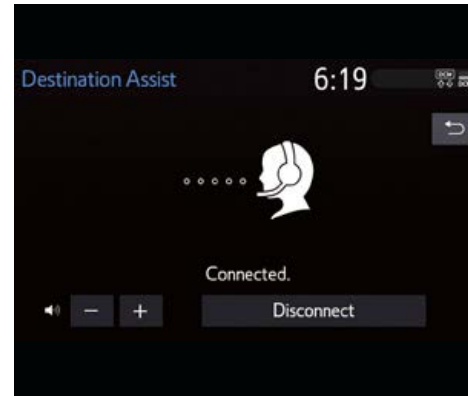
AVAILABLE REMOTE CONNECT²⁶

Locate your Toyota in a crowded parking lot, start the engine,⁶⁸ lock/unlock your doors⁶⁸ and more, using your compatible smart devices.⁶⁷ One-year trial included.²⁷



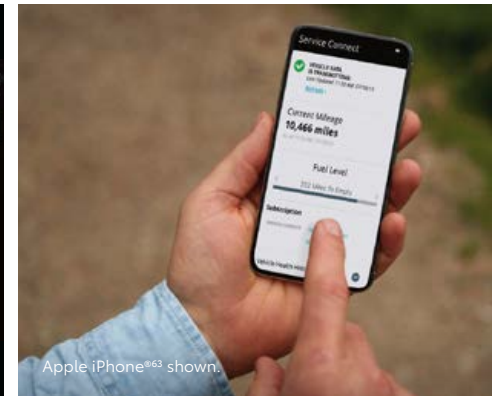
SAFETY CONNECT⁶¹⁴

Because the unexpected can happen at any time of day — or night. Emergency SOS assistance and 24/7 Toyota Roadside Assistance⁶⁹ help you drive with added peace of mind. One-year trial included.¹⁵



AVAILABLE DESTINATION ASSIST²⁸

Need directions? No problem. Destination Assist gives you 24/7 access to a live agent to help locate a destination and get directions. One-year trial included.²⁹



AVAILABLE SERVICE CONNECT²⁴

You keep track of your health info; now you can do the same for your 4Runner. Service Connect gives you personalized maintenance updates and vehicle health reports. Ten-year trial included.²⁵



WI-FI CONNECT¹⁶

Turn your 4Runner into a hotspot. 4G Wi-Fi Connect lets you easily connect up to five devices. And depending on your existing mobile provider, you can add the Wi-Fi Connect subscription to your current mobile plan. Three-month trial included!¹⁷

TRD Off-Road Premium shown in Barcelona Red Metallic.⁵⁹

See numbered footnotes in Disclosures section.



TRD Off-Road Premium shown in Barcelona Red Metallic.

See footnote number 62 in Disclosures section for more information on off-roading.

You've got freedom to roam. Outside and inside.

Exploring the vast unknown requires a great amount of space for company or cargo. 4Runner's roomy interior seats up to seven passengers and has plenty of features, like front and rear 12V power outlets³⁸ for charging personal electronics, a variety of storage options, and available power-adjustable driver and front passenger seats, to keep everyone comfortable no matter how long the journey.



SLIDING REAR CARGO DECK

Get quicker access to your stuff. The available sliding rear cargo deck can support up to 440 lbs⁵⁹ and helps make for an easy reach to your gear, or a quick setup before heading to the great outdoors.



POWER REAR GLASS

The 2020 4Runner features a power rear window, a signature element found across all generations of 4Runner. And best of all, it's standard. This rear glass raises and lowers with the push of a button, making it easier to grab your gear from the cargo area.⁵⁹



40/20/40 FOLD-FLAT SECOND-ROW SEATS

Every adventure has its own demands. With 4Runner's 40/20/40 fold-flat second-row seats, you can make room for everything you need by folding one or both seats down to accommodate up to 88.8 cubic feet of cargo.⁵⁹ When not folded down, the seatbacks recline for added passenger comfort.⁷⁰

UTILITY



Limited shown in Classic Silver Metallic with available running boards.

See numbered footnotes in Disclosures section.

The peace of mind you need to enjoy the peace of nature.

While your many adventures have earned you a bold reputation, you also make sure that your equipment will help keep you and your crew safe. That's why we've equipped 4Runner with an array of active and passive safety features. The standard Star Safety System™ is designed to help you avoid trouble. Our rigorous crash testing has helped us develop a comprehensive occupant-protection system that features eight standard airbags,⁴⁷ should trouble prove unavoidable.



INTEGRATED BACKUP CAMERA³⁴

When backing up, the area visible to the camera is displayed on the touch-screen. 4Runner's available front and rear parking assist sonar⁵⁰ beeps to tell you how close the bumpers are from an object. The faster it beeps, the closer the object is.



STAR SAFETY SYSTEM™

4Runner comes standard with the Star Safety System,™ a suite of six safety features designed to keep you out of harm's way. It includes Vehicle Stability Control (VSC),⁴⁴ Traction Control (TRAC), Anti-lock Brake System (ABS), Brake Assist (BA),⁴⁵ Electronic Brake-force Distribution (EBD) and Smart Stop Technology® (SST).⁴⁶



DRIVER AND FRONT PASSENGER ACTIVE HEADRESTS⁴⁸

Designed to optimize headrest position during certain types of rear-end collisions, driver and front passenger active headrests move slightly up and forward, so your head and neck are more effectively cushioned.



EIGHT AIRBAGS⁴⁷

A driver and front passenger Advanced Airbag System, driver and front passenger TAP (Thorax, Abdomen, Pelvis) front seat-mounted side airbags, driver and front passenger knee airbags and all-row (third-row airbags on models so equipped) Roll-sensing Side Curtain Airbags (RSCA) are all part of a system designed to help keep you safe.



High-tech backup for the road ahead.

Toyota Safety Sense™ P (TSS-P)⁴⁰ is an active safety package that comes standard on every new Toyota 4Runner. This advanced precautionary safety system combines the Pre-Collision System with Pedestrian Detection (PCS w/PD)⁴¹, Lane Departure Alert (LDA)⁴², Automatic High Beams (AHB)⁴³ and Dynamic Radar Cruise Control (DRCC)³² to assist you. TSS-P's comprehensive features create in-the-moment safety designed to help support your awareness and decision-making on the road.



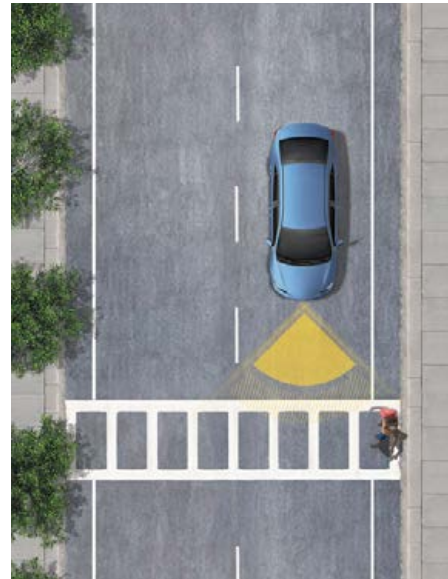
LANE DEPARTURE ALERT (LDA)⁴²

Under certain circumstances, Lane Departure Alert (LDA) is designed to help detect lane departure on roads with visible lane markings. LDA only activates when you're traveling at a speed of 32 mph or faster. When you hear and see the alert, after carefully checking the road around you, safely direct your vehicle back to the center of your lane.



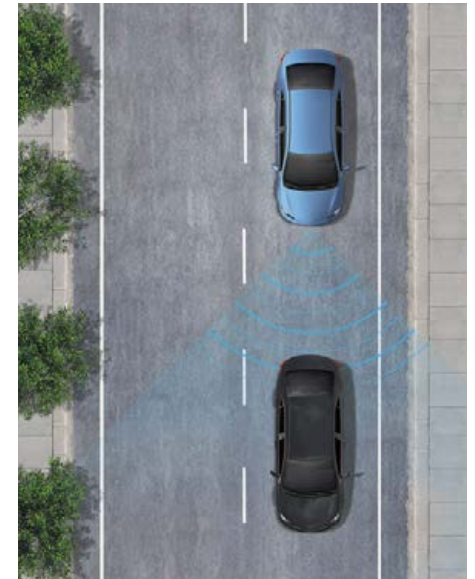
AUTOMATIC HIGH BEAMS (AHB)⁴³

The Automatic High Beams (AHB) feature is a safety system designed to help you see more clearly at night — without distracting other drivers. Designed to activate at speeds above 25 mph, AHB relies on an in-vehicle camera to help detect the headlights of oncoming vehicles and taillights of preceding vehicles, then automatically toggles between high and low beams accordingly to provide the appropriate amount of light. By using high beams more frequently, the system may allow for earlier detection of pedestrians and obstacles.



PRE-COLLISION SYSTEM WITH PEDESTRIAN DETECTION (PCS w/PD)⁴¹

Pre-Collision System with Pedestrian Detection (PCS w/PD) is designed to help keep the road safe by detecting a vehicle or a pedestrian in certain situations. By combining millimeter-wave radar with a camera capable of shape recognition, the system provides an audio/visual alert, warning you of a possible collision under certain circumstances. If you don't react, the system is designed for automatic braking support to help mitigate the potential for a collision.



DYNAMIC RADAR CRUISE CONTROL (DRCC)³²

Intended for highway use and similar to "constant speed" cruise control, Dynamic Radar Cruise Control (DRCC) lets you drive at a preset speed. DRCC uses vehicle-to-vehicle distance control, which adjusts your speed, to help you maintain a preset distance from vehicles ahead of you that are driving at a slower speed. If a driver is traveling slower than you, or within your preset range, DRCC will automatically slow your vehicle down without deactivating cruise control. If DRCC determines you need to slow down more, an audio and visual alert notifies you and brakes are applied.

TRD PRO SERIES

TRD PRO

Ultimate toughness. Proven capability.

How do we make an off-road legend even more capable? Simple: We give it to the engineers at Toyota Racing Development (TRD). 4Runner TRD Pro is the culmination of our off-road know-how, boasting upgraded features that include a robust suspension, TRD-engineered alloy wheels and aggressive off-road tires. And with a heritage-inspired grille, TRD Pro badging and a ¼-in.-thick aluminum skid plate that protects things up front, this rugged body-on-frame SUV fears no trail.



TRD Pro shown in Super White.

TRD PRO SERIES



TRD-TUNED FOX^{®58} SHOCKS AND TRD-TUNED SUSPENSION

Take your adventures to the next level. 4Runner TRD Pro's suspension features oversized FOX[®] high-performance shocks — with remote reservoirs on the rear shocks — and TRD-tuned front springs to help carry you over unforgiving terrain.⁶²

See numbered footnotes in Disclosures section.



TRD ROOF RACK⁶⁴

Pack it up and strap it down. 4Runner TRD Pro's rugged roof basket lets you bring more gear for more adventure.

NITTO^{®71} TERRA GRAPPLER^{®72} ALL-TERRAIN TIRES

4Runner TRD Pro's unique alloy wheels come wrapped in Nitto[®] Terra Grappler[®] all-terrain tires for more on-road comfort and enhanced off-road traction.



TRD-STAMPED ALUMINUM FRONT SKID PLATE

A unique TRD-stamped aluminum front skid plate comes standard on 4Runner TRD Pro. Constructed from 1/4-in.-thick aluminum, this piece helps protect crucial mechanical components underneath the front end, so you can go even farther beyond the map.⁶²

TRD PRO

What is TRD?

Toyota Racing Development (TRD) is Toyota's factory-backed racing division. While TRD USA has been building go-fast parts for Toyotas since 1979, our racing legacy traces back well over two decades before that. With a history rich in motorsports, TRD engineers have continued to apply their knowledge to help enthusiasts get more performance from their vehicles, while maintaining factory levels of quality and reliability. Our TRD Pro Series vehicles are factory-tuned and built to take you way off-road.⁶² These are more than just parts; our engineers spend countless hours building, testing and tuning with passion. And with capability this exciting, our TRD Pro Series vehicles will help fuel your passion too.

ACCESSORIES

You know your 4Runner is supremely capable right out of the box. But when you want to crank up the attitude, turn to those who know your 4Runner best. Toyota Racing Development (TRD) brings you a line of accessories engineered just for your 4Runner. Each and every part is designed to give you maximum performance with proven dependability. And it's all available from your local Toyota dealer. All you have to do is pick out which parts are right for you.

OTHER TRD PERFORMANCE PARTS AND ACCESSORIES

- TRD 17-in. matte-gray alloy wheels³
- TRD air filter
- TRD oil cap
- TRD oil filter
- TRD radiator cap

See numbered footnotes in Disclosures section.



TRD PRO ALL-WEATHER FLOOR LINERS³⁷

Floor liners embossed with the TRD Pro logo add protection and style to 4Runner's cabin.

TRD EXHAUST

The bark to match the powerful V6 bite. This cat-back exhaust is constructed from 304 stainless steel, and its precise CNC mandrel bends help maximize efficiency. Helping finish off the package is a chrome-plated, dual-walled tip with embossed TRD logo.



TRD 17-IN. MATTE-BLACK ALLOY WHEELS³

Cutting-edge style. Trail-ready toughness. These TRD 17-in. matte-black alloy wheels amplify 4Runner TRD Pro's presence on- and off-road.

TRD PRO SERIES



TRD Pro shown in Super White.

See footnote number 62 in Disclosures section for more information on off-roading.

4RUNNER SPECIAL EDITIONS

4Runner Nightshade Edition

Arrive with attitude. The Nightshade Edition available for 4Runner shows off this SUV's darker side with its 20-in. black alloy wheels, black chrome bumper accents and black interior accents.



Nightshade Edition 4x4 shown in Magnetic Gray Metallic.

4RUNNER SPECIAL EDITIONS

4Runner Venture Special Edition

The all-new 4Runner Venture Special Edition brings extra style and utility to all your on- and off-road adventures. It features all the same great equipment found on 4Runner TRD Off-Road Premium, and adds exclusive 17-in. dark metallic gray alloy wheels,³ a standard Yakima® MegaWarrior roof-mounted cargo basket,² black door handles, a black rear spoiler and rugged all-weather floor liners.³⁷



Venture Special Edition shown in Barcelona Red Metallic.

Do not overload your vehicle. See Owner's Manual for weight limits and restrictions. Always properly secure cargo and cargo area. See footnote number 3 in Disclosures section for more information on off-roading.



SR5

Drivetrain

- 4.0-Liter DOHC 24-Valve V6 with Dual Independent Variable Valve Timing with intelligence (VVT-i); 270 hp @ 5600 rpm; 278 lb.-ft. @ 4400 rpm; 5-speed automatic transmission
- Rear-Wheel Drive (RWD) or part-time 4WD system with Active Traction Control (A-TRAC)
- Automatic Limited-Slip Differential⁵⁴ (Auto LSD on 4x2 models only)
- Downhill Assist Control (DAC)⁵⁷ (4x4 models only) and Hill Start Assist Control (HAC)⁵⁶

Exterior Features

- Integrated fog lights
- Projector-beam headlights with smoked trim
- Skid plates — on engine/front suspension, fuel tank and transfer case (transfer case on 4x4 models only)
- 17-in. 6-spoke alloy wheels with P265/70R17 tires

Interior Features

- Backup camera³⁴ with projected path
- Leather-trimmed tilt/telescopic steering wheel with audio and Bluetooth^{®10} hands-free phone and voice command controls
- Fabric-trimmed front seats; 8-way power-adjustable driver's seat with power lumbar support; 4-way adjustable front passenger seat
- Fabric-trimmed 40/20/40 split reclining and fold-flat second-row seat
- Audio with eight speakers, and Android Auto^{™5} & Apple CarPlay^{®6} & Amazon Alexa⁷ compatible

Safety Features

- Toyota Safety Sense[™] P (TSS-P)⁴⁰ includes:
 - Pre-Collision System with Pedestrian Detection (PCS w/PD)⁴¹
 - Lane Departure Alert (LDA)⁴²
 - Automatic High Beams (AHB)⁴³
 - Dynamic Radar Cruise Control (DRCC)³²

Options

- Running boards
- 50/50 split fold-flat third-row seat and sliding second row with passenger-side one-touch access to third-row seat
- Sliding rear cargo deck with under-floor storage box (not available with third row)
- Premium Audio with Dynamic Navigation,²¹ and Android Auto^{™5} & Apple CarPlay^{®6} & Amazon Alexa⁷ compatible



SR5 Premium

Adds to or replaces features offered on SR5

Exterior Features

- Heated power outside mirrors with turn signal indicators

Interior Features

- Smart Key System³³ with Push Button Start and remote illuminated entry
- SofTex[®]-trimmed³¹ heated front seats; 8-way power-adjustable driver's seat with power lumbar support; 4-way power-adjustable front passenger seat
- SofTex[®]-trimmed³¹ 40/20/40 split reclining and fold-flat second-row seat
- Premium Audio with Dynamic Navigation,²¹ and Android Auto^{™5} & Apple CarPlay^{®6} & Amazon Alexa⁷ compatible
- Auto-dimming rearview mirror

Options

- Power tilt/slide moonroof with sunshade
- Running boards
- SofTex[®]-trimmed³¹ 50/50 split fold-flat third-row seat and sliding second row with passenger-side one-touch access to third-row seat
- Sliding rear cargo deck with under-floor storage box (not available with third row)



TRD Off-Road

Adds to or replaces features offered on SR5

Drivetrain

- Part-time 4WD system with Active Traction Control (A-TRAC)
- Hill Start Assist Control (HAC)⁵⁶ Multi-terrain Select and Crawl Control (CRAWL)³⁵
- Locking rear differential

Exterior Features

- 17-in. 7-spoke alloy wheels with P265/70R17 tires and black-painted accents
- Color-keyed front and rear bumpers with silver accents and color-keyed hood scoop
- "TRD Off-Road" external hard badges

Interior Features

- Overhead console with Multi-terrain Select and Crawl Control (CRAWL)³⁵ switches
- TRD shift knob
- TRD Off-Road floor mats³⁷
- Audio Plus with eight speakers, and Android Auto^{™5} & Apple CarPlay^{®6} & Amazon Alexa⁷ compatible

Options

- Running boards
- Kinetic Dynamic Suspension System (KDSS)
- Sliding rear cargo deck with under-floor storage box
- Premium Audio with Dynamic Navigation,²¹ and Android Auto^{™5} & Apple CarPlay^{®6} & Amazon Alexa⁷ compatible



TRD Off-Road Premium

Adds to or replaces features offered on TRD Off-Road

Exterior Features

- Heated power outside mirrors with turn signal indicators

Interior Features

- Smart Key System³³ with Push Button Start and remote illuminated entry
- SofTex[®]-trimmed³¹ heated front seats; 8-way power-adjustable driver's seat with power lumbar support; 4-way power-adjustable front passenger seat
- SofTex[®]-trimmed³¹ 40/20/40 split reclining and fold-flat second-row seat
- Premium Audio with Dynamic Navigation,²¹ and Android Auto^{™5} & Apple CarPlay^{®6} & Amazon Alexa⁷ compatible
- Auto-dimming rearview mirror
- "TRD" red lettering on driver and front passenger headrests

Options

- Power tilt/slide moonroof with sunshade
- Running boards
- Kinetic Dynamic Suspension System (KDSS)
- Sliding rear cargo deck with under-floor storage box

Venture Special Edition

Adds to or replaces features offered on TRD Off-Road Premium

Exterior

- 17-in. dark gray metallic alloy wheels³⁵ with P265/70R17 tires
- Blacked-out Toyota emblems, outer door handles, and side mirrors
- Roof rails with cross bars and Yakima[®] MegaWarrior cargo basket²
- Black rear spoiler with LED center high-mount stop light and integrated concealed rear wiper with mist cycle
- All-weather floor liners³⁷



Limited

Adds to or replaces features offered on SR5 Premium

Drivetrain

- Rear-Wheel Drive (RWD) or full-time 4WD system with Active Traction Control (A-TRAC) and Torsen^{®55} limited-slip center differential with locking feature
- X-REAS Sport Enhancement Suspension

Exterior Features

- 20-in. split 6-spoke alloy wheels with P245/60R20 tires
- Power tilt/slide moonroof with sunshade
- Front and rear parking assist sonar⁵⁰
- Color-keyed front and rear bumpers and side rocker panels with chrome inserts, chrome door handles and chrome-accented front grille insert

Interior Features

- Perforated leather-trimmed heated and ventilated front seats; 8-way power-adjustable driver's seat with memory function and power lumbar support; 4-way power-adjustable front passenger seat
- Premium Audio with Dynamic Navigation,²¹ JBL[®] w/Clari-Fi^{®30} and Android Auto^{™5} & Apple CarPlay^{®6} & Amazon Alexa⁷ compatible
- Dual zone automatic climate control with air filter and second-row vents

Options

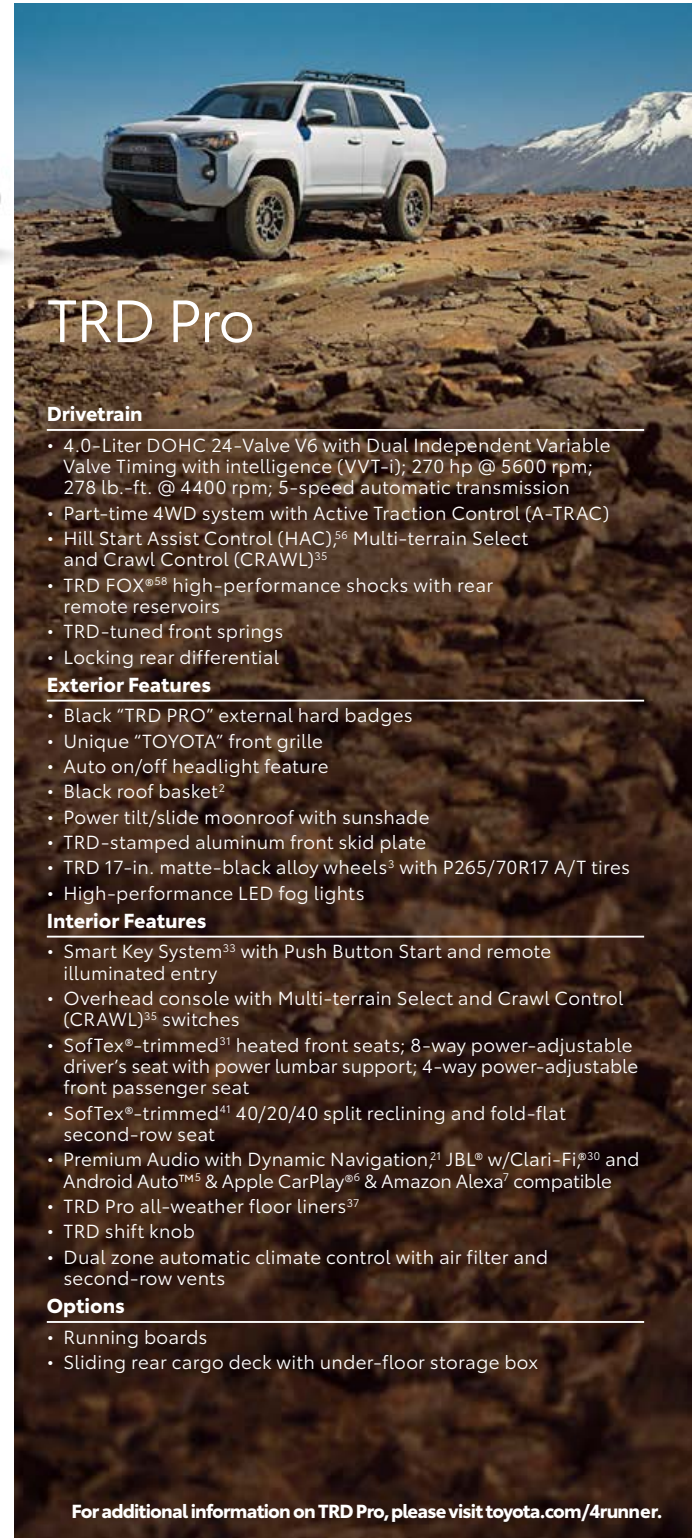
- Automatic running boards
- Leather-trimmed 50/50 split fold-flat third-row seat and sliding second row with passenger-side one-touch access to third row
- Sliding rear cargo deck with under-floor storage box (not available with third row)

Nightshade Edition

Adds to or replaces features offered on Limited

Exterior

- 20-in. black alloy wheels
- Black exterior accents including front and rear bumper spoilers, outer door handles, rocker panels, roof rails, mirrors, window moldings, garnishes and exhaust tip
- Black interior trim including steering wheel, shift knob, inner door grips and center console panel
- Black badge overlays



TRD Pro

Drivetrain

- 4.0-Liter DOHC 24-Valve V6 with Dual Independent Variable Valve Timing with intelligence (VVT-i); 270 hp @ 5600 rpm; 278 lb.-ft. @ 4400 rpm; 5-speed automatic transmission
- Part-time 4WD system with Active Traction Control (A-TRAC)
- Hill Start Assist Control (HAC)⁵⁶ Multi-terrain Select and Crawl Control (CRAWL)³⁵
- TRD FOX^{®58} high-performance shocks with rear remote reservoirs
- TRD-tuned front springs
- Locking rear differential

Exterior Features

- Black "TRD PRO" external hard badges
- Unique "TOYOTA" front grille
- Auto on/off headlight feature
- Black roof basket²
- Power tilt/slide moonroof with sunshade
- TRD-stamped aluminum front skid plate
- TRD 17-in. matte-black alloy wheels³ with P265/70R17 A/T tires
- High-performance LED fog lights

Interior Features

- Smart Key System³³ with Push Button Start and remote illuminated entry
- Overhead console with Multi-terrain Select and Crawl Control (CRAWL)³⁵ switches
- SofTex[®]-trimmed³¹ heated front seats; 8-way power-adjustable driver's seat with power lumbar support; 4-way power-adjustable front passenger seat
- SofTex[®]-trimmed⁴¹ 40/20/40 split reclining and fold-flat second-row seat
- Premium Audio with Dynamic Navigation,²¹ JBL[®] w/Clari-Fi^{®30} and Android Auto^{™5} & Apple CarPlay^{®6} & Amazon Alexa⁷ compatible
- TRD Pro all-weather floor liners³⁷
- TRD shift knob
- Dual zone automatic climate control with air filter and second-row vents

Options

- Running boards
- Sliding rear cargo deck with under-floor storage box

For additional information on TRD Pro, please visit toyota.com/4runner.

COLOR/TRIM*

Color



Midnight Black Metallic

Nautical Blue Metallic



Barcelona Red Metallic

Magnetic Gray Metallic



Classic Silver Metallic

Blizzard Pearl⁷³

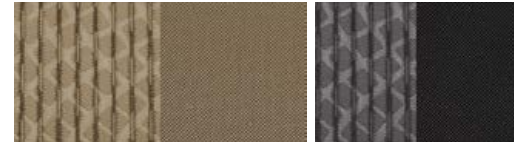


Super White

Army Green

Trim

SR5 fabric



Sand Beige

Graphite

SR5 SofTex^{®41}



Sand Beige

Graphite

TRD Off-Road fabric



Black

TRD Off-Road/Venture Special Edition/TRD Pro SofTex^{®41}



Black

Limited leather



Redwood

Sand Beige

Black

Nightshade Edition leather



Black

*Not all colors and trims available on all model grades. See dealer for details. See numbered footnotes in Disclosures section.

Combinations

COLOR SELECTOR	SR5	SR5 PREMIUM	TRD OFF-ROAD	TRD OFF-ROAD PREMIUM	VENTURE SPECIAL EDITION	LIMITED	TRD PRO	NIGHTSHADE EDITION
MIDNIGHT BLACK METALLIC	GRAPHITE SAND BEIGE	GRAPHITE SAND BEIGE SOFTEX ^{®31}	BLACK	BLACK SOFTEX ^{®31}	BLACK SOFTEX ^{®31}	BLACK REDWOOD SAND BEIGE	BLACK SOFTEX ^{®31}	BLACK
NAUTICAL BLUE METALLIC	GRAPHITE SAND BEIGE	GRAPHITE SAND BEIGE SOFTEX ^{®31}	BLACK	BLACK SOFTEX ^{®31}	BLACK SOFTEX ^{®31}	BLACK REDWOOD SAND BEIGE	•	•
ARMY GREEN	•	•	•	•	•	•	BLACK SOFTEX ^{®31}	•
BARCELONA RED METALLIC	GRAPHITE SAND BEIGE	GRAPHITE SAND BEIGE SOFTEX ^{®31}	BLACK	BLACK SOFTEX ^{®31}	BLACK SOFTEX ^{®31}	BLACK SAND BEIGE	•	•
MAGNETIC GRAY METALLIC	GRAPHITE SAND BEIGE	GRAPHITE SAND BEIGE SOFTEX ^{®31}	BLACK	BLACK SOFTEX ^{®31}	BLACK SOFTEX ^{®31}	BLACK REDWOOD SAND BEIGE	BLACK SOFTEX ^{®31}	BLACK
CLASSIC SILVER METALLIC	GRAPHITE	GRAPHITE SOFTEX ^{®31}	BLACK	BLACK SOFTEX ^{®31}	BLACK SOFTEX ^{®31}	BLACK REDWOOD	•	•
BLIZZARD PEARL ⁷³	•	•	•	•	•	BLACK REDWOOD SAND BEIGE	•	BLACK
SUPER WHITE	GRAPHITE SAND BEIGE	GRAPHITE SAND BEIGE SOFTEX ^{®31}	BLACK	BLACK SOFTEX ^{®31}	BLACK SOFTEX ^{®31}	•	BLACK SOFTEX ^{®31}	•

• = Not available

Wheels



SR5: 17-in. 6-spoke alloy wheel



TRD Off-Road: 17-in. 7-spoke alloy wheel



Venture Special Edition 17-in. dark metallic gray alloy wheel³



Limited: 20-in. split 6-spoke alloy wheel



TRD Pro: TRD 17-in. matte-black alloy wheel³



Nightshade Edition: 20-in. split 6-spoke black alloy wheel

ACCESSORIES

You own it, now it's time to make it yours with Genuine Toyota Accessories. All-weather floor liners³⁷ and an all-weather cargo tray⁵⁹ help keep things clean and protect your interior from outdoor dirt and grime. Roof rack cross bars⁶⁴ and a ball mount⁶⁰/trailer ball⁶⁰ help you carry more of the gear you need for your favorite adventures. Looking to enhance your stance? Find your look with TRD 17-in. matte-black alloy wheels³ or the new black chrome exhaust tip. For a complete list of accessories, go to toyota.com/4runner.

Alloy wheel locks

All-weather floor liners³⁷

Ball mount⁶⁰

Black running boards

Blackout emblem overlays

Cargo cover⁵⁹

Cargo divider⁵⁹

Cargo net — envelope⁵⁹

Cargo tote⁵⁹

Cargo tray⁵⁹

Carpet cargo mat⁵⁹

Carpet floor mats³⁷

Coin holder/ashtray cup

Covercraft® pet seat cover

Dashcam

Door edge guards

Emergency assistance kit

Exhaust tip — black chrome

Exhaust tip — chrome

First aid kit

Frameless HomeLink®³⁶ mirror

High-performance LED fog lights — black or chrome

Hood protector

Mudguards

Nightshade running boards

Paint Protection Film¹⁹

Predator tube step

Roof rack cross bars

Running boards — aluminum or chrome detail

Trailer ball⁶⁰

TRD 17-in. matte-black alloy wheels³

TRD 17-in. matte-gray alloy wheels³

TRD air filter

TRD front skid plate

TRD oil cap

TRD oil filter

TRD radiator cap

TRD shift knob

Universal tablet holder²⁰



Cargo tray⁵⁹



Roof rack cross bars



All-weather floor liners³⁷



Predator tube step



Blackout emblem overlays



Black chrome exhaust tip



TRD 17-in. matte-black alloy wheels³



Mudguards

FEATURES¹

	SR5	SR5 PREMIUM	TRD OFF-ROAD	TRD OFF-ROAD PREMIUM	VENTURE SPECIAL EDITION	LIMITED	NIGHTSHADE EDITION	TRD PRO
EXTERIOR								
Projector-beam headlights with smoked trim	S	S	S	S	S	S	S	S
Auto on/off headlight feature	—	—	—	—	—	S	S	S
LED taillights with smoked sport trim	S	S	S	S	S	S	S	S
Integrated fog lights	S	S	S	S	S	S	S	—
Integrated LED fog lights	—	—	—	—	—	—	—	S
Heated power outside mirrors	S	—	S	—	—	—	—	S
Heated power outside mirrors with turn signal indicators	—	S	—	S	S	S	S	—
Roof rails	S	S	S	S	—	S	S	—
Roof rails and Yakima® MegaWarrior cargo basket ²	—	—	—	—	S	—	—	—
Roof basket ²	—	—	—	—	—	—	—	S
Unique “TOYOTA” front grille	—	—	—	—	—	—	—	S
Black “TRD PRO” external hard badges	—	—	—	—	—	—	—	S
“TRD Off-Road” external hard badges	—	—	S	S	—	—	—	—
Chrome door handles with touch-sensor lock/unlock feature	—	—	—	—	—	S	—	—
Black door handles with touch-sensor lock/unlock feature	—	—	—	—	—	—	S	—
Black door handles	—	—	—	—	S	—	—	—
Power tilt/slide moonroof with sunshade	—	O	—	O	O	S	S	S
17-in. 6-spoke alloy wheels with P265/70R17 tires	S	S	—	—	—	—	—	—
17-in. 7-spoke alloy wheels with P265/70R17 tires and black-painted accents	—	—	S	S	—	—	—	—
17-in. matte-black TRD alloy wheels ³ with P265/70R17 A/T tires	—	—	—	—	—	—	—	S
17-in. dark metallic gray alloy wheels with P265/70R17 tires	—	—	—	—	S	—	—	—
20-in. split 6-spoke alloy wheels with P245/60R20 tires	—	—	—	—	—	S	S	—
Aerodynamic variable intermittent windshield wipers with mist cycle	S	S	S	S	S	S	S	S
Windshield wiper de-icer	S	S	S	S	S	S	S	S
Privacy glass on rear side, quarter and rear liftgate windows	S	S	S	S	S	S	S	S
Color-keyed rear spoiler with LED center high-mount stop light and integrated concealed rear wiper with mist cycle	S	S	S	S	—	S	S	S
Black rear spoiler with LED center high-mount stop light and integrated concealed rear wiper with mist cycle	—	—	—	—	S	—	—	—
Skid plates — on engine/front suspension, fuel tank and transfer case (transfer case on 4x4 models only)	S	S	S	S	S	S	S	S
TRD-stamped aluminum front skid plate	—	—	—	—	—	—	—	S
Front and rear mudguards	S	S	S	S	S	S	S	S
Automatic running boards	—	—	—	—	—	O	O	—
Running boards	O	O	O	O	O	—	—	O
INTERIOR								
Air conditioning with air filter and second-row vents	S	S	S	S	S	—	—	S
Dual zone automatic climate control with air filter and second-row vents	—	—	—	—	—	S	S	—
Audio — includes eight speakers, 8-in. touch-screen, AM/FM, Android Auto ^{TM5} & Apple CarPlay ^{®6} & Amazon Alexa ⁷ compatible, USB media port ⁸ , two USB charge ports ⁹ , advanced voice recognition ⁹ , hands-free phone capability and music streaming ¹⁰ via Bluetooth ^{®10} wireless technology, SiriusXM ^{®11} with 3-month All Access trial ¹² Connected Services ¹³ — Safety Connect ^{®14} with 1-year trial ¹⁵ Wi-Fi Connect ¹⁶ with up to 2 GB within 3-month trial ¹⁷ See toyota.com/audio-multimedia for details.	S	—	—	—	—	—	—	—
Audio Plus — includes eight speakers, 8-in. touch-screen, AM/FM/HD Radio ^{TM18} USB media port ⁸ , two USB charge ports ⁹ , advanced voice recognition ⁹ , hands-free phone capability and music streaming ¹⁰ via Bluetooth ^{®10} wireless technology, Android Auto ^{TM5} & Apple CarPlay ^{®6} & Amazon Alexa ⁷ compatible, SiriusXM ^{®11} with 3-month All Access trial ¹² Connected Services ¹³ — Safety Connect ^{®14} with 1-year trial ¹⁵ Wi-Fi Connect ¹⁶ with up to 2 GB within 3-month trial ¹⁷ See toyota.com/audio-multimedia for details.	—	—	S	—	—	—	—	—

See numbered footnotes in Disclosures section.

S = Standard O = Optional - = Not available


FEATURES¹ (continued)

INTERIOR (continued)	SR5	SR5 PREMIUM	TRD OFF-ROAD	TRD OFF-ROAD PREMIUM	VENTURE SPECIAL EDITION	LIMITED	NIGHTSHADE EDITION	TRD PRO
Premium Audio, Dynamic Navigation ²¹ — includes eight speakers, 8-in. touch-screen, AM/FM/HD Radio, ^{TM18} USB media port ⁸ , two USB charge ports ⁸ , Dynamic Navigation ²¹ with up to 3-year trial, ²² Dynamic POI Search, dynamic voice recognition ²³ hands-free phone capability and music streaming ¹⁰ via <i>Bluetooth</i> ^{®10} wireless technology, Android Auto ^{TM5} & Apple CarPlay ^{®6} & Amazon Alexa ⁷ compatible, SiriusXM ^{®11} with 3-month All Access trial, ¹² Connected Services ¹³ — Safety Connect ^{®14} with 1-year trial, ¹⁵ Wi-Fi Connect ¹⁶ with up to 2 GB within 3-month trial, ¹⁷ Destination Assist ²⁸ with 1-year trial. ²⁹ See toyota.com/audio-multimedia for details.	O	S	O	S	S	—	—	—
Premium Audio, Dynamic Navigation ²¹ and JBL [®] w/Clari-Fi ^{®30} — includes 15 speakers including subwoofer and amplifier, 8-in. touch-screen, AM/FM/HD Radio, ^{TM18} USB media port ⁸ , two USB charge ports ⁸ , Dynamic Navigation ²¹ with up to 3-year trial, ²² Dynamic POI Search, dynamic voice recognition ²³ hands-free phone capability and music streaming ¹⁰ via <i>Bluetooth</i> ^{®10} wireless technology, Android Auto ^{TM5} & Apple CarPlay ^{®6} & Amazon Alexa ⁷ compatible, SiriusXM ^{®11} with 3-month All Access trial, ¹² Connected Services ¹³ — Safety Connect ^{®14} with 1-year trial, ¹⁵ Service Connect ²⁴ with 10-year trial, ²⁵ Remote Connect ²⁶ with 1-year trial, ²⁷ Wi-Fi Connect ¹⁶ with up to 2 GB within 3-month trial, ¹⁷ Destination Assist ²⁸ with 1-year trial. ²⁹ See toyota.com/audio-multimedia for details.	—	—	—	—	—	S	S	S
Multi-Information Display (MID) with outside temperature, clock, average fuel economy and distance to empty	S	S	S	S	S	S	S	S
Fabric-trimmed front seats; 8-way power-adjustable driver's seat with power lumbar support; 4-way adjustable front passenger seat	S	—	S	—	—	—	—	—
Fabric-trimmed 40/20/40 split reclining and fold-flat second-row seat	S	—	S	—	—	—	—	—
Fabric-trimmed 50/50 split fold-flat third-row seat and sliding second row with passenger-side one-touch access to third-row seat	O	—	—	—	—	—	—	—
SofTex [®] -trimmed ³¹ heated front seats; 8-way power-adjustable driver's seat with power lumbar support; 4-way power-adjustable front passenger seat	—	S	—	S	S	—	—	S
SofTex [®] -trimmed ³¹ 40/20/40 split reclining and fold-flat second-row seat	—	S	—	S	S	—	—	S
SofTex [®] -trimmed ³¹ 50/50 split fold-flat third-row seat and sliding second row with passenger-side one-touch walk-in function	—	O	—	—	—	—	—	—
"TRD" red lettering on driver and front passenger headrests	—	—	—	S	S	—	—	S
Perforated leather-trimmed heated and ventilated front seats; 8-way power-adjustable driver's seat with memory function and power lumbar support; 4-way power-adjustable front passenger seat	—	—	—	—	—	S	S	—
Perforated leather-trimmed 40/20/40 split reclining and fold-flat second-row seat	—	—	—	—	—	S	S	—
Leather-trimmed 50/50 split fold-flat third-row seat and sliding second row with passenger-side one-touch walk-in function	—	—	—	—	—	O	O	—
Dynamic Radar Cruise Control (DRCC) ³²	S	S	S	S	S	S	S	S
Leather-trimmed tilt/telescopic steering wheel with audio, <i>Bluetooth</i> ^{®10} hands-free phone and voice-command controls	S	S	S	S	S	S	S	S
Optitron instrumentation with speedometer, tachometer, coolant temperature and fuel gauges; LCD display with odometer, tripmeters and average fuel economy; ECO Driving Indicator and warning messages	S	S	S	S	S	S	S	S
In-key remote keyless entry system	S	S	S	S	S	S	S	S
Smart Key System ³³ with Push Button Start and remote illuminated entry	—	S	—	S	S	S	S	S
Power windows with auto up/down and jam protection in all positions	S	S	S	S	S	S	S	S
Power rear liftgate window with auto up/down and jam protection	S	S	S	S	S	S	S	S
Rear liftgate window defogger with timer and UV protection	S	S	S	S	S	S	S	S
Power door locks with programmable auto door lock logic	S	S	S	S	S	S	S	S
Backup camera ³⁴ with projected path	S	S	S	S	S	S	S	S
Overhead console with sunglasses storage	S	S	—	—	—	S	S	—
Overhead console with Multi-terrain Select and Crawl Control (CRAWL) ³⁵ switches	—	—	S	S	S	—	—	S
HomeLink ^{®36} universal transceiver	—	S	—	S	S	S	S	S
Center-console storage compartment with coin, tissue and pen holders	S	S	—	—	—	S	S	—
Center-console storage compartment with coin, tissue and pen holders (carbon-fiber look)	—	—	S	S	S	—	—	S
Gated shift lever with sequential shift mode	S	S	S	S	S	S	S	S

See numbered footnotes in Disclosures section.

S = Standard O = Optional - = Not available

FEATURES¹ (continued)

INTERIOR (continued)	SR5	SR5 PREMIUM	TRD OFF-ROAD	TRD OFF-ROAD PREMIUM	VENTURE SPECIAL EDITION	LIMITED	NIGHTSHADE EDITION	TRD PRO
TRD shift knob	—	—	S	S	—	—	—	S
TRD Pro all-weather floor liners ³⁷	—	—	—	—	—	—	—	S
TRD Off-Road floor mats ³⁷	—	—	S	S	—	—	—	—
All-weather floor liners ³⁷	—	—	—	—	S	—	—	—
Sliding rear cargo deck with under-floor storage compartment (not available with available third row)	O	O	O	O	O	O	O	O
Two front, two rear and one cargo area 12V ³⁸ DC auxiliary power outlets	S	S	S	S	S	S	S	S
One cargo area 120V ³⁹ 100W/400W AC power outlet	S	S	S	S	S	S	S	S
Two rear USB ports ⁸	S	S	S	S	S	S	S	S
Auto-dimming rearview mirror	—	S	—	S	S	S	S	S
Glare-resistant mechanical inside rearview mirror	S	—	S	—	—	—	—	—
Dual sun visors with illuminated vanity mirrors and extenders	S	S	S	S	S	S	S	S
Ten cup and bottle holders (12 on three-row models)	S	S	S	S	S	S	S	S
Foot pedal parking brake	S	S	S	S	S	S	S	S
SAFETY AND CONVENIENCE								
Toyota Safety Sense™ P (TSS-P) ⁴⁰ - Pre-Collision System with Pedestrian Detection (PCS w/PD) ⁴¹ Lane Departure Alert (LDA) ⁴² Automatic High Beams (AHB) ⁴³ Dynamic Radar Cruise Control (DRCC) ³²	S	S	S	S	S	S	S	S
 Star Safety System™ — includes Vehicle Stability Control (VSC) ⁴⁴ Traction Control (TRAC), Anti-lock Brake System (ABS), Electronic Brake-force Distribution (EBD), Brake Assist (BA) ⁴⁵ and Smart Stop Technology® (SST) ⁴⁶	S	S	S	S	S	S	S	S
Driver and front passenger Advanced Airbag System ⁴⁷	S	S	S	S	S	S	S	S
Driver and front passenger TAP (Thorax, Abdomen, Pelvis) front seat-mounted side airbags, driver and front passenger knee airbags, and front and all-row (third-row airbags on all models) Roll-sensing Side Curtain Airbags (RSCA) ⁴⁷	S	S	S	S	S	S	S	S
Driver and front passenger active headrests ⁴⁸	S	S	S	S	S	S	S	S
3-point seatbelts for all seating positions; driver-side Emergency Locking Retractor (ELR) and Automatic/Emergency Locking Retractors (ALR/ELR) on all passenger belts	S	S	S	S	S	S	S	S
Driver and front passenger seatbelt pretensioners with force limiters	S	S	S	S	S	S	S	S
LATCH (Lower Anchors and Tethers for CHildren) includes lower anchors on outboard second-row seats and tether anchors on all second-row seats	S	S	S	S	S	S	S	S
Child-protector rear door locks and power window lockout	S	S	S	S	S	S	S	S
Side-impact door beams	S	S	S	S	S	S	S	S
Tire Pressure Monitor System (TPMS) ⁴⁹	S	S	S	S	S	S	S	S
Daytime Running Lights (DRL) with manual on/off feature	S	S	S	S	S	S	S	S
Front and rear parking assist sonar ⁵⁰	—	—	—	—	—	S	S	—
Anti-theft system with engine immobilizer ⁵¹	S	S	S	S	S	S	S	S
ToyotaCare ⁵² featuring a no cost maintenance plan with roadside assistance ⁵³	S	S	S	S	S	S	S	S

See numbered footnotes in Disclosures section.

S = Standard O = Optional - = Not available

SPECIFICATIONS

MECHANICAL/PERFORMANCE	SR5	SR5 PREMIUM	TRD OFF-ROAD	TRD OFF-ROAD PREMIUM	VENTURE SPECIAL EDITION	LIMITED	NIGHTSHADE EDITION	TRD PRO
ENGINE								
4.0-Liter V6 DOHC 24-Valve with Dual Independent Variable Valve Timing with intelligence (VVT-i); 270 hp @ 5600 rpm; 278 lb.-ft. @ 4400 rpm	S	S	S	S	S	S	S	S
EMISSION RATING								
Low Emission Vehicle II (LEV-II)	S	S	S	S	S	S	S	S
IGNITION SYSTEM								
Electronic, with Toyota Direct Ignition (TDI)	S	S	S	S	S	S	S	S
TRANSMISSION								
5-speed Electronically Controlled automatic Transmission with intelligence (ECT-i) and sequential shift mode	S	S	S	S	S	S	S	S
DRIVETRAIN								
Rear-Wheel Drive (RWD) with Automatic Limited-Slip Differential (Auto LSD) ⁵⁴	S	S	—	—	—	S	S	—
Part-time 4WD with Active Traction Control (A-TRAC) (4x4 models only)	S	S	S	S	S	—	—	S
Full-time 4WD with Active Traction Control (A-TRAC) and Torsen ^{®55} limited-slip center differential with locking feature (4x4 models only)	—	—	—	—	—	S	S	—
OFF-ROAD								
Approach/departure angle (degrees) (4x2/4x4)	30/26;33/26	30/26;33/26	33/26	33/26	33/26	30/26;33/26	30/26;33/26	33/26
Ground clearance (in.) (4x2/4x4)	9.0;9.6	9.0;9.6	9.6	9.6	9.6	9.0;9.6	9.0;9.6	9.6
Electronically controlled locking rear differential, Multi-terrain Select and Crawl Control (CRAWL) ³⁵	—	—	S	S	S	—	—	S
Hill Start Assist Control (HAC) ⁵⁶	S	S	S	S	S	S	S	S
Downhill Assist Control (DAC) ⁵⁷ (4x4 models only)	S	S	—	—	—	S	S	—
BODY CONSTRUCTION								
Reinforced body-on-frame construction	S	S	S	S	S	S	S	S
SUSPENSION								
Coil-spring independent double-wishbone front suspension with stabilizer bar; coil-spring 4-link with lateral rod rear suspension with stabilizer bar	S	S	S	S	S	S	S	S
Kinetic Dynamic Suspension System (KDSS)	—	—	O	O	O	—	—	—
X-REAS Sport Enhancement Suspension	—	—	—	—	—	S	S	—
TRD FOX ^{®58} high performance shocks with rear remote reservoirs	—	—	—	—	—	—	—	S
TRD-tuned front springs	—	—	—	—	—	—	—	S
STEERING								
Engine speed-sensing Variable Flow Control (VFC) power-assisted rack-and-pinion	S	S	S	S	S	S	S	S
Turning circle diameter, curb to curb (ft.)	37.4	37.4	37.4	37.4	37.4	37.4	37.4	37.4
BRAKES								
Power-assisted 4-wheel ventilated front disc brakes (Multi-terrain ABS on 4Runner TRD Off-Road)	S	S	S	S	S	S	S	S
DIMENSIONS								
EXTERIOR (in.)								
Overall height	71.5	71.5	71.5	71.5	71.5*	71.5	71.5	72.0
Overall width	75.8	75.8	75.8	75.8	75.8	75.8	75.8	75.8
Overall length	190.2	190.2	191.3	191.3	191.3	190.7	190.7	191.3
Wheelbase	109.8	109.8	109.8	109.8	109.8	109.8	109.8	109.8
Track (front/rear)	63.2/63.2	63.2/63.2	63.2/63.2	63.2/63.2	63.2/63.2	63.2/63.2	63.2/63.2	64.1/64.1

*without roof rack

See numbered footnotes in Disclosures section.

S = Standard O = Optional - = Not available

SPECIFICATIONS (continued)

INTERIOR (front/second-row/third-row seats) (in.)	SR5	SR5 PREMIUM	TRD OFF-ROAD	TRD OFF-ROAD PREMIUM	VENTURE SPECIAL EDITION	LIMITED	NIGHTSHADE EDITION	TRD PRO
Head room	39.3/38.6/34.3	39.3/38.6/34.3	39.3/38.6/34.3	39.3/38.6/34.3	—	—	—	—
Head room with moonroof	—	38.6/38.6/34.3	—	38.6/38.6/	38.6/38.6/	38.6/38.6/34.3	38.6/38.6/34.3	—
Shoulder room	57.8/57.8/57.7	57.8/57.8/57.7	57.8/57.8/—	57.8/57.8/—	57.8/57.8/—	57.8/57.8/57.7	57.8/57.8/57.7	57.8/57.8/—
Hip room	56.5/55.7/43.3	56.5/55.7/43.3	56.5/55.7/—	56.5/55.7/—	56.5/55.7/—	56.5/55.7/43.3	56.5/55.7/43.3	56.5/55.7/—
Leg room	41.7/32.9/29.3	41.7/32.9/29.3	41.7/32.9/—	41.7/32.9/—	41.7/32.9/—	41.7/32.9/29.3	41.7/32.9/29.3	41.7/32.9/—
WEIGHTS AND CAPACITIES								
Curb weight (lbs.)	4400	4400	4750	4750	4750	4525	4525	4750
Gross Vehicle Weight Rating (GVWR) (lbs.)	6100	6100	6300	6300	6300	6100	6100	6300
Cargo volume ⁵⁹ (cu. ft.) behind front/rear seats	89.7/47.2	89.7/47.2	—	—	—	—	—	—
Cargo volume ⁵⁹ (cu. ft.) behind front/rear seats (with sliding deck)	88.8/46.3	88.8/46.3	88.8/46.3	88.8/46.3	88.8/46.3	88.8/46.3	88.8/46.3	88.8/46.3
Cargo volume ⁵⁹ (cu. ft.) behind front/second-row/third-row seats	88.8/46.3/9.0	88.8/46.3/9.0	—	—	—	88.8/46.3/9.0	88.8/46.3/9.0	—
Fuel tank (gal.)	23	23	23	23	23	23	23	23
Seating capacity (standard/with optional third-row seat)	5/7	5/7	5	5	5	5/7	5/7	5
TOWING (SAE J2807 towing rating-compliant)⁶⁰								
Towing capacity (lbs.)	5000	5000	5000	5000	5000	5000	5000	5000
Integrated towing hitch receiver and wiring harness with 4- and 7-pin connectors ⁶⁰	S	S	S	S	S	S	S	S
TIRES								
Mud-and-Snow	S	S	S	S	S	S	S	—
All-terrain	—	—	—	—	—	—	—	S
SPARE								
Full-size, mounted under body	S	S	S	S	S	S	S	S
MILEAGE ESTIMATES (mpg city/highway/combined)⁶¹								
	17/21/18*	17/21/18*	17/20/18	17/20/18	17/20/18	17/21/18*	17/21/18*	17/20/18

*4x2 mileage estimates

See numbered footnotes in Disclosures section.

S = Standard O = Optional - = Not available

CARS BUILT FOR THE WAY YOU LIVE

At Toyota, we build cars for how you live. From building advanced safety features designed to help prevent crashes to driving cross-country to understand how we can make your driving experience better, our work starts with understanding your needs. Building cars for how you live also means thinking about tomorrow — from fuel efficiency and environmental innovations, to things beyond cars, like a bicycle that you can control with your mind. And because what we learn building cars can help improve lives in other places, we do things like help communities rebuild their homes quickly after a disaster and work with soup kitchens to help them serve more people faster. Toyota. Built for how you live. Together we are going places.

WARRANTIES

Every Toyota Car, Truck and SUV is built to exceptional standards. And that's not idle boasting. We back it up with these Limited Warranty Coverages:

Basic: 36 months/36,000 miles (all components other than normal wear and maintenance items).

Powertrain: 60 months/60,000 miles (engine, transmission/transaxle, drive system, seatbelts and airbags).

Rust-Through: 60 months/unlimited miles (corrosion perforation of sheet metal).

Emissions: Coverages vary under Federal and California regulations. Refer to applicable *Warranty and Maintenance Guide* for details.

Accessories: For Genuine Toyota Accessories purchased at the time of the new vehicle purchase, the Toyota Accessory Warranty coverage is in effect for 36 months/36,000 miles from the vehicle's in-service date, which is the same coverage as the Toyota New Vehicle Limited Warranty.

For Genuine Toyota Accessories purchased after the new vehicle purchase the coverage is 12 months, regardless of mileage, from the date the accessory was installed on the vehicle, or the remainder of any applicable new vehicle warranty, whichever provides greater coverage.

You may be eligible for transportation assistance if it's necessary that your vehicle be kept overnight for repairs covered under warranty. Please see your authorized Toyota dealership for further details.

For complete details about Toyota's warranties, please visit www.toyota.com, refer to the applicable *Warranty and Maintenance Guide* or see your Toyota dealer.



For Toyota Mobility program details, go to www.toyota.com/mobility or call the Toyota Customer Assistance Center at 1-800-331-4331.



DISCLOSURES (continued)

1. Toyota strives to build vehicles to match customer interest and thus they typically are built with popular options and option packages. Not all options/packages are available separately and some may not be available in all regions of the country. See toyota.com for information about options/packages commonly available in your area. If you would prefer a vehicle without any or with different options, contact your dealer to check for current availability or the possibility of placing a special order. Color(s) depicted may vary based on multiple factors, including ambient lighting and the format in which it is being viewed (e.g., computer, mobile device or print).

2. Cargo and load capacity limited by weight and distribution. Always properly secure cargo and cargo area. 3. 17-in. off-road performance tires are often expected to experience greater tire wear than conventional tires. Tire life may be substantially less than mileage expectancy, depending upon tires used and driving conditions. 4. Android is a trademark of Google, LLC. 5. Vehicle user interface is a product of Google and its terms and privacy statement apply. To use Android Auto on your car display, you'll need an Android Auto compatible vehicle or aftermarket stereo, an Android phone running Android 5.0 (Lollipop) or higher, and the Android Auto app. Google, Android and Android Auto are trademarks of Google LLC. 6. Apps and services are subject to change at any time without notice. Data charges may apply. Apple CarPlay® functionality requires a compatible iPhone® connected with an approved data cable into the USB media port. Apple CarPlay® is a registered trademark of Apple Inc. 7. Amazon, Alexa and all related logos are trademarks of Amazon.com, Inc. or its affiliates. Requires adequate signal strength and smartphone. See applicable application for details. Not all Amazon Alexa functionality is available for in-vehicle use and some functions depend on smart home technology. Download of the Toyota+Alexa app is required to begin in-vehicle use of Alexa. Data charges may apply. Apps, prices and services subject to change at any time without notice. To learn more, go to <https://www.toyota.com/audio-multimedia>. To learn more about Toyota's data collection, use, sharing and retention, please visit <https://www.toyota.com/privacysvcs/>. 8. May not be compatible with all mobile phones, MP3/WMA players and like models. 9. Advanced voice recognition capabilities vary by head unit. 10. The Bluetooth® word mark and logos are registered trademarks owned by Bluetooth SIG, Inc., and any use of such marks by Toyota is under license. A compatible Bluetooth®-enabled phone must first be paired. Phone performance depends on software, coverage and carrier. 11. SiriusXM® audio services require a subscription sold separately by Sirius XM Radio Inc. If you decide to continue service after your trial, the subscription plan you choose will automatically renew thereafter and you will be charged according to your chosen payment method at then-current rates. Fees and taxes apply. To cancel, you must call SiriusXM at 1-866-635-2349. See SiriusXM Customer Agreement for complete terms at www.siriusxm.com. All fees and programming subject to change. Not all vehicles or devices are capable of receiving all services offered by SiriusXM. Current information and features may not be available in all locations, or on all receivers. ©2019 Sirius XM Radio Inc. SiriusXM and all related marks and logos are trademarks of Sirius XM Radio Inc. 12. SiriusXM All Access trial length and service availability may vary by model, model year or trim. 13. Connected Services depends on an operative telematics device, a cellular connection, navigation map data, GPS signal strength and other factors outside of Toyota's control, all of which can limit system functionality or availability, including access to response center and emergency support. Service may vary by vehicle and region. Apps and services subject to change at any time without notice. See toyota.com/connected-services for details. To learn about Toyota's data collection, use, sharing and retention, please visit <https://www.toyota.com/privacysvcs/>. Stolen vehicle police report required to use Stolen Vehicle Locator. 14. Toyota Safety Connect® depends on an operative telematics device, a cellular connection, navigation map data and GPS signal strength and other factors outside of Toyota's control, all of which can limit system functionality or availability, including access to response center and emergency support. Stolen vehicle police report required to use Stolen Vehicle Locator. Registration required. Service subject to change at any time without notice. Terms and conditions of subscription service agreement apply. Service may vary by vehicle and region. See usage precautions and service limitations in *Owner's Manual* and at toyota.com/connected-services/ for additional details. To learn about Toyota's data collection, use, sharing and retention, please visit <https://www.toyota.com/privacysvcs/>. 15. The Safety Connect® trial period is at no extra cost and begins on the original date of purchase or lease of a new vehicle. After the trial period expires, enrollment in paid subscription is required to access the service. 16. Eligible vehicle and wireless service required. Coverage and service not available everywhere. Valid in the contiguous U.S. and Alaska. Do not drive distracted. Go to att.com/toyota for terms and conditions. 17. The Wi-Fi Connect trial period is at no extra cost and begins on the date of activation. After the trial period expires, enrollment in a paid subscription is required to access the service. Terms and conditions apply. 18. HD Radio™ Technology manufactured under license from iBiquity Digital Corporation U.S. and Foreign Patents. HD Radio™ and the HD, HD Radio, and "Arc" logos are proprietary trademarks of iBiquity Digital Corp. 19. Genuine Toyota Paint Protection Film by 3M™ is designed for specific sections of the vehicle most prone to chipping and may vary depending on vehicle model. Select applications may require an additional charge. Toyota Genuine Accessory Warranty only applies when installation is performed by a trained Toyota-approved installer. See Toyota dealer for details. 20. The universal tablet holder is intended for passengers only. Drivers should always be sure to obey traffic regulations and maintain awareness of the road and traffic conditions at all times. Use of aftermarket accessories may pose an increased risk of injury to occupants in the event of an accident. Tablet sold separately. 21. Dynamic Navigation depends on an operative telematics device, a cellular connection, navigation map data and GPS signal strength, and other factors outside of Toyota's control, which can limit system functionality or availability. Services not available in every city or roadway. Use common sense when relying on information provided. Service may vary by vehicle and region. Registration is required. Terms and conditions of subscription services agreement apply. See *Owner's Manual* and <https://toyota.com/connected-services> for additional limitations and details. To learn about Toyota's data collection, use, sharing and retention, please visit <https://www.toyota.com/privacysvcs/>. 22. The Dynamic Navigation three-year trial begins the earlier of when the vehicle hits 100 miles or a year after the multimedia system manufacture date, regardless of when you purchase or lease the vehicle. Terms and conditions of subscription service agreement apply. 23. Dynamic voice recognition capabilities vary by head unit. 24. Information provided is based on the last time data was collected from the vehicle and may not be up to date. Service Connect depends on an operative telematics device, a cellular connection, navigation map data, GPS signal strength and other factors outside of Toyota's control, which can limit functionality or availability. Service may vary by vehicle and region. Registration required. Service subject to change at any time without notice. Terms and conditions of subscription service agreement apply. See usage precautions and service limitations in *Owner's Manual* and at toyota.com/connected-services for additional details. To learn about Toyota's data collection, use, sharing and retention, please visit <https://www.toyota.com/privacysvcs/>. 25. The Service Connect trial period is at no extra cost and begins on the original date of purchase or lease of a new vehicle. After the respective trial period expires, enrollment in paid subscription is required to access the service. 26. Use only if aware of circumstances surrounding vehicle and it is legal and safe to do so (e.g., do not remotely start engine if vehicle is in an enclosed space or vehicle is occupied by a child). Remote Connect depends on an operative telematics device, a cellular connection, GPS signal strength and other factors outside of Toyota's control, which can limit system functionality and availability. Service may vary by vehicle and region. Registration and app download required. Terms and conditions of subscription service agreement apply. Data charges may apply. Remote start/stop not available on manual-transmission-equipped vehicles. Services subject to change at any time without notice. See usage precautions and service limitations in *Owner's Manual* and at <https://www.toyota.com/connected-services> for additional details. To learn about Toyota's data collection, use, sharing and retention, please visit <https://www.toyota.com/privacysvcs/>. 27. The Remote Connect trial period is at no extra cost and begins on the original date of purchase or lease of a new vehicle. After the trial period expires, enrollment in a paid subscription is required to access the service. Terms and conditions apply. 28. Destination Assist depends on an operative telematics device, a cellular connection, navigation map data and GPS signal strength and other factors outside of Toyota's control, which can limit system ability functionality or availability. Use common sense when relying on this information. Service may vary by vehicle and region. Registration required. Services subject to change at any time without notice. Terms and conditions of subscription services agreement apply. See *Owner's Manual* and toyota.com/connected-services for additional limitations and details. To learn about Toyota's data collection, use, sharing and retention, please visit <https://www.toyota.com/privacysvcs/>. 29. The Destination Assist trial period is at no extra cost and begins on the original date of purchase or lease of a new vehicle. After the trial period expires, enrollment in a paid subscription is required to access the service. 30. JBL® and Clari-Fi® are registered trademarks of Harman International Industries, Inc. 31. SoffTex® is a registered trademark of Toyota Motor Sales, U.S.A., Inc. 32. Dynamic Radar Cruise Control is designed to assist the driver and is not a substitute for safe and attentive driving practices. System effectiveness is dependent on many factors including road, weather and traffic conditions. DRCC not available on manual transmissions. See *Owner's Manual* for additional limitations and details. 33. The Smart Key System may interfere with some pacemakers or cardiac defibrillators. If you have one of these medical devices, please talk to your doctor to see if you should deactivate this system. 34. The backup camera does not provide a comprehensive view of the rear area of the vehicle and you should also look around the vehicle, using mirrors to confirm rearward clearance. Environmental conditions may limit effectiveness and view may become obscured. See *Owner's Manual* for additional limitations and details. 35. Crawl Control is designed for driving on difficult terrain at low speeds and assists the driver by controlling acceleration and braking, allowing the driver to focus on steering. The 4Runner is designed to meet off-road driving requirements, but off-roading is inherently dangerous. Always wear seatbelts. See *Owner's Manual* for additional limitations and details. 36. HomeLink® and the HomeLink® house icon are registered trademarks of Gentex Corporation. 37. This floor mat/floor liner was designed specifically for use in your model and model year vehicle and SHOULD NOT be used in any other vehicle. To avoid potential interference with pedal operation, each mat/liner must be secured with its fasteners. Do not install a floor mat/floor liner on top of an existing floor mat/floor liner. 38. Rated for 12 volts. See *Owner's Manual* for additional limitations and details. 39. Do not exceed 120V. See *Owner's Manual* for additional limitations and details. 40. Toyota Safety Sense™ effectiveness is dependent on many factors including road, weather and vehicle conditions. Drivers are responsible for their own safe driving. Always pay attention to your surroundings and drive safely. See *Owner's Manual* for additional limitations and details. 41. The Pre-Collision System (PCS) with Pedestrian Detection (PD) is designed to determine if impact is imminent and help reduce impact speed and damage in certain frontal collisions involving a vehicle or a pedestrian. PCS w/PD is not a substitute for safe and attentive driving. System effectiveness depends on many factors, such as speed, size and position of pedestrian and weather, light and road conditions. See *Owner's*

DISCLOSURES

Manual for additional limitations and details. **42.** Lane Departure Alert is designed to read visible lane markers under certain conditions, and provide visual and audible alerts when lane departure is detected. It is not a collision-avoidance system or a substitute for safe and attentive driving. Effectiveness is dependent on many factors including road, weather and vehicle conditions. See *Owner's Manual* for additional limitations and details. **43.** Automatic High Beams operate at speeds above 25 mph. Factors such as a dirty windshield, weather, lighting and terrain limit effectiveness, requiring the driver to manually operate the high beams. See *Owner's Manual* for additional limitations and details. **44.** Vehicle Stability Control is an electronic system designed to help the driver maintain vehicle control under adverse conditions. It is not a substitute for safe and attentive driving practices. Factors including speed, road conditions, weather and driver steering input can all affect whether VSC will be effective in preventing a loss of control. See *Owner's Manual* for additional limitations and details. **45.** Brake Assist is designed to help the driver take advantage of ABS and is not a substitute for safe driving practices. Braking effectiveness also depends on proper vehicle maintenance, tire and road conditions. See *Owner's Manual* for additional limitations and details. **46.** Smart Stop Technology® operates only in the event of certain contemporaneous brake and accelerator pedal applications. When engaged, the system will reduce power to help the brakes bring the vehicle to a stop. Factors including speed, road conditions and driver input can all impact stopping distance. Smart Stop Technology® is not a substitute for safe and attentive driving and does not guarantee instant stopping. See *Owner's Manual* for additional limitations and details. **47.** Airbag systems are Supplemental Restraint Systems and are designed to inflate only under certain conditions and in certain types of severe collisions. To decrease the risk of injury from an inflating airbag, always wear seatbelts and sit upright in the middle of the seat as far back as possible. Do not put objects in front of an airbag or around the seatback. Do not use a rearward-facing child seat in any front passenger seat. See *Owner's Manual* for additional limitations and details. **48.** Active front headrests can help reduce the extent of whiplash in certain types of rear-end collisions. **49.** The Tire Pressure Monitor System alerts the driver when tire pressure is critically low. For optimal tire wear and performance, tire pressure should be checked regularly with a gauge; do not rely solely on the monitor system. See *Owner's Manual* for additional limitations and details. **50.** Front and rear parking assist sonar is designed to warn drivers of potential front and rear collisions at speeds of 6 mph or less. Certain vehicle and environmental factors, including an object's shape and composition, may affect the ability of the front and rear parking assist sonar to detect it. Always look around outside the vehicle and use mirrors to confirm clearance. See *Owner's Manual* for additional limitations and details. **51.** The engine immobilizer is a state-of-the-art anti-theft system that is initiated when you insert your key into the ignition switch or bring a Smart Key fob into the vehicle. The engine will only start if the code in the transponder chip inside the key/fob matches the code in the vehicle's immobilizer. The transponder chip is embedded in the key/fob and can be costly to replace. If you lose a key or fob, your Toyota dealer can help or go to www.aloa.org to find a qualified locksmith in your area who can perform high-security key service. **52.** ToyotaCare plan covers normal factory scheduled service for 2 years or 25K miles, whichever comes first. Certain models require a different maintenance schedule as described in their Maintenance Guide. See Toyota dealer for details and exclusions. Valid only in the continental U.S. and Alaska. **53.** Roadside Assistance coverage is 2 years unlimited mileage. Does not include parts and fluids, except emergency fuel delivery. See Toyota Dealer for details and exclusions. Valid only in the continental U.S. and Alaska. **54.** Auto LSD is an electronic, brake-actuated limited-slip differential that automatically activates when VSC is disengaged at low speeds. See *Owner's Manual* for additional limitations and details. **55.** Torsen® is a registered trademark of Zexel Torsen, Inc. **56.** Hill Start Assist Control is designed to help minimize backward rolling on steep ascents. It is not a substitute for safe driving judgment and practices. Factors including speed, grade, surface conditions and driver input can all affect whether HAC will be effective in preventing a loss of control. See *Owner's Manual* for additional limitations and details. **57.** Downhill Assist Control is designed to help driver maintain vehicle control and speed on steep, downhill descents and is not a substitute for safe driving judgment and practices. Factors including speed, grade, surface conditions and driver input can affect the DAC's ability to prevent loss of control. See *Owner's Manual* for additional limitations and details. **58.** FOX® is a registered trademark of FOX Factory, Inc. (©FOX Factory, Inc.) **59.** Cargo and load capacity limited by weight and distribution. Always properly secure cargo and cargo area. **60.** Before towing, confirm your vehicle and trailer are compatible, hooked up and loaded properly and that you have any necessary additional equipment. Do not exceed any Weight Ratings and follow all instructions in your *Owner's Manual*. The maximum you can tow depends on base curb weight plus the total weight of any cargo, occupants, and added vehicle equipment. "Added vehicle equipment" includes additional standard/optional equipment and accessories added by the manufacturer, dealers, and/or vehicle owners. The only way to be certain of your vehicle's exact curb weight is to weigh your vehicle without passengers or cargo. **61.** 2019 EPA-estimated mileage. Actual mileage will vary. **62.** The Toyota 4Runner is designed to meet most off-road driving requirements, but off-roading is inherently dangerous and may result in vehicle damage. Toyota encourages responsible operation to help protect you, your vehicle and the environment. Seatbelts should be worn at all times. Do not allow passengers to ride in cargo area. **63.** iPhone® is a registered trademark of Apple Inc. All rights reserved. **64.** Do not overload your vehicle. See *Owner's Manual* for weight limits and restrictions. Always properly secure cargo and cargo area. **65.** Vehicle shown with some accessories not available from Toyota. **66.** Apps, prices and services vary by phone carrier and are subject to change at any time without notice. Subject to smartphone connectivity and capability. Data charges may apply. Skills and services subject to change at any time without notice. **67.** Not all smartwatches are compatible with Remote Connect: Samsung Gear, Fitbit, Garmin are not compatible. **68.** Password required to start/stop engine/lock/unlock door. When using Alexa to start/stop engine/lock/unlock door, do so only if aware of circumstances surrounding vehicle and it is legal and safe to do so. Do not remotely start engine if vehicle is in an enclosed space or vehicle is occupied by a child. **69.** Requires adequate cellular coverage and GPS signal strength. May not work in all areas. Service may vary by vehicle and region. See Toyota Dealer for details and exclusions. **70.** Rear-seat leg rest may not fully raise based on height of passenger. Do not allow passengers to sit in a seat that has been fully or severely reclined while driving. This feature is intended for use only when the vehicle is parked. While the vehicle is being driven, all vehicle occupants should have the seatback upright, sit well back in the seat and properly wear the seatbelts provided. In the event of a collision, the more the seat is reclined, the greater the risk of death or personal injury. See *Owner's Manual* for additional limitations and details. **71.** Nitto® is a registered trademark of Nitto Tire U.S.A. Inc. **72.** Terra Grappler® is a registered trademark of Toyo Tire & Rubber Co., Ltd. Terra Grappler® is a registered trademark of Toyo Tire & Rubber Co., Ltd. **73.** Extra-cost color.

Toyota strives to build vehicles to match customer interest and thus they typically are built with popular options and option packages. Not all options/packages are available separately and some may not be available in all regions of the country. See toyota.com for information about options/packages commonly available in your area. If you would prefer a vehicle without any or with different options, contact your dealer to check for current availability or the possibility of placing a special order.

Toyota 4Runner is designed to meet most off-road driving requirements. Abusive use may result in bodily harm or damage. Toyota encourages responsible operation to protect you, your vehicle and the environment. Seatbelts should be worn at all times.

Please do not allow passengers to ride in the cargo area. Towing hitch receiver/ball mount kits are not intended to provide crash protection.

For details on vehicle specifications, standard features and available equipment in your area, contact your Toyota dealer. A vehicle with particular equipment may not be available at the dealership. Ask your Toyota dealer to help locate a specifically equipped vehicle.

All information presented herein is based on data available at the time of posting, is subject to change without notice and pertains specifically to mainland U.S.A. vehicles only. Vehicles shown may be prototypes and/or shown with options. Actual models may vary.