

2020 Sienna



 Let's  
Go  
Places

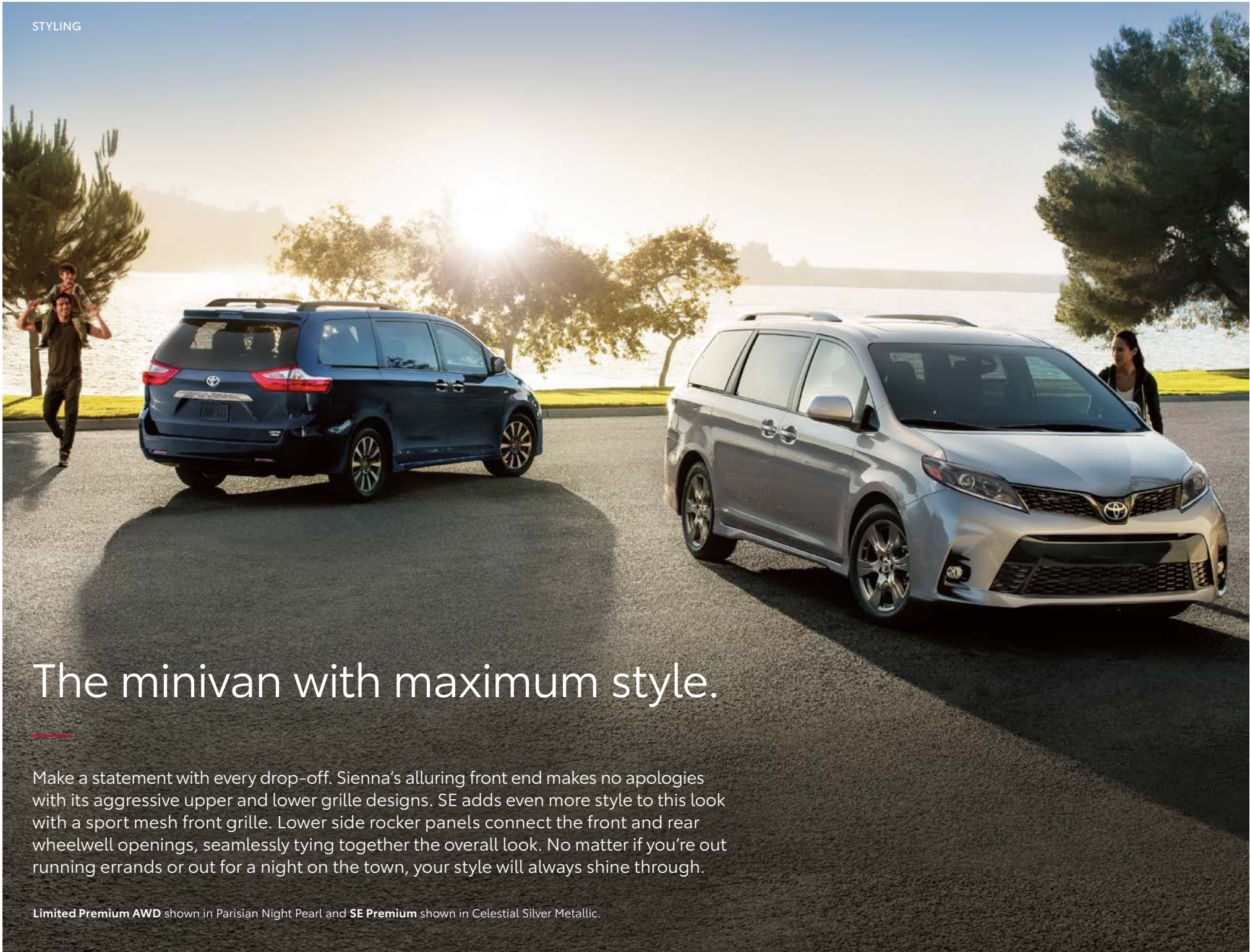


# Life meets style.

Good looks, advanced tech and a spacious interior — all under the same roof in the 2020 Toyota Sienna. SE's available Nightshade Edition Package gives Sienna unexpected charisma. With standard Toyota Safety Sense™ P (TSS-P)<sup>34</sup> and available All-Wheel Drive (AWD), the 2020 Sienna is the minivan everyone in the family can agree on.

Limited Premium AWD shown in Parisian Night Pearl.

See numbered footnotes in Disclosures section.



## The minivan with maximum style.

Make a statement with every drop-off. Sienna's alluring front end makes no apologies with its aggressive upper and lower grille designs. SE adds even more style to this look with a sport mesh front grille. Lower side rocker panels connect the front and rear wheelwell openings, seamlessly tying together the overall look. No matter if you're out running errands or out for a night on the town, your style will always shine through.

Limited Premium AWD shown in Parisian Night Pearl and SE Premium shown in Celestial Silver Metallic.

ALL-WHEEL DRIVE

# Helps take weather out of the equation.

---

Sometimes we need to go places when weather conditions are far from ideal, which is why the 2020 Sienna offers the added security of available All-Wheel Drive (AWD). By utilizing AWD with active torque control, this advanced system processes information sent from various sensors, then transmits the right amount of torque to the front and rear wheels, helping you maintain traction.

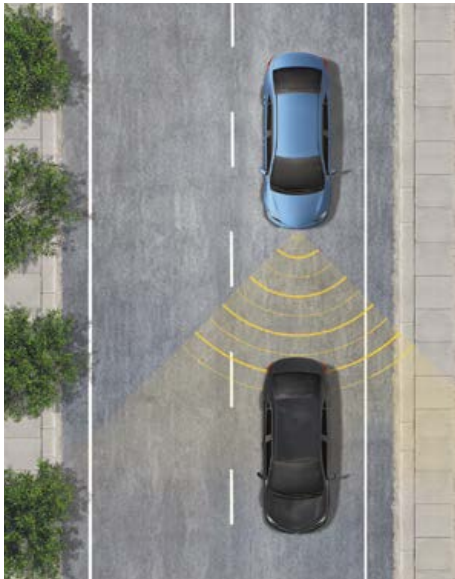


SE Premium AWD shown in Celestial Silver Metallic.



# Designed for safety.

Toyota Safety Sense™ (TSS)<sup>34</sup> is a bundle of active safety features on many new Toyota vehicles at no additional cost. These innovative features were designed to help protect you and your passengers from harm.



## DYNAMIC RADAR CRUISE CONTROL (DRCC)<sup>39</sup>

Intended for highway use and similar to “constant speed” cruise control, Dynamic Radar Cruise Control (DRCC) lets you drive at a preset speed. DRCC uses vehicle-to-vehicle distance control, which is designed to adjust your speed, to help you maintain a preset distance from vehicles ahead of you that are driving at a slower speed. DRCC uses a front-grille-mounted radar and an in-vehicle camera designed to detect vehicles and their distance. If a driver is traveling slower than you, or within your preset range, DRCC is designed to automatically slow your vehicle down without deactivating cruise control. If DRCC determines you need to slow down more, an audio and visual alert notifies you and brakes are applied. When there’s no longer a vehicle driving slower than your preset speed in front of you, DRCC will then accelerate to the preset speed.



## LANE DEPARTURE ALERT WITH STEERING ASSIST (LDA w/SA)<sup>37</sup>

Under certain circumstances, Lane Departure Alert with Steering Assist (LDA w/SA) is designed to help detect lane departure on roads with visible lane markings. LDA only activates when you’re traveling at a speed of 32 mph or faster. When you hear and see the alert, after carefully checking the road around you, safely direct your vehicle back to the center of your lane. In addition, if the system senses that you’re unintentionally drifting, it may automatically make small corrective steering inputs to help keep your vehicle in its lane.



## AUTOMATIC HIGH BEAMS (AHB)<sup>38</sup>

The Automatic High Beams (AHB) feature is a safety system designed to help you see more clearly at night — without distracting other drivers. Designed to activate at speeds above 25 mph, AHB relies on an in-vehicle camera to help detect the headlights of oncoming vehicles and taillights of preceding vehicles, then automatically toggles between high and low beams accordingly to provide the appropriate amount of light. By using high beams more frequently, the system may allow for earlier detection of pedestrians and obstacles.



## PRE-COLLISION SYSTEM<sup>35</sup> WITH PEDESTRIAN DETECTION<sup>36</sup> (PCS w/PD)

Sienna’s Pre-Collision System with Pedestrian Detection (PCS w/PD) helps keep the road safe by detecting a vehicle or a pedestrian in certain situations. By combining millimeter-wave radar with a camera capable of shape recognition, the system provides an audio/visual alert, warning you of a possible collision under certain circumstances. If you don’t react, the system is designed for automatic braking support to help mitigate the potential for a collision.

# The family hauler that really hauls.

---

Engineered to be fun for the whole family. Sienna's lightweight, rigid body is aerodynamically optimized for responsive handling. A 296-hp V6 direct-injection engine helps deliver remarkable power and efficiency. Plus, SE utilizes sport-tuned suspension and Electric Power Steering (EPS) for a precise feel. It's performance-oriented engineering that everyone can appreciate.



## **SPORT INSTRUMENT CLUSTER**

Get more information from a quick glance with Sienna's stylish gauge cluster. Customize the large, easy-to-read standard 4.2-in. color Multi-Information Display (MID) to show what you need most. For those with a sportier side, Sienna SE offers racing-inspired white-faced gauges.



## **19-IN. ALLOY WHEELS**

Sienna SE comes standard with 19-in. 6-spoke gunmetal-finish alloy wheels fitted with low-profile tires for head-turning style.

PERFORMANCE



**SPORT-TUNED SUSPENSION  
AND STEERING**

Command every corner. Sienna SE rewards you with dynamic handling and responsive steering, thanks to its sport-tuned suspension and sport-calibrated Electric Power Steering (EPS). It's designed to get the most out of every drive.

SE Premium shown in Celestial Silver Metallic.

# A welcoming space for the entire family.

---

Fall in love with Sienna's inviting soft-touch seating and available premium contrast stitching, but don't forget about all the technology. A cockpit-like driver's area with a standard 7-in. touch-screen and easy-to-use climate controls helps make every trip a little more enjoyable.



## CLIMATE CONTROL

Sienna features three separate climate control zones, a digital display, plus easy-to-use controls. This system is also smart enough to automatically adjust all three zones at once, so no one will be too hot or cold.



## SOFT-TOUCH/CONTRAST STITCHING

Complementing Sienna's premium feel is available contrast stitching. This subtle design touch adds visual interest and contemporary style. It's one of many quality details that helps Sienna's interior stand out.



## AVAILABLE LEATHER SEATING SURFACES

Sienna keeps your family rolling in style. Available leather seating surfaces bring comfort to any outing, and with contrast stitching throughout the cabin, Sienna is dressed for any occasion. We've also added soft-touch materials throughout Sienna's cabin to help keep big hands and little hands happy. Things like the dash and vent controls feel luxurious to the touch, adding to Sienna's refined feel.



PREMIUM INTERIOR



Limited Premium AWD interior shown in Chestnut with white accent stitching.

# All for fun. Fun for all.

Inside Sienna, connecting to your tech is simple. Its standard 7-in. touch-screen display offers easy access to your favorite apps<sup>54</sup> and music. Sienna also comes with Apple CarPlay<sup>®9</sup> support, so you can pair your compatible iPhone<sup>®55</sup> to get directions, make calls, send messages, and listen to your own playlist — all while maintaining focus on your drive. With Amazon Alexa<sup>56</sup> compatibility, simply ask to play music, hear the news, check weather and more.



## JBL<sup>®</sup> WITH CLARI-FI<sup>®24</sup>

Your group sing-alongs just got better. Sienna's available Premium Audio and JBL<sup>®</sup> w/Clari-Fi<sup>®</sup> uses ten speakers, including a subwoofer and amplifier, to enhance the sound quality and hit every high note — even if you can't.



## DYNAMIC NAVIGATION<sup>20</sup>

All this fun comes with a confident drive, courtesy of the available Dynamic Navigation. Just set your destination, and the system will give you the most up-to-date directions, so you'll never miss a practice or playdate again.



## WI-FI CONNECT POWERED BY VERIZON<sup>15</sup>

Everyone can stay connected with Sienna's available Wi-Fi Connect Powered by Verizon. The advanced system supports up to five devices, making Sienna the hottest spot on the road.

PREMIUM INTERIOR



SE Premium interior shown in Black with white accent stitching.

Apple CarPlay<sup>®</sup> compatibility shown. See numbered footnotes in Disclosures section.

# We've taken an active interest in your family.

Many new Toyotas are equipped with the Star Safety System,<sup>TM</sup> a suite of six safety features designed to help keep you out of harm's way. The system includes Enhanced Vehicle Stability Control (VSC),<sup>31</sup> Traction Control (TRAC), Anti-lock Brake System (ABS), Electronic Brake-force Distribution (EBD), Brake Assist (BA)<sup>32</sup> and Smart Stop Technology<sup>®</sup> (SST).<sup>33</sup>



## **BLIND SPOT MONITOR (BSM)<sup>3</sup> WITH REAR CROSS-TRAFFIC ALERT (RCTA)<sup>4</sup>**

Using radar technology, the available Blind Spot Monitor (BSM) is designed to alert you when a vehicle enters a blind spot on either side. Available Rear Cross-Traffic Alert (RCTA) works similarly by providing you with audible and visual indicators to warn you of approaching vehicles.

## **BIRD'S EYE VIEW CAMERA<sup>25</sup>**

Sienna's available Bird's Eye View Camera with Perimeter Scan uses front-, side- and rear-mounted cameras to display a panoramic overhead view. It helps you see more of your surroundings, so you can drive with confidence.

## **BACKUP CAMERA<sup>5</sup>**

Park and reverse with ease, thanks to Sienna's standard backup camera. The available Bird's Eye View Camera<sup>25</sup> with Perimeter Scan helps you see nearby obstacles, thanks to a 360-degree overhead view. All of this helps give you peace of mind for a more peaceful drive.



ADVANCED TECHNOLOGIES



**FRONT AND REAR PARKING ASSIST SONAR<sup>43</sup>**

Sienna is available with parking assist sonars that help you quickly determine the distance between your Sienna and other vehicles with audible warning signals and a color graphic that changes as you draw closer to the obstacle.

Limited Premium AWD shown in Parisian Night Pearl.

See numbered footnotes in Disclosures section.

# It's like a family-friendly five-star resort.

Sienna has the tech and convenience to make your active lifestyle easier and more fun. We took everything you and your kids wanted in an interior and put it all together in a premium, easy-to-access package. Whether you want to listen to a favorite soundtrack, watch a family-friendly movie or just fit more stuff, Sienna is ready to go. Welcome to the ultimate family room.



## DUAL-VIEW BLU-RAY DISC™ ENTERTAINMENT CENTER<sup>26</sup>

The available Dual-View Entertainment Center has Blu-ray capability and includes a 16.4-in. color display, SD and HDMI inputs, two 120V AC power outlets and a remote with two wireless headphones.<sup>27</sup> Its unique screen can display one wide-angle image or two smaller images from separate sources at the same time.



## 5 USB PORTS<sup>10</sup>

The power to do more. Now everyone can stay in charge thanks to Sienna's five standard USB ports spread across three rows of seats. With so many options, Sienna will put an end to the family power struggle.



## DRIVER EASY SPEAK

Yes, those in the rear seats can hear you now. Sienna's available Driver Easy Speak feature has a built-in microphone up front that picks up your voice and transmits it to rear-seat passengers through the back speakers. To turn it on, just press the button on the 7-in. touch-screen display.

COMFORT AND CONVENIENCE



Limited Premium AWD interior shown in Chestnut with white accent stitching.

# Spoil them with safety.

Our commitment to your family's well-being doesn't end with the advanced safety features found in the Star Safety System™. Should a collision occur, Sienna's comprehensive set of eight standard airbags<sup>40</sup> is designed to help protect occupants in all rows of seating. Sienna also offers a multitude of features, like available rain-sensing windshield wipers, that you might not associate with safety but that can help ensure your overall peace of mind.



## 8 STANDARD AIRBAGS<sup>40</sup>

An Advanced Airbag System helps protect you and your family with driver and front passenger dual stage airbags, driver and front passenger seat-mounted side airbags, a driver knee airbag, a front passenger seat-cushion airbag and Roll-sensing Side Curtain Airbags (RSCA) for all rows.

## SAFETY CONNECT<sup>®13</sup>

Via Toyota's 24/7 call center, standard Safety Connect<sup>®</sup> offers subscribers helpful features such as Emergency Assistance, Stolen Vehicle Locator, Roadside Assistance<sup>47</sup> and Automatic Collision Notification. Safety Connect<sup>®</sup> also offers embedded cellular and GPS technology.

## ACTIVE HEADRESTS<sup>41</sup>

A smart way to care for you and yours. In the event of an impact, Sienna's headrests will move up and forward — providing head support for the front-seat passengers. These active headrests are designed to reduce the motion that causes whiplash, while increasing your peace of mind.

## STAR SAFETY SYSTEM™

Sienna comes standard with the Star Safety System™, a suite of six safety features that includes Enhanced Vehicle Stability Control (VSC),<sup>31</sup> Traction Control (TRAC), Anti-lock Brake System (ABS), Electronic Brake-force Distribution (EBD), Brake Assist (BA)<sup>32</sup> and Smart Stop Technology<sup>®</sup> (SST).<sup>33</sup>

## 4 LATCH LOCATIONS

LATCH (Lower Anchors and Tethers for CHildren) provides an added measure of safety for smaller family members. Sienna offers four LATCH locations, including lower anchors and tethers on outboard second- and third-row seats.







**SIDE-IMPACT DOOR BEAMS**

Within each of Sienna's four doors are steel beams designed to help protect the occupants in the event of a side-impact collision.

SE Premium AWD shown in Celestial Silver Metallic.

# Team. Squad. Crew. Bring whomever you like.

Parent. Coach. Bandleader. You play a lot of roles, so we made sure you have choices like second-row seats that tip up and slide forward, and an available power third-row seat to make loading up all your passengers and cargo easier. Plus, there is plenty of head room, leg room and hip room. So now, even if the kids outgrow their car seats, or the college band reunites, Sienna will be right there with you.



## TIP-UP AND LONG-SLIDE SECOND ROW

Even when you're seated in the third row, you'll get first-class treatment. Sienna's second-row seat cushions tip up and the seats slide forward to make access to the third-row seats a breeze.



## SEATS UP TO EIGHT

You don't have to be a star to have an entourage. Spacious seating for up to eight ensures no one's fun takes a back seat. When the eighth seat is not in use, you can easily store it securely in the cargo area cubby. Sienna gives you enough space to pack 'em all up and move 'em out, where everyone's comfort is a priority.



## LOUNGE SEATING<sup>28</sup>

Treat your second-row passengers to the comforts of home with available lounge seating. These comfy captain's chairs are equipped with adjustable ottomans and armrests.

COMFORT



Limited Premium AWD interior shown in Chestnut with white accent stitching.

Cargo and load capacity limited by weight and distribution. Always properly secure cargo and cargo area.

PERFORMANCE



Limited Premium AWD shown in Parisian Night Pearl.

NIGHTSHADE

# Style that doesn't settle.

---

Front to back, Sienna SE's available Nightshade Edition Package expresses your personality in every detail. With its black sport mesh front grille and aggressive black wheels, door handles, mirror caps and spoiler, you're sure to get noticed, whether you're pulling up to the drop-off lane or driving to date night. The Nightshade Edition Package is available in Super White, Celestial Silver Metallic, Midnight Black Metallic or Salsa Red Pearl.



SE Premium AWD shown in Midnight Black Metallic with available Nightshade Edition Package.

NIGHTSHADE



SE Premium AWD shown in Midnight Black Metallic with available Nightshade Edition Package.

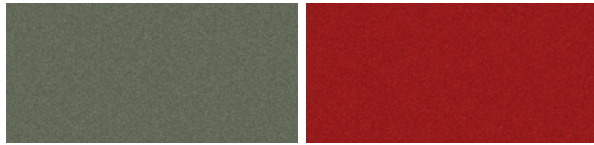


# Color



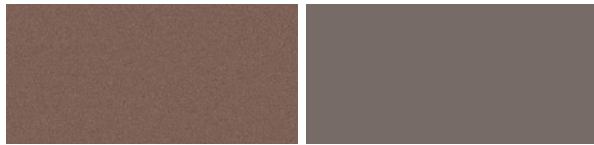
Midnight Black Metallic

Parisian Night Pearl



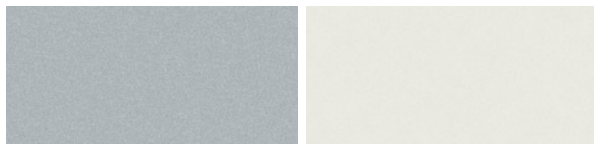
Alumina Jade Metallic

Salsa Red Pearl



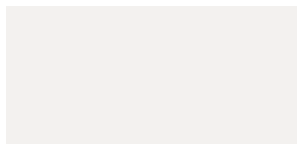
Toasted Walnut Pearl

Predawn Gray Mica



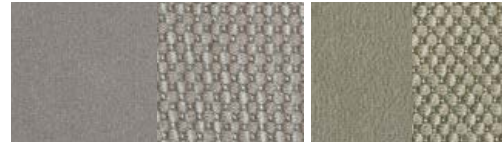
Celestial Silver Metallic

Blizzard Pearl<sup>57</sup>



Super White

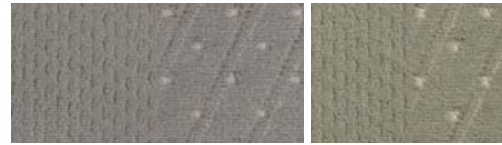
# Trim



Also available in

L fabric shown in Ash

Dark Bisque fabric



Also available in

LE fabric shown in Ash

Dark Bisque fabric



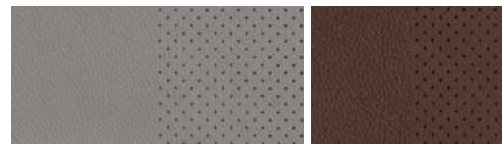
SE perforated leather shown in Black



Also available in

XLE leather shown in Ash

Dark Bisque leather



Also available in

Limited perforated leather shown in Ash

Chestnut leather

# Wheels



L and LE 17-in. 5-spoke alloy wheel



SE 19-in. and SE AWD 18-in. 6-spoke gunmetal-finish alloy wheel



SE Nightshade 19-in. and SE Nightshade AWD 18-in. 6-spoke black alloy wheel



XLE 17-in. 7-spoke machined alloy wheel



LE AWD, XLE AWD and Limited 18-in. 10-spoke machined alloy wheel

\*Not all colors and trims available on all model grades. See dealer for details. See numbered footnotes in Disclosures section.

## SIENNA MODELS



# L

### Exterior Features

- 17-in. 5-spoke alloy wheels with P235/60R17 tires
- Projector-beam halogen headlights with auto on/off feature
- Black power outside mirrors with integrated blind spot mirrors<sup>2</sup>
- Windshield wiper de-icer
- Color-keyed rear spoiler with LED center high-mount stop light and integrated concealed intermittent rear wiper
- Roof-mounted shark-fin antenna

### Interior Features

- Seating for seven with second-row captain's chairs
- Audio — includes 7-in. touch-screen
- Hands-free phone capability and music streaming<sup>12</sup> via *Bluetooth*<sup>®12</sup> wireless technology
- Apple CarPlay<sup>®9</sup> compatibility
- Siri<sup>®</sup> Eyes Free<sup>8</sup>
- Five USB ports<sup>10</sup>
- Soft-touch materials
- Three-zone automatic climate control with air filter, individual temperature settings for driver, front passenger and rear-seat passengers, and separate rear digital control panel
- Integrated backup camera<sup>5</sup>
- 6-way adjustable driver's seat
- 4-way adjustable front passenger seat
- 60/40 Split & Stow 3rd Row<sup>®</sup> seat
- 4.2-in. color TFT Multi-Information Display (MID)
- Four LATCH locations

### Safety Features

- Toyota Safety Sense™ P (TSS-P)<sup>34</sup> includes:
  - Pre-Collision System<sup>35</sup> with Pedestrian Detection<sup>36</sup> (PCS w/PD)
  - Lane Departure Alert with Steering Assist (LDA w/SA)<sup>37</sup>
  - Automatic High Beams (AHB)<sup>38</sup>
  - Dynamic Radar Cruise Control (DRCC)<sup>39</sup>



# LE

Adds to or replaces features offered on L

### Exterior Features

- Available 18-in. 10-spoke machined alloy wheels with P235/55RF18 tires (AWD only)
- Color-keyed heated power outside mirrors with integrated blind spot mirrors<sup>2</sup>
- Dual power sliding side doors with jam protection
- Black roof rails
- Privacy glass on rear windows

### Interior Features

- Seating for up to eight
- Easy-clean fabric-trimmed seats
- Audio Plus — includes 7-in. touch-screen
- HD Radio<sup>™17</sup> SiriusXM<sup>®18</sup>
- 8-way power-adjustable driver's seat
- 40/20/40 second-row seat with tip-up and long-slide feature, and stowable center seat
- Second- and third-row sunshades

### Options and Packages

- LE Preferred Package includes:
  - Blind Spot Monitor (BSM)<sup>3</sup> with Rear Cross-Traffic Alert (RCTA)<sup>4</sup>
  - Smart Key System<sup>29</sup> with Push Button Start
- All-Wheel Drive (AWD) with active torque control



# SE

Adds to or replaces features offered on LE

### Exterior Features

- 19-in. 6-spoke gunmetal-finish alloy wheels with P235/50R19 tires
- Available 18-in. 6-spoke gunmetal-finish alloy wheels with P235/55RF18 tires (AWD only)
- Projector-beam halogen headlights with smoked chrome trim, auto on/off feature and LED Daytime Running Lights (DRL)
- Sport mesh front grille
- Available color-keyed heated power outside mirrors with blind spot warning indicators<sup>3</sup>
- Chrome-accented outside door handles
- Fog lights
- Power liftgate with jam protection

### Interior Features

- Seating for up to eight
- Perforated leather-trimmed and multi-stage heated front seats
- Sport instrumentation with 4.2-in. color TFT Multi-Information Display (MID)

### Options and Packages

- SE Premium Package includes:
  - Blind Spot Monitor (BSM)<sup>3</sup> with Rear Cross-Traffic Alert (RCTA)<sup>4</sup>
  - Rear parking assist sonar<sup>43</sup>
  - Power tilt/slide moonroof
  - Smart Key System<sup>29</sup> with Push Button Start
  - Driver Easy Speak
  - Premium Audio with Dynamic Navigation<sup>20</sup> and JBL<sup>®</sup> w/Clari-Fi<sup>®24</sup> — includes ten speakers and 7-in. touch-screen
  - Dual-View Blu-ray Disc™ Entertainment Center<sup>26</sup> with 16.4-in. display, HDMI port and two 120V AC power outlets
- SE Preferred Package
- Nightshade Edition Package includes:
  - 19-in. 6-spoke gloss-black alloy wheels with P235/50R19 tires and black lug nuts
  - Available 18-in. 6-spoke gloss-black alloy wheels with P235/55RF18 tires and black lug nuts (AWD only)
  - Black exterior accents including sport mesh front grille, outside mirror caps, outside door handles, Sienna logo liftgate license garnish and rear spoiler
  - Black Toyota emblem and grade badge
- All-Wheel Drive (AWD) with active torque control



## SIENNA MODELS



# XLE

Adds to or replaces features offered on SE

### Exterior Features

---

- 17-in. 7-spoke machined alloy wheels with P235/60R17 tires
- Available 18-in. 10-spoke machined alloy wheels with P235/55RF18 tires (AWD only)
- Color-keyed heated power outside mirrors with blind spot warning indicators<sup>3</sup>
- Chrome-accented outside door handles with touch-sensor lock/unlock feature

### Interior Features

---

- Seating for up to eight
- Leather-trimmed and multi-stage heated front seats
- Leatherette-trimmed 60/40 Split & Stow 3rd Row<sup>®</sup> seat
- Leather-trimmed tilt/telescopic steering wheel with audio, Bluetooth<sup>®</sup><sup>12</sup> and voice-command controls
- Smart Key System<sup>29</sup> with Push Button Start

### Options and Packages

---

- XLE Premium Package includes:
  - Seating for up to eight
  - Rear parking assist sonar<sup>43</sup>
  - Dual-View Blu-ray Disc™ Entertainment Center<sup>26</sup> with 16.4-in. display, HDMI port and two 120V AC power outlets
  - Premium Audio with Dynamic Navigation<sup>20</sup> — includes 7-in. touch-screen
  - Driver Easy Speak
- All-Wheel Drive (AWD) with active torque control



# Limited

Adds to or replaces features offered on XLE

### Exterior Features

---

- 18-in. 10-spoke machined alloy wheels with P235/55R18 tires
- Available 18-in. 10-spoke machined alloy wheels with P235/55RF18 tires (AWD only)
- Projector-beam halogen headlights with auto on/off feature and LED Daytime Running Lights (DRL)
- Color-keyed heated power outside mirrors with blind spot warning indicators<sup>3</sup> and memory feature
- Dual moonroof with front power tilt/slide and power rear slide

### Interior Features

---

- Seating for up to seven with premium leather-trimmed second-row captain's chairs and available lounge seating<sup>28</sup>
- Power third-row seat (FWD only)
- Premium leather-trimmed and multi-stage heated front seats
- Premium Audio with Dynamic Navigation<sup>20</sup> and JBL<sup>®</sup> w/Clari-Fi<sup>®</sup><sup>24</sup> — includes ten speakers and 7-in. touch-screen
- Heated leather-trimmed tilt/telescopic steering wheel with audio, Bluetooth<sup>®</sup><sup>12</sup> and voice-command controls
- Front and rear parking assist sonar<sup>43</sup>

### Options and Packages

---

- Limited Premium Package includes:
  - High Intensity Discharge (HID) headlights with manual level control, auto on/off feature and LED Daytime Running Lights (DRL)
  - Dual-View Blu-ray Disc™ Entertainment Center<sup>26</sup> with 16.4-in. display, HDMI port and two 120V AC power outlets
  - Bird's Eye View Camera<sup>25</sup> with Perimeter Scan, overhead 360-degree view in Drive and Reverse, and curb view
  - Rain-sensing windshield wipers
- All-Wheel Drive (AWD) with active torque control

# Freedom to do more.

---

Sienna offers the Auto Access Seat as the perfect solution for anyone who needs a little extra help getting in and out of the vehicle. It meets all applicable safety standards and is universally suited for all ISOFIX/LATCH child seats. Factory-installed and specifically designed for Sienna, the power-rotating lift-up seat rotates 90 degrees. It also extends from the vehicle and lowers to a convenient transfer height, making for easy entry and exit. Since it's a factory-installed feature, the seat matches the interior of your Sienna and is covered under the same comprehensive three-year factory warranty as the rest of the vehicle. It's time to do even more.





**XLE with Auto Access Seat** shown in Alumina Jade Metallic with available Premium Package.



## LE with Auto Access Seat

Adds to or replaces features offered on L

### Exterior Features

---

- 17-in. 5-spoke alloy wheels with P235/60R17 tires
- Color-keyed heated power outside mirrors with integrated blind spot mirrors<sup>2</sup>
- Dual power sliding side doors and power liftgate with jam protection
- Black roof rails
- Privacy glass on rear windows

### Interior Features

---

- Seating for up to seven
- Power-rotating lift-up seat, second-row passenger side
- Audio Plus — includes 7-in. touch-screen
- HD Radio<sup>TM17</sup> SiriusXM<sup>®18</sup>
- 8-way power-adjustable driver's seat
- Second- and third-row sunshades



## XLE with Auto Access Seat

Adds to or replaces features offered on LE with Auto Access Seat

### Exterior Features

---

- 17-in. 7-spoke machined alloy wheels with P235/60R17 tires
- Color-keyed heated power outside mirrors with blind spot warning indicators<sup>3</sup>
- Chrome-accented outside door handles with touch-sensor lock/unlock feature

### Interior Features

---

- Seating for up to seven
- Power-rotating lift-up seat, second-row passenger side
- Leather-trimmed and multi-stage heated front seats
- Leatherette-trimmed 60/40 Split & Stow 3rd Row<sup>®</sup> seat
- Leather-trimmed tilt/telescopic steering wheel with audio, Bluetooth<sup>®12</sup> and voice-command controls
- Smart Key System<sup>29</sup> with Push Button Start

### Options and Packages

---

- XLE Premium Package includes:
  - Rear parking assist sonar<sup>43</sup>
  - Dual-View Blu-ray Disc<sup>™</sup> Entertainment Center<sup>26</sup> with 16.4-in. display, HDMI port and two 120V AC power outlets
  - Premium Audio with Dynamic Navigation<sup>20</sup> — includes 7-in. touch-screen
  - Driver Easy Speak

MOBILITY



XLE with Auto Access Seat shown in Alumina Jade Metallic with available Premium Package.

See numbered footnotes in Disclosures section.

ACCESSORIES

Because no two families are alike. A wide range of Genuine Toyota Accessories is available to help you make your Sienna your own. Considering how appealing Sienna is to begin with, these quality products will be like icing on the cake. Some accessories may not be available in all regions of the country. See your Toyota dealer for details.

Alloy wheel locks

All-weather floor liners<sup>58</sup>

Ashtray cup

Ball mount<sup>49</sup>

Cargo liner

Cargo net — envelope<sup>48</sup>

Cargo organizer<sup>48</sup>

Cargo tote<sup>48</sup>

Carpet floor mats<sup>58</sup>

Door edge guards

Doorsill protectors

Emergency assistance kit

Lower door molding

Mudguards

Paint protection film<sup>59</sup>

Remote Engine Starter<sup>60</sup>

Roof rail cross bars<sup>61</sup>

Vehicle Intrusion Protection (VIP) Security System

Wireless headphones<sup>27</sup>



Cargo net — envelope<sup>48</sup>



Cargo organizer<sup>48</sup>



Cargo tote<sup>48</sup>



Door edge guards



Roof rail cross bars<sup>61</sup>



Doorsill protectors



Cargo liner



All-weather floor liners<sup>58</sup>

FEATURES<sup>1</sup>

EXTERIOR	L	LE	SE	SE PREMIUM	XLE	XLE PREMIUM	LIMITED	LIMITED PREMIUM	LE with Auto Access Seat	XLE with Auto Access Seat
Projector-beam halogen headlights with auto on/off feature and Daytime Running Lights (DRL)	S	S	—	—	S	S	—	—	S	S
Projector-beam halogen headlights with smoked chrome sport trim, auto on/off feature and LED Daytime Running Lights (DRL)	—	—	S	S	—	—	—	—	—	—
Projector-beam halogen headlights with auto on/off feature and LED Daytime Running Lights (DRL)	—	—	—	—	—	—	S	—	—	—
High Intensity Discharge (HID) headlights with manual level control, auto on/off feature and LED Daytime Running Lights (DRL)	—	—	—	—	—	—	—	S	—	—
Integrated wide-angle fog lights	—	—	S	S	S	S	S	S	—	S
LED taillights and stop lights with smoked sport trim	—	—	S	S	—	—	—	—	—	—
Side rocker panels	S	S	—	—	S	S	S	S	S	S
Color-keyed front and rear underbody spoilers and side rocker panels	—	—	S	S	—	—	—	—	—	—
Sport mesh front grille with smoked chrome surround	—	—	S	S	—	—	—	—	—	—
Black sport mesh front grille	—	—	P	P	—	—	—	—	—	—
Black power outside mirrors with integrated blind spot mirrors <sup>2</sup>	S	—	—	—	—	—	—	—	—	—
Color-keyed heated power outside mirrors with integrated blind spot mirrors <sup>2</sup>	—	S	S	—	—	—	—	—	S	—
Color-keyed heated power outside mirrors with blind spot warning indicators <sup>3</sup> and Rear Cross-Traffic Alert (RCTA) <sup>4</sup>	—	P	P	S	S	S	—	—	—	S
Black heated power outside mirrors with integrated blind spot mirrors	—	—	P	P	—	—	—	—	—	—
Black heated power outside mirrors with blind spot warning indicators and Rear Cross-Traffic Alert (RCTA) <sup>4</sup>	—	—	P	P	—	—	—	—	—	—
Color-keyed heated power auto-dimming outside mirrors with turn signal and blind spot warning indicators <sup>3</sup> Rear Cross-Traffic Alert (RCTA) <sup>4</sup> puddle lights and power-folding, reverse tilt-down and memory features	—	—	—	—	—	—	S	S	—	—
Dual sliding side doors	S	—	—	—	—	—	—	—	—	—
Dual power sliding side doors with jam protection	—	S	—	—	—	—	—	—	—	—
Dual power sliding side doors and power liftgate with jam protection	—	—	S	S	S	S	S	S	S	S
Color-keyed outside door handles	—	S	—	—	—	—	—	—	S	—
Chrome-accented outside door handles	—	—	S	—	—	—	—	—	—	—
Chrome-accented outside door handles with touch-sensor lock/unlock feature	—	—	—	S	S	S	S	S	—	S
Black outside door handles	—	—	P	—	—	—	—	—	—	—
Black with chrome-accented outside door handles with touch-sensor lock/unlock feature	—	—	—	P	—	—	—	—	—	—
Black Sienna logo liftgate license garnish	S	—	P	P	—	—	—	—	—	—
Color-keyed Sienna logo liftgate license garnish	—	S	S	S	S	S	—	—	S	S
Chrome-accented Sienna logo liftgate license garnish	—	—	—	—	—	—	S	S	—	—
Power tilt/slide moonroof	—	—	O/P	S	S	S	—	—	—	S
Dual moonroof with front power tilt/slide and power rear slide	—	—	—	—	—	—	S	S	—	—
17-in. 5-spoke alloy wheels with P235/60R17 tires (FWD models only)	S	S	—	—	—	—	—	—	S	—
17-in. 7-spoke machined alloy wheels with P235/60R17 tires (FWD models only)	—	—	—	—	S	S	—	—	—	S
18-in. 10-spoke machined alloy wheels with P235/55R18 tires (FWD models only)	—	—	—	—	—	—	S	S	—	—
18-in. 10-spoke machined alloy wheels with P235/55RF18 tires (AWD models only)	—	S	—	—	S	S	S	S	—	—
18-in. 6-spoke gunmetal-finish alloy wheels with P235/55RF18 tires (AWD models only)	—	—	S	S	—	—	—	—	—	—
19-in. 6-spoke gunmetal-finish alloy wheels with P235/50R19 tires (FWD models only)	—	—	S	S	—	—	—	—	—	—
18-in. 6-spoke gloss black alloy wheels with P235/55RF18 tires and black wheel lug nuts (AWD models only)	—	—	P	P	—	—	—	—	—	—
19-in. 6-spoke gloss black alloy wheels with P235/50R19 tires and black wheel lug nuts (FWD models only)	—	—	P	P	—	—	—	—	—	—
Washer-linked variable intermittent windshield wipers	S	S	S	S	S	S	S	—	S	S
Rain-sensing washer-linked variable intermittent windshield wipers	—	—	—	—	—	—	—	S	—	—
Windshield wiper de-icer	S	S	S	S	S	S	S	S	S	S
Privacy glass on rear windows	—	S	S	S	S	S	S	S	S	S

See numbered footnotes in Disclosures section.

S = Standard O = Optional — = Not available P = Feature is available as part of an option package.

FEATURES<sup>1</sup> (continued)

	L	LE	SE	SE PREMIUM	XLE	XLE PREMIUM	LIMITED	LIMITED PREMIUM	LE with Auto Access Seat	XLE with Auto Access Seat
<b>EXTERIOR (continued)</b>										
Black roof rails	—	S	S	S	S	S	S	S	S	S
Rear bumper protector	—	S	S	S	S	S	S	S	S	S
Color-keyed rear spoiler with LED center high-mount stop light and integrated concealed intermittent rear wiper	S	S	S	S	S	S	S	S	S	S
Black rear spoiler with LED center high-mount stop light and integrated concealed intermittent rear wiper	—	—	P	P	—	—	—	—	—	—
In-glass AM/FM antenna	S	S	S	S	S	S	S	S	S	S
Roof-mounted shark-fin antenna	S	S	S	S	S	S	S	S	S	S
Black Toyota emblem and grade badge (FWD models only)	—	—	P	P	—	—	—	—	—	—
Black Toyota emblem, grade badge and drivetrain badge (AWD models only)	—	—	P	P	—	—	—	—	—	—
<b>INTERIOR</b>										
Three-zone automatic climate control with air filter, individual temperature settings for driver, front passenger and rear-seat passengers, and separate rear digital control panel	S	S	S	S	S	S	S	S	S	S
Integrated backup camera <sup>5</sup>	S	S	S	S	S	S	S	S	S	S
Audio — includes 7-in. touch-screen, AM/FM, Scout® GPS Link <sup>6</sup> compatible with up to 3-year trial <sup>7</sup> , Siri® Eyes Free <sup>8</sup> , Apple CarPlay <sup>9</sup> compatible, USB media port <sup>10</sup> five USB charge ports <sup>10</sup> hands-free phone capability, advanced voice recognition <sup>11</sup> and music streaming <sup>12</sup> via Bluetooth <sup>®12</sup> wireless technology. Toyota Connected Services — Safety Connect <sup>®13</sup> with 3-year trial <sup>14</sup> and Wi-Fi Connect Powered by Verizon <sup>15</sup> with up to 2 GB within 6-month trial. <sup>16</sup> See <a href="http://toyota.com/audiomultimedia">toyota.com/audiomultimedia</a> for details.	S	—	—	—	—	—	—	—	—	—
Audio Plus — includes 7-in. touch-screen, AM/FM, CD player, USB media port <sup>10</sup> five USB charge ports <sup>10</sup> advanced voice recognition <sup>11</sup> hands-free phone capability and music streaming <sup>12</sup> via Bluetooth <sup>®12</sup> wireless technology, Scout® GPS Link <sup>6</sup> compatible with up to 3-year trial <sup>7</sup> , Siri® Eyes Free <sup>8</sup> , Apple CarPlay <sup>9</sup> compatible, HD Radio <sup>™17</sup> and SiriusXM <sup>®18</sup> with 3-month All Access trial <sup>19</sup> Toyota Connected Services — Safety Connect <sup>®13</sup> with 3-year trial <sup>14</sup> and Wi-Fi Connect Powered by Verizon <sup>15</sup> with up to 2 GB within 6-month trial. <sup>16</sup> See <a href="http://toyota.com/audiomultimedia">toyota.com/audiomultimedia</a> for details.	—	S	S	—	S	—	—	—	S	S
Premium Audio with Dynamic Navigation <sup>20</sup> — includes 7-in. touch-screen, AM/FM/HD Radio <sup>™17</sup> CD player, USB media port <sup>10</sup> five USB charge ports <sup>10</sup> Dynamic Navigation <sup>20</sup> with up to 3-year trial <sup>21</sup> Dynamic POI Search, Dynamic Voice Recognition, hands-free phone capability and music streaming <sup>12</sup> via Bluetooth <sup>®12</sup> wireless technology, Siri® Eyes Free <sup>8</sup> , Apple CarPlay <sup>9</sup> compatible, SiriusXM <sup>®18</sup> with 3-month All Access trial <sup>19</sup> Toyota Connected Services — Safety Connect <sup>®13</sup> with 3-year trial <sup>14</sup> Wi-Fi Connect Powered by Verizon <sup>15</sup> with up to 2 GB within 6-month trial <sup>16</sup> and Destination Assist Connect <sup>22</sup> with 6-month trial. <sup>23</sup> See <a href="http://toyota.com/audiomultimedia">toyota.com/audiomultimedia</a> for details.	—	—	—	—	P	S	—	—	—	P
Premium Audio with Dynamic Navigation <sup>20</sup> and JBL® w/Clari-Fi <sup>®24</sup> — includes 10 speakers including subwoofer and amplifier, 7-in. touch-screen, AM/FM/HD Radio <sup>™17</sup> CD player, USB media port <sup>10</sup> five USB charge ports <sup>10</sup> Dynamic Navigation <sup>20</sup> with up to 3-year trial <sup>21</sup> Dynamic POI Search, Dynamic Voice Recognition, hands-free phone capability and music streaming <sup>12</sup> via Bluetooth <sup>®12</sup> wireless technology, Siri® Eyes Free <sup>8</sup> , Apple CarPlay <sup>9</sup> compatible, SiriusXM <sup>®18</sup> with 3-month All Access trial <sup>19</sup> Toyota Connected Services — Safety Connect <sup>®13</sup> with 3-year trial <sup>14</sup> Wi-Fi Connect Powered by Verizon <sup>15</sup> with up to 2 GB within 6-month trial <sup>16</sup> and Destination Assist Connect <sup>22</sup> with 6-month trial. <sup>23</sup> See <a href="http://toyota.com/audiomultimedia">toyota.com/audiomultimedia</a> for details.	—	—	P	S	—	—	S	S	—	—
Bird's Eye View Camera <sup>25</sup> with Perimeter Scan, overhead 360-degree view in Drive and Reverse, and curb view	—	—	—	—	—	—	—	S	—	—
Driver Easy Speak — utilizes microphone in overhead console to amplify the driver's voice and broadcast it through rear speakers	—	—	P	S	P	S	S	S	—	P
Dual-View Blu-ray Disc™ Entertainment Center <sup>26</sup> with 16.4-in. display, SD card and HDMI inputs, two 120V AC power outlets, remote and two wireless headphones <sup>27</sup>	—	—	—	S	—	S	—	S	—	P
Fabric-trimmed front seats; 6-way adjustable driver's seat; 4-way adjustable front passenger seat	S	—	—	—	—	—	—	—	—	—
Easy-clean fabric-trimmed front seats with seatback pockets; 8-way power-adjustable driver's seat with power lumbar support; 4-way adjustable front passenger seat	—	S	—	—	—	—	—	—	S	—
Perforated leather-trimmed and multi-stage heated front seats and seatback pockets; 8-way power-adjustable driver's seat with power lumbar support; 4-way adjustable front passenger seat	—	—	S	S	—	—	—	—	—	—

See numbered footnotes in Disclosures section.

S = Standard O = Optional — = Not available P = Feature is available as part of an option package.



FEATURES<sup>1</sup> (continued)

INTERIOR (continued)	L	LE	SE	SE PREMIUM	XLE	XLE PREMIUM	LIMITED	LIMITED PREMIUM	LE with Auto Access Seat	XLE with Auto Access Seat
Leather-trimmed and multi-stage heated front seats with seatback pockets; 8-way power-adjustable driver's seat with power lumbar support; 4-way power-adjustable front passenger seat	—	—	—	—	S	S	—	—	—	S
Premium leather-trimmed and multi-stage heated front seats with seatback pockets; 8-way power-adjustable driver's seat with driver memory function and power lumbar support; 4-way power-adjustable front passenger seat	—	—	—	—	—	—	S	S	—	—
7-passenger seating with removable perforated fabric-trimmed second-row captain's chairs and tip-up and long-slide feature	S	—	—	—	—	—	—	—	—	—
7-passenger seating with removable easy-clean fabric-trimmed second-row captain's chairs and tip-up and long-slide feature on driver's side only	—	—	—	—	—	—	—	—	S	—
7-passenger seating with removable easy-clean fabric-trimmed second-row captain's chairs and tip-up and long-slide feature	—	S	—	—	—	—	—	—	—	—
8-passenger seating with removable easy-clean fabric-trimmed 40/20/40 second-row seat, tip-up and long-slide feature and stowable center seat (FWD models only)	—	S	—	—	—	—	—	—	—	—
8-passenger seating with removable perforated leather-trimmed 40/20/40 second-row seat, tip-up and long-slide feature and stowable center seat (FWD models only)	—	—	S	S	—	—	—	—	—	—
8-passenger seating with removable leather-trimmed 40/20/40 second-row seat, tip-up and long-slide feature and stowable center seat (FWD models only)	—	—	—	—	S	S	—	—	—	—
7-passenger seating with removable perforated leather-trimmed second-row captain's chairs with long-slide feature (AWD models only)	—	—	S	S	—	—	—	—	—	—
7-passenger seating with removable leather-trimmed second-row captain's chairs with long-slide feature (AWD models only)	—	—	—	—	S	S	—	—	—	—
7-passenger seating with removable leather-trimmed second-row captain's chairs and tip-up and long-slide feature on driver's side only	—	—	—	—	—	—	—	—	—	S
7-passenger seating with removable premium leather-trimmed second-row lounge seat <sup>28</sup> captain's chairs with long-slide feature (FWD models only)	—	—	—	—	—	—	S	S	—	—
7-passenger seating with removable premium leather-trimmed second-row captain's chairs with long-slide feature (AWD models only)	—	—	—	—	—	—	S	S	—	—
Auto Access Seat	—	—	—	—	—	—	—	—	S	S
Fabric-trimmed 60/40 Split & Stow 3rd Row <sup>®</sup> seat with one-motion stow	S	S	—	—	—	—	—	—	S	—
Leatherette-trimmed 60/40 Split & Stow 3rd Row <sup>®</sup> seat with one-motion stow	—	—	S	S	S	S	—	—	—	S
Premium leatherette-trimmed 60/40 Split & Stow 3rd Row <sup>®</sup> seat (AWD models only)	—	—	—	—	—	—	O	O	—	—
Premium leatherette-trimmed power 60/40 Split & Stow 3rd Row <sup>®</sup> seat (FWD models only)	—	—	—	—	—	—	S	S	—	—
Cruise control	S	S	S	S	S	S	S	S	S	S
Tilt/telescopic steering wheel with audio, Bluetooth <sup>®12</sup> hands-free phone and voice-command controls	S	S	—	—	—	—	—	—	S	—
Leather-trimmed tilt/telescopic steering wheel with audio, Bluetooth <sup>®12</sup> hands-free phone and voice-command controls	—	—	S	S	S	S	—	—	—	S
Heated leather-trimmed tilt/telescopic steering wheel with audio, Bluetooth <sup>®12</sup> hands-free phone and voice-command controls	—	—	—	—	—	—	S	S	—	—
Speedometer, tachometer, coolant temperature and fuel gauges; 4.2-in. color TFT Multi-Information Display (MID) screen	S	S	—	—	S	S	S	S	S	S
Sport instrumentation with speedometer, tachometer, coolant temperature and fuel gauges; 4.2-in. color TFT Multi-Information Display (MID) screen	—	—	S	S	—	—	—	—	—	—
Remote keyless entry system with lock, two-stage unlock and panic functions	S	—	—	—	—	—	—	—	—	—
Remote keyless entry system with lock, two-stage unlock, panic and power sliding side door functions	—	S	—	—	—	—	—	—	—	—
Remote keyless entry system with lock, two-stage unlock, panic, power sliding side door and power liftgate functions	—	—	S	—	—	—	—	—	S	—
Smart Key System <sup>29</sup> on all doors with Push Button Start and remote illuminated entry	—	P	P	S	S	S	S	S	—	S
Power windows with auto up/down, jam protection in all positions and manual rear quarter windows	S	S	S	S	—	—	—	—	S	—
Power windows with auto up/down, jam protection in all positions and power rear quarter windows	—	—	—	—	S	S	S	S	—	S

See numbered footnotes in Disclosures section.

S = Standard O = Optional — = Not available P = Feature is available as part of an option package.

FEATURES<sup>1</sup> (continued)

	L	LE	SE	SE PREMIUM	XLE	XLE PREMIUM	LIMITED	LIMITED PREMIUM	LE with Auto Access Seat	XLE with Auto Access Seat
<b>INTERIOR (continued)</b>										
Heavy-duty rear window defogger with timer	S	S	S	S	S	S	S	S	S	S
Power door locks with shift-activated locking feature and anti-lockout feature	S	S	S	S	S	S	S	S	S	S
Manual second- and third-row sunshades	—	S	S	S	S	S	S	S	S	S
Auto-dimming rearview mirror with compass and HomeLink <sup>®30</sup> universal transceiver	—	S	S	S	S	S	S	S	S	S
Overhead console with maplights and dome lights, conversation mirror, sunglasses storage and Safety Connect <sup>®13</sup>	S	—	—	—	—	—	—	—	—	—
Overhead console with maplights and dome lights, side door controls, conversation mirror, sunglasses storage and Safety Connect <sup>®13</sup>	—	S	—	—	—	—	—	—	—	—
Overhead console with maplights and dome lights, side door and liftgate controls, conversation mirror, sunglasses storage and Safety Connect <sup>®13</sup>	—	—	S	S	S	S	S	S	S	S
Fixed center console with illuminated storage compartment, two front illuminated cup holders and two rear cup holders	—	S	S	S	—	—	—	—	S	—
Fixed center console with wood-grain-style accents, illuminated storage compartment, two front illuminated cup holders and two rear cup holders	—	—	—	—	S	S	S <sup>28</sup>	S <sup>28</sup>	—	S
Sliding center console with wood-grain-style accents, illuminated storage compartment, two front illuminated cup holders and two rear cup holders (FWD models only)	—	—	—	—	—	—	S	S	—	—
Upper glove compartment and lockable lower glove compartment	S	S	S	S	S	S	S	S	S	S
Cargo area storage compartment	S	S <sup>28</sup>	—	—	S <sup>28</sup>	S <sup>28</sup>	S	S	S	—
Cargo area storage compartment for second-row center seat	—	S	S	S	S <sup>29</sup>	S <sup>29</sup>	—	—	—	S
Three 12V auxiliary power outlets	S	S	S	S	S	S	S	S	S	S
Five USB ports <sup>10</sup>	S	—	—	—	—	—	—	—	—	—
Five USB ports <sup>10</sup> (second and third row for charging only)	—	S	S	S	S	S	S	S	S	S
Retractable assist grips at all outboard seating positions	S	S	S	S	S	S	S	S	S	S
Dual sun visors with illuminated vanity mirrors	S	S	S	S	S	S	S	S	S	S
Six cup holders (eight on 8-passenger models)	S	—	—	—	—	—	—	—	—	—
Ten cup holders (12 on 8-passenger models)	—	S	S	S	S	S	S	S	S	S
Front- and rear-door map pockets with bottle holders	S	S	S	S	S	S	S	S	S	S
<b>SAFETY AND CONVENIENCE</b>										
<b>STAR SAFETY SYSTEM™</b> Star Safety System™ — includes Enhanced Vehicle Stability Control (VSC), <sup>31</sup> Traction Control (TRAC), Anti-lock Brake System (ABS), Electronic Brake-force Distribution (EBD), Brake Assist (BA) <sup>32</sup> and Smart Stop Technology <sup>®</sup> (SST) <sup>33</sup> Smart Stop Technology <sup>®</sup> is designed to automatically reduce engine power when both brake and accelerator pedals are pressed at the same time under certain conditions, helping to bring the vehicle to a stop.	S	S	S	S	S	S	S	S	S	S
Toyota Safety Sense™ P (TSS-P) <sup>34</sup> — includes Pre-Collision System <sup>35</sup> with Pedestrian Detection <sup>36</sup> (PCS w/PD), Lane Departure Alert with Steering Assist (LDA w/SA), <sup>37</sup> Automatic High Beams (AHB) <sup>38</sup> and Dynamic Radar Cruise Control (DRCC) <sup>39</sup>	S	S	S	S	S	S	S	S	S	S
Driver front airbag and front passenger Advanced Airbag System <sup>40</sup>	S	S	S	S	S	S	S	S	S	S
Driver and front passenger seat-mounted side airbags, driver knee airbag, front passenger seat-cushion airbag and all-row Roll-sensing Side Curtain Airbags <sup>40</sup>	S	S	S	S	S	S	S	S	S	S
Driver and front passenger active headrests <sup>41</sup>	S	S	S	S	S	S	S	S	S	S
3-point seatbelts for all seating positions; driver-side Emergency Locking Retractor (ELR) and Automatic/Emergency Locking Retractors (ALR/ELR) on all passenger seatbelts	S	S	S	S	S	S	S	S	S	S
Adjustable seatbelt anchors on front and outboard second-row seats, and driver and front passenger seatbelt pretensioners with force limiters	S	S	S	S	S	S	S	S	S	S
Four LATCH (Lower Anchors and Tethers for CHildren) locations: includes lower anchors on outboard second-row seats, and passenger-side and center third-row seats	S	S	S	S	S	S	S	S	S	S
Child-protector rear door locks	S	S	S	S	S	S	S	S	S	S
High-tensile-strength steel body panels	S	S	S	S	S	S	S	S	S	S
Front and rear energy-absorbing crumple zones and side-impact door beams	S	S	S	S	S	S	S	S	S	S
Tire Pressure Monitor System (TPMS) <sup>42</sup>	S	S	S	S	S	S	S	S	S	S
Daytime Running Lights (DRL) with on/off feature	S	S	—	—	S	S	—	—	S	S
LED Daytime Running Lights (DRL) with on/off feature	—	—	S	S	—	—	S	S	—	—

See numbered footnotes in Disclosures section.

S = Standard O = Optional — = Not available P = Feature is available as part of an option package.

FEATURES<sup>1</sup> (continued)

**SAFETY AND CONVENIENCE (continued)**

	L	LE	SE	SE PREMIUM	XLE	XLE PREMIUM	LIMITED	LIMITED PREMIUM	LE with Auto Access Seat	XLE with Auto Access Seat
Safety Connect <sup>®13</sup> — includes Emergency Assistance, Stolen Vehicle Locator, Roadside Assistance and Automatic Collision Notification; with three-year trial subscription. <sup>14</sup> (Includes roof-mounted shark-fin antenna)	S	S	S	S	S	S	S	S	S	S
Rear parking assist sonar <sup>43</sup>	—	—	P	S	P	S	—	—	—	P
Front and rear parking assist sonar <sup>43</sup>	—	—	—	—	—	—	S	S	—	—
Blind Spot Monitor (BSM) <sup>3</sup> with Rear Cross-Traffic Alert (RCTA) <sup>4</sup>	—	P	P	S	S	S	S	S	—	S
Hill Start Assist Control (HAC) <sup>44</sup>	S	S	S	S	S	S	S	S	S	S
Engine immobilizer <sup>45</sup>	S	S	S	S	—	—	—	—	S	—
Anti-theft system with alarm and engine immobilizer <sup>45</sup>	—	—	—	—	S	S	S	S	—	S
ToyotaCare <sup>46</sup> featuring a no cost maintenance plan with roadside assistance <sup>47</sup>	S	S	S	S	S	S	S	S	S	S

See numbered footnotes in Disclosures section.

S = Standard   O = Optional   — = Not available   P = Feature is available as part of an option package.

SPECIFICATIONS

<b>MECHANICAL AND PERFORMANCE</b>	<b>L</b>	<b>LE</b>	<b>SE/ SE PREMIUM</b>	<b>XLE/ XLE PREMIUM</b>	<b>LIMITED/ LIMITED PREMIUM</b>	<b>LE with Auto Access Seat</b>	<b>XLE with Auto Access Seat</b>
<b>ENGINE</b>							
3.5-Liter V6 DOHC 24-Valve with Dual VVT-i; 296 hp @ 6600 rpm, 263 lb.-ft. @ 4700 rpm	Standard	Standard	Standard	Standard	Standard	Standard	Standard
<b>IGNITION</b>							
Electronic, with Toyota Direct Ignition (TDI)	Standard	Standard	Standard	Standard	Standard	Standard	Standard
<b>EMISSION RATING</b>							
Ultra Low Emission Vehicle III (ULEV-III)	Standard	Standard	Standard	Standard	Standard	Standard	Standard
<b>TRANSMISSION</b>							
Direct Shift-8AT Electronically Controlled automatic Transmission with intelligence (ECT-i)	Standard	Standard	Standard	Standard	Standard	Standard	Standard
<b>DRIVETRAIN</b>							
Front-Wheel Drive (FWD)	Standard	Standard	Standard	Standard	Standard	Standard	Standard
All-Wheel Drive (AWD) with active torque control	NA	Available	Available	Available	Available	NA	NA
<b>BODY CONSTRUCTION</b>							
Unitized body with anti-vibration sub-frame	Standard	Standard	Standard	Standard	Standard	Standard	Standard
<b>SUSPENSION</b>							
MacPherson strut front suspension with gas-filled shock absorbers and stabilizer bar; twist-beam rear suspension with coil springs (sport-tuned coil springs on SE model), gas-filled shock absorbers and stabilizer bar	Standard	Standard	Standard	Standard	Standard	Standard	Standard
<b>STEERING</b>							
Electric Power Steering (EPS)	Standard	Standard	NA	Standard	Standard	Standard	Standard
Sport-calibrated Electric Power Steering (EPS)	NA	NA	Standard	NA	NA	NA	NA
<b>TURNING CIRCLE DIAMETER curb to curb (ft.) (V6 FWD/V6 AWD)</b>							
	37.5/NA	37.5/37.4	37.5/37.5	37.5/37.4	37.5/37.4	36.9/NA	36.9/NA
<b>BRAKES</b>							
Power-assisted ventilated front and rear disc brakes with Star Safety System™	Standard	Standard	Standard	Standard	Standard	Standard	Standard
<b>EXTERIOR DIMENSIONS (in.)</b>							
Overall length/width	200.6/78.1	200.6/78.1	200.6/78.1	200.6/78.1	200.6/78.1	200.6/78.1	200.6/78.1
Overall height (V6 FWD/V6 AWD) unloaded without roof rails; unloaded with roof rails	68.9/NA; NA	NA; 70.7/71.3	NA; 70.5/68.7	NA; 70.7/71.3	NA; 70.7/71.3	NA; NA; NA	NA; NA; NA
Wheelbase	119.3	119.3	119.3	119.3	119.3	119.3	119.3
Track (front/rear)	67.7/67.7	67.7/67.7	67.7/67.7	67.7/67.7	67.7/67.7	67.7/67.7	67.7/67.7
Ground clearance (V6 FWD/V6 AWD)	6.5/NA	6.5/6.6	6.2/6.2	6.5/6.6	6.5/6.6	6.5/NA	6.5/NA
Coefficient of drag (Cd) (V6 FWD/V6 AWD)	.30/NA	.30/.31	.31/.31	.30/.31	.30/.31	0.30/NA	0.31/NA
<b>INTERIOR DIMENSIONS front/second-row/third-row seats (in.)</b>							
Head room with moonroof; with dual moonroof	41.0/39.7/38.3 NA; NA	41.0/39.7/38.3 NA; NA	41.0/39.7/38.3 39.1/39.7/38.3; NA	NA 39.1/39.7/38.3; NA	NA NA; 39.1/38.0/35.9	41.0/39.7/38.3 NA; NA	NA 39.1/39.7/38.3; NA
Shoulder room	65.0/64.6/61.1	65.0/64.6/61.1	65.0/64.6/61.1	65.0/64.6/61.1	65.0/64.6/61.1	65.0/64.6/61.1	65.0/64.6/61.1
Hip room	58.6/66.1/50.3	58.6/66.1/50.3	58.6/66.1/50.3	58.6/66.1/50.3	58.6/66.1/50.3	58.6/66.1/50.3	58.6/66.1/50.3
Leg room	40.5/37.6/36.3	40.5/37.6/36.3	40.5/37.6/36.3	40.5/37.6/36.3	40.5/37.6/36.3	40.5/37.6/36.3	40.5/37.6/36.3
<b>WEIGHTS/CAPACITIES</b>							
Curb weight (lb.) V6 FWD/V6 AWD	4430/NA	4505/4655	4605/4605	4590/4750	4615/4750	NA/NA	NA/NA
Cargo volume <sup>48</sup> (cu. ft.) behind front/second-row/third-row seats	150.0/87.1/39.1	150.0/87.1/39.1	150.0/87.1/39.1	150.0/87.1/39.1	150.0/87.1/39.1	150.0/87.1/39.1	150.0/87.1/39.1
Fuel tank (gal.)	20	20	20	20	20	20	20
Seating capacity (FWD/AWD)	7/NA	8/7	8/7	8/7	7/7	7/NA	7/NA

See numbered footnotes in Disclosures section.

SPECIFICATIONS (continued)

TOWING	L	LE	SE/ SE PREMIUM	XLE/ XLE PREMIUM	LIMITED/ LIMITED PREMIUM	LE with Auto Access Seat	XLE with Auto Access Seat
Tow Prep Package — includes engine oil cooler, plus heavy-duty radiator and fan; tow hitch and receiver not included V6 FWD/V6 AWD	Standard/NA	Standard/Standard	Standard/Standard	Standard/Standard	Standard/Standard	Standard/NA	Standard/NA
Towing capacity (lb.) <sup>49</sup> V6 FWD/V6 AWD	3500/NA	3500/3500	3500/3500	3500/3500	3500/3500	3500/NA	3500/NA
<b>TIRES</b>							
Spare — Temporary Run-flat tires	Standard NA	Standard Optional <sup>50</sup>	Standard Optional <sup>50</sup>	Standard Optional <sup>50</sup>	Standard Optional <sup>50</sup>	Standard NA	Standard NA
<b>MILEAGE ESTIMATES (city/highway)</b>							
V6 FWD <sup>51</sup> ; V6 AWD <sup>52</sup>	19/27; NA	19/27; 18/24	19/27; 18/24	19/27; 18/24	19/27; 18/24	19/27; NA	19/27; NA

PACKAGES/OPTIONS

**PACKAGES & OPTIONS**

Power tilt/slide moonroof with sunshade

**Entertainment Package** — includes Dual-View Blu-ray Disc™ Entertainment Center<sup>26</sup> with 16.4-in. display, SD card and HDMI inputs, two 120V AC power outlets, remote and two wireless headphones<sup>27</sup>

**LE**

**LE Preferred Package** — includes Blind Spot Monitor (BSM)<sup>3</sup> with Rear Cross-Traffic Alert (RCTA),<sup>4</sup> Smart Key System<sup>29</sup> on all doors with Push Button Start and remote illuminated entry

**SE**

**SE Preferred Package** — includes Blind Spot Monitor (BSM)<sup>3</sup> with Rear Cross-Traffic Alert (RCTA),<sup>4</sup> rear parking assist sonar, Smart Key System<sup>29</sup> on all doors with Push Button Start and remote illuminated entry, chrome-accented outside door handles with touch-sensor lock/unlock feature, power tilt/slide moonroof with sunshade, Driver Easy Speak and Premium Audio with Dynamic Navigation<sup>20</sup> and JBL® w/Clari-Fi<sup>24</sup> — includes 10 speakers including subwoofer and amplifier, 7-in. touch-screen, AM/FM/HD Radio,<sup>TM17</sup> CD player, USB media port,<sup>10</sup> five USB charge ports,<sup>10</sup> Dynamic Navigation<sup>20</sup> with up to 3-year trial,<sup>21</sup> Dynamic POI Search, Dynamic Voice Recognition, hands-free phone capability and music streaming<sup>12</sup> via Bluetooth<sup>®12</sup> wireless technology, Siri<sup>®</sup> Eyes Free<sup>8</sup> Apple CarPlay<sup>®9</sup> compatible, SiriusXM<sup>®18</sup> with 3-month All Access trial,<sup>19</sup> Toyota Connected Services — Safety Connect<sup>®13</sup> with 3-year trial,<sup>14</sup> Wi-Fi Connect Powered by Verizon<sup>15</sup> with up to 2 GB within 6-month trial<sup>16</sup> and Destination Assist Connect<sup>22</sup> with 6-month trial.<sup>23</sup> See [toyota.com/audiomultimedia](http://toyota.com/audiomultimedia) for details.

**SE Premium Package** — includes Blind Spot Monitor (BSM)<sup>3</sup> with Rear Cross-Traffic Alert (RCTA),<sup>4</sup> rear parking assist sonar,<sup>54</sup> Smart Key System<sup>29</sup> on all doors with Push Button Start and remote illuminated entry, chrome-accented outside door handles with touch-sensor lock/unlock feature, power tilt/slide moonroof with sunshade, Driver Easy Speak; Dual-View Blu-ray Disc™ Entertainment Center<sup>26</sup> with 16.4-in. display, SD card and HDMI inputs, two 120V AC power outlets, remote and two wireless headphones;<sup>27</sup> and Premium Audio with Dynamic Navigation<sup>20</sup> and JBL® w/Clari-Fi<sup>24</sup> — includes 10 speakers including subwoofer and amplifier, 7-in. touch-screen, AM/FM/HD Radio,<sup>TM17</sup> CD player, USB media port,<sup>10</sup> five USB charge ports,<sup>10</sup> Dynamic Navigation<sup>20</sup> with up to 3-year trial,<sup>21</sup> Dynamic POI Search, Dynamic Voice Recognition, hands-free phone capability and music streaming<sup>12</sup> via Bluetooth<sup>®12</sup> wireless technology, Siri<sup>®</sup> Eyes Free<sup>8</sup> Apple CarPlay<sup>®9</sup> compatible, SiriusXM<sup>®18</sup> with 3-month All Access trial,<sup>19</sup> Toyota Connected Services — Safety Connect<sup>®13</sup> with 3-year trial,<sup>14</sup> Wi-Fi Connect Powered by Verizon<sup>15</sup> with up to 2 GB within 6-month trial<sup>16</sup> and Destination Assist Connect<sup>22</sup> with 6-month trial.<sup>23</sup> See [toyota.com/audiomultimedia](http://toyota.com/audiomultimedia) for details.

**Nightshade Edition Package** — includes black sport mesh front grille; black door handles, wheels, and spoiler; black outside mirror caps; black Toyota emblem and grade badging

**XLE**

**XLE Navigation Package** — includes rear parking assist sonar,<sup>54</sup> Driver Easy Speak and Premium Audio with Dynamic Navigation<sup>20</sup> — includes 7-in. touch-screen, AM/FM/HD Radio,<sup>TM17</sup> CD player, USB media port,<sup>10</sup> five USB charge ports,<sup>10</sup> Dynamic Navigation<sup>20</sup> with up to 3-year trial,<sup>21</sup> Dynamic POI Search, Dynamic Voice Recognition, hands-free phone capability and music streaming<sup>12</sup> via Bluetooth<sup>®12</sup> wireless technology, Siri<sup>®</sup> Eyes Free<sup>8</sup> Apple CarPlay<sup>®9</sup> compatible, SiriusXM<sup>®18</sup> with 3-month All Access trial,<sup>19</sup> Toyota Connected Services — Safety Connect<sup>®13</sup> with 3-year trial,<sup>14</sup> Wi-Fi Connect Powered by Verizon<sup>15</sup> with up to 2 GB within 6-month trial<sup>16</sup> and Destination Assist Connect<sup>22</sup> with 6-month trial.<sup>23</sup> See [toyota.com/audiomultimedia](http://toyota.com/audiomultimedia) for details.

**XLE Premium Package** — includes Dual-View Blu-ray Disc™ Entertainment Center<sup>26</sup> with 16.4-in. display, SD card and, HDMI inputs, two 120V AC power outlets, remote and two wireless headphones<sup>27</sup> rear parking assist sonar,<sup>54</sup> Driver Easy Speak and Premium Audio with Dynamic Navigation<sup>20</sup> — includes 7-in. touch-screen, AM/FM/HD Radio,<sup>TM17</sup> CD player, USB media port,<sup>10</sup> five USB charge ports,<sup>10</sup> Dynamic Navigation<sup>20</sup> with up to 3-year trial,<sup>21</sup> Dynamic POI Search, Dynamic Voice Recognition, hands-free phone capability and music streaming<sup>12</sup> via Bluetooth<sup>®12</sup> wireless technology, Siri<sup>®</sup> Eyes Free<sup>8</sup> Apple CarPlay<sup>®9</sup> compatible, SiriusXM<sup>®18</sup> with 3-month All Access trial,<sup>19</sup> Toyota Connected Services — Safety Connect<sup>®13</sup> with 3-year trial,<sup>14</sup> Wi-Fi Connect Powered by Verizon<sup>15</sup> with up to 2 GB within 6-month trial<sup>16</sup> and Destination Assist Connect<sup>22</sup> with 6-month trial.<sup>23</sup> See [toyota.com/audiomultimedia](http://toyota.com/audiomultimedia) for details.

## CARS BUILT FOR THE WAY YOU LIVE

At Toyota, we build cars for how you live. From building advanced safety features designed to help prevent crashes to driving cross-country to understand how we can make your driving experience better, our work starts with understanding your needs. Building cars for how you live also means thinking about tomorrow — from fuel efficiency and environmental innovations, to things beyond cars, like a bicycle that you can control with your mind. And because what we learn building cars can help improve lives in other places, we do things like help communities rebuild their homes quickly after a disaster and work with soup kitchens to help them serve more people faster. Toyota. Built for how you live. Together we are going places.

## DISCLOSURES

**1.** Toyota strives to build vehicles to match customer interest and thus they typically are built with popular options and option packages. Not all options/packages are available separately and some may not be available in all regions of the country. If you would prefer a vehicle with no or different options, contact your dealer to check for current availability or the possibility of placing a special order. **2.** Do not rely exclusively on the blind-spot mirror. Always look over your shoulder and use your turn signal. There are limitations to the function of the mirror. See *Owner's Manual* for additional limitations and details. **3.** Do not rely exclusively on the Blind Spot Monitor. Always look over your shoulder and use your turn signal. There are limitations to the function, detection and range of the monitor. See *Owner's Manual* for additional limitations and details. **4.** Do not rely exclusively on the Rear Cross-Traffic Braking system. Always look over your shoulder and use your mirrors to confirm rear clearance. The system cannot prevent all collisions, and performance is dependent on road, weather and vehicle conditions. See *Owner's Manual* for additional limitations and details. **5.** The backup camera does not provide a comprehensive view of the rear area of the vehicle. You should also look around outside your vehicle and use your mirrors to confirm rearward clearance. Environmental conditions may limit effectiveness and view may become obscured. See *Owner's Manual* for additional limitations and details. **6.** The Scout® GPS Link app is compatible with select vehicle models. Availability and accuracy of the information provided by Scout® GPS Link is subject to change at any time without notice and is dependent upon many factors, including smartphone connectivity, capability and cellular reception. Always use safe driving practices and follow all traffic rules. Data charges may apply. Scout® and Telenav® are registered trademarks of Telenav, Inc. **7.** The Scout® GPS Link trial is at no extra cost and begins when the app is downloaded on the vehicle. Contact the Toyota Customer Experience Center at 800-331-4331 for length of trial period. After the trial period expires, enrollment in a paid subscription is required to access the service. Terms and conditions apply. **8.** Always drive safely, obey traffic laws and focus on the road while driving. Siri® is available on select iPhone®/iPad® models and requires Internet access. Siri® is not available in all languages or all areas and features vary by area. Some Siri® functionality and commands are not accessible in the vehicle. Data charges may apply. See apple.com and phone carrier for details. Siri® is a registered trademark of Apple Inc. **9.** Apps and services are subject to change at any time without notice. Data charges may apply. Apple CarPlay® functionality requires a compatible iPhone® connected with an approved data cable into the USB media port. Apple CarPlay® is a registered trademark of Apple Inc. **10.** May not be compatible with all mobile phones, MP3/WMA players and like models. **11.** Advanced voice recognition capabilities vary by head unit. **12.** The Bluetooth® word mark and logos are registered trademarks owned by Bluetooth SIG, Inc., and any use of such marks by Toyota is under license. A compatible Bluetooth®-enabled phone must first be paired. Phone performance depends on software, coverage and carrier. **13.** Toyota Safety Connect® is dependent upon an operative telematics device, a cellular connection and other factors outside of Toyota's control, which can limit the ability to reach the response center or receive emergency support or otherwise limit the functionality or availability of the system. Terms and conditions of subscription service agreement apply. To learn about Toyota's data collection, use, sharing and retention, please visit <https://www.toyota.com/privacyvts/>. Stolen vehicle police report required to use Stolen Vehicle Locator. **14.** The Safety Connect® trial period is at no extra cost and begins on the original date of purchase or lease of a new vehicle. After the trial period expires, enrollment in paid subscription is required to access the service. Terms and conditions apply. **15.** Verizon Wireless is the network provider for Wi-Fi Connect, which uses Verizon's 4G LTE network to transmit data. Data usage applies. Coverage not available everywhere; see [vzw.com](http://vzw.com). See [verizonwireless.com/bestnetwork](http://verizonwireless.com/bestnetwork) for details. LTE is a trademark of ETSI. Other terms apply. Up to 5 devices can be supported using in-vehicle connectivity. Verizon Wireless data subscription required upon end of 6-month trial period or use of 2 GB data (whichever comes first). Use of Wi-Fi Connect subject to Verizon Wireless' Customer Agreement ([verizonwireless.com/legal/notices/customer-agreement/](http://verizonwireless.com/legal/notices/customer-agreement/)), Privacy Policy ([verizon.com/about/privacy/privacy-policy-summary](http://verizon.com/about/privacy/privacy-policy-summary)), and data use policies ([verizonwireless.com/support/vz-email-legal/](http://verizonwireless.com/support/vz-email-legal/)). **16.** The Wi-Fi Connect trial period is at no extra cost and begins on the date of activation. After the trial period expires, enrollment in a paid subscription is required to access the service. Terms and conditions apply. **17.** HD Radio™ Technology manufactured under license from iBiquity Digital Corporation U.S. and Foreign Patents. HD Radio™ and the HD, HD Radio, and "Arc" logos are proprietary trademarks of iBiquity Digital Corp. **18.** SiriusXM® audio services require a subscription sold separately by Sirius XM Radio Inc. If you decide to continue service after your trial, the subscription plan you choose will automatically renew thereafter and you will be charged according to your chosen payment method at then-current rates. Fees and taxes apply. To cancel, you must call SiriusXM at 1-866-635-2349. See SiriusXM Customer Agreement for complete terms at [www.siriusxm.com](http://www.siriusxm.com). All fees and programming subject to change. Not all vehicles or devices are capable of receiving all services offered by SiriusXM. Current information and features may not be available in all locations, or on all receivers. ©2018 Sirius XM Radio Inc. SiriusXM and all related marks and logos are trademarks of Sirius XM Radio Inc. **19.** SiriusXM All Access trial length and service availability may vary by model, model year or trim **20.** Dynamic Navigation is dependent upon an operative telematics device, a cellular connection, navigation map data and GPS satellite signal reception, and other factors outside of Toyota's control, which can limit the ability or functionality of the system. To learn about Toyota Entune™ 3.0's data collection, use, sharing and retention, please visit <https://www.toyota.com/privacyvts/>. Use common sense when relying on information provided. Services and programming subject to change at any time without notice. Services not available in every city or roadway. Subscription required upon end of trial service period. See *Navigation System Owner's Manual* for additional details. **21.** The Dynamic Navigation three-year trial begins the earlier of when the vehicle hits 100 miles or a year after the multimedia system manufacture date, regardless of when you purchase or lease the vehicle. Terms and conditions of subscription service agreement apply. **22.** Destination Assist Connect is dependent upon an operative telematics device, a cellular connection, navigation map data and GPS satellite signal reception, and other factors outside of Toyota's control, which can limit the ability or functionality of the system. Use common sense when relying on this information. To learn about Toyota Entune™ 3.0's data collection, use, sharing and retention, please visit <https://www.toyota.com/privacyvts/>. See *Owner's Manual* for additional details. **23.** The Destination Assist Connect trial period is at no extra cost and begins on the original date of purchase or lease of a new vehicle. After the trial period expires, enrollment in a paid subscription is required to access the service. Terms and conditions of subscription service agreement apply. **24.** JBL® and Clari-Fi® are registered trademarks of Harman International Industries, Inc. **25.** The Bird's Eye View Camera does not provide a comprehensive view of the area surrounding the vehicle. You should also look around outside your vehicle and use your mirrors to confirm surrounding clearance. Environmental conditions may limit effectiveness and view may become obscured. See *Owner's Manual* for additional limitations and details. **26.** A Blu-ray Disc™/DVD player is standard. A separate Blu-ray Disc™/DVD player or game system utilizing the center console's video/audio inputs is required in order to use the split-screen function of the Dual-View system. **27.** Headphones are for passenger use only. Do not use while operating vehicle. **28.** Lounge seating is standard on Sienna Limited FWD and not available on any other models. Do not use the ottoman feature when the vehicle is in motion. Only use when the vehicle is stationary. If the ottoman feature is in use during an accident, the lap belt may slide past the hips. This could result in restraint forces being applied directly to the abdomen, or your neck may contact the shoulder belt, increasing the risk of death or serious injury. See *Owner's Manual* for details. **29.** The Smart Key System may interfere with some pacemakers or cardiac defibrillators. If you have one of these medical devices, please talk to your doctor to see if you should deactivate this system. **30.** HomeLink® and the HomeLink® house icon are registered trademarks of Gentex Corporation. **31.** Vehicle Stability Control is an electronic system designed to help the driver maintain vehicle control under adverse conditions. It is not a substitute for safe and attentive driving practices. Factors including speed, road conditions, weather and driver steering input can all affect whether VSC will be effective in preventing a loss of control. See *Owner's Manual* for additional limitations and details. **32.** Brake Assist is designed to help the driver take full advantage of the benefits of ABS. It is not a substitute for safe driving practices. Braking effectiveness also depends on proper vehicle maintenance, and tire and road conditions. See *Owner's Manual* for additional limitations and details. **33.** Smart Stop Technology® operates only in the event of certain contemporaneous brake and accelerator pedal applications. When engaged, the system will reduce power to help the brakes bring the vehicle to a stop. Factors including speed, road conditions and driver input can all impact stopping distance. Smart Stop Technology® is not a substitute for safe and attentive driving and does not guarantee instant stopping. See *Owner's Manual* for additional limitations and details. **34.** Drivers are responsible for their own safe driving. Always pay attention to your surroundings and drive safely. System effectiveness is dependent on many factors including road, weather and vehicle conditions. See *Owner's Manual* for additional limitations and details. **35.** The TSS Pre-Collision System is designed to help avoid or reduce the crash speed and damage in certain frontal collisions only. It is not a substitute for safe and attentive driving. System effectiveness is dependent on many factors including road, weather and vehicle conditions. See *Owner's Manual* for additional limitations and details. **36.** The Pedestrian Detection system is designed to detect a pedestrian or bicyclist ahead of the vehicle, determine if impact is imminent and help reduce impact speed. It is not a collision avoidance system and is not a substitute for safe and attentive driving. System effectiveness depends on many factors, such as speed, size and position of pedestrian, and weather, light and road conditions. See *Owner's Manual* for additional limitations and details. **37.** Lane Departure Alert with Steering Assist is designed to read visible lane

## DISCLOSURES (continued)

markers under certain conditions. It provides a visual and audible alert, and slight steering force when lane departure is detected. It is not a collision-avoidance system or a substitute for safe and attentive driving. Effectiveness is dependent on many factors including road, weather and vehicle conditions. See *Owner's Manual* for additional limitations and details. **38.** Automatic High Beams operate at speeds above 25 mph. Factors such as a dirty windshield, weather, lighting and terrain limit effectiveness, requiring the driver to manually operate the high beams. See *Owner's Manual* for additional limitations and details. **39.** Dynamic Radar Cruise Control is designed to assist the driver and is not a substitute for safe and attentive driving practices. System effectiveness is dependent on road, weather and traffic conditions. See *Owner's Manual* for additional limitations and details. **40.** All the airbag systems are Supplemental Restraint Systems. All airbags (if installed) are designed to inflate only under certain conditions and in certain types of severe collisions. To decrease the risk of injury from an inflating airbag, always wear seatbelts and sit upright in the middle of the seat as far back as possible. Do not put objects in front of an airbag or around the seatback. Do not use a rearward-facing child seat in any front passenger seat. See *Owner's Manual* for additional limitations and details. **41.** Active front headrests can help reduce the extent of whiplash in certain types of rear-end collisions. **42.** The Tire Pressure Monitor System alerts the driver when tire pressure is critically low. For optimal tire wear and performance, tire pressure should be checked regularly with a gauge; do not rely solely on the monitor system. See *Owner's Manual* for details. **43.** Front and rear parking assist sonar is designed to warn drivers of potential front and rear collisions at speeds of 6 mph or less. Certain vehicle and environmental factors, including an object's shape and composition, may affect the ability of the front and rear parking assist sonar to detect it. Always look around outside the vehicle and use mirrors to confirm clearance. See *Owner's Manual* for additional limitations and details. **44.** Hill Start Assist Control is designed to help minimize backward rolling on steep ascents. It is not a substitute for safe driving judgment and practices. Factors including speed, grade, surface conditions and driver input can all affect whether HAC will be effective in preventing a loss of control. See *Owner's Manual* for additional limitations and details. **45.** The engine immobilizer is a state-of-the-art anti-theft system. When you insert your key into the ignition switch or bring a Smart Key fob into the vehicle, the key transmits an electronic code to the vehicle. The engine will only start if the code in the transponder chip inside the key/fob matches the code in the vehicle's immobilizer. Because the transponder chip is embedded in the key/fob, it can be costly to replace. If you lose a key or fob, your Toyota dealer can help. Alternatively, you can find a qualified independent locksmith to perform high-security key services by consulting your local Yellow Pages or by contacting [www.aloa.org](http://www.aloa.org). **46.** ToyotaCare plan covers normal factory scheduled service for 2 years or 25K miles, whichever comes first. See Toyota dealer for details and exclusions. Valid only in the continental U.S. and Alaska. **47.** Roadside Assistance coverage is 2 years unlimited mileage. Does not include parts and fluids, except emergency fuel delivery. See Toyota Dealer for details and exclusions. Valid only in the continental U.S. and Alaska. **48.** Cargo and load capacity limited by weight and distribution. Always properly secure cargo and cargo area. **49.** Before towing, confirm your vehicle and trailer are compatible, hooked up and loaded properly and that you have any necessary additional equipment. Do not exceed any Weight Ratings and follow all instructions in your *Owner's Manual*. The maximum you can tow depends on base curb weight plus the total weight of any cargo, occupants, and added vehicle equipment. "Added vehicle equipment" includes additional standard/optional equipment and accessories added by the manufacturer, dealers, and/or vehicle owners. The only way to be certain of your vehicle's exact curb weight is to weigh your vehicle without passengers or cargo. **50.** Sienna AWD models come standard with run-flat tires—there is no spare tire. **51.** 2019 Sienna FWD preliminary 19 city/27 hwy/22 combined mpg estimates determined by Toyota. EPA ratings not available at time of posting. Actual mileage will vary. **52.** 2019 Sienna AWD preliminary 18 city/24 hwy/20 combined mpg estimates determined by Toyota. EPA ratings not available at time of posting. Actual mileage will vary. **53.** Rear parking assist sonar is designed to warn drivers of potential rear collisions at speeds of 6 mph or less. Certain vehicle and environmental factors, including an object's shape and composition, may affect the ability of the rear parking assist sonar to detect it. Always look around outside the vehicle and use mirrors to confirm clearance. See *Owner's Manual* for additional limitations and details. **54.** Be sure to obey traffic regulations and maintain awareness of road and traffic conditions at all times. Apps/services vary by phone/carrier; functionality depends on many factors. Select apps use large amounts of data; you are responsible for charges. Apps and services subject to change at any time without notice. See [toyota.com/entune](https://www.toyota.com/entune) for details. To learn about Toyota Entune™ 3.0's data collection, use, sharing and retention, please visit <https://www.toyota.com/privacyvts/>. Stolen vehicle police report required to use Stolen Vehicle Locator. **55.** iPhone® is a registered trademark of Apple Inc. All rights reserved. **56.** Amazon, Alexa, and all related logos and marks are trademarks of Amazon.com, Inc. or its affiliates. Apps, prices and services vary by phone carrier and are subject to change at any time without notice. Subject to smartphone connectivity and capability. Data charges may apply. **57.** Extra-cost color. **58.** This floor mat/floor liner was designed specifically for use in your model and model year vehicle and SHOULD NOT be used in any other vehicle. To avoid potential interference with pedal operation, each mat/liner must be secured with its fasteners. Do not install a floor mat/floor liner on top of an existing floor mat/floor liner. **59.** The Toyota Genuine Accessory Warranty will only apply when the installation is performed by a trained Toyota-approved installer. Please see dealer for details. **60.** Use only if aware of circumstances surrounding the vehicle at time of start. Operate only when safe to do so (e.g., do not remotely start engine if vehicle is in an enclosed space or is occupied by a child). See *Owner's Manual* for limitations and details. **61.** Roof rail with cross bars is not recommended for luggage.

Toyota strives to build vehicles to match customer interest and thus they typically are built with popular options and option packages. Not all options/packages are available separately and some may not be available in all regions of the country. See [toyota.com](http://toyota.com) for information about options/packages commonly available in your area. If you would prefer a vehicle without any or with different options, contact your dealer to check for current availability or the possibility of placing a special order.

Some vehicles are shown with available equipment. Seatbelts should be worn at all times. Please do not allow passengers to ride in the cargo area. For details on vehicle specifications, standard features and available equipment in your area, contact your Toyota dealer. A vehicle with particular equipment may not be available at the dealership. Ask your Toyota dealer to help locate a specifically equipped vehicle.

All information presented herein is based on data available at the time of posting, is subject to change without notice and pertains specifically to mainland U.S.A. vehicles only. Prototypes shown. Actual production vehicles will vary.

## WARRANTIES

Every Toyota Car, Truck and SUV is built to exceptional standards. And that's not idle boasting. We back it up with these Limited Warranty Coverages:

**Basic:** 36 months/36,000 miles (all components other than normal wear and maintenance items).

**Powertrain:** 60 months/60,000 miles (engine, transmission/transaxle, drive system, seatbelts and airbags).

**Rust-Through:** 60 months/unlimited miles (corrosion perforation of sheet metal).

**Emissions:** Coverages vary under Federal and California regulations. Refer to applicable *Warranty and Maintenance Guide* for details.

**Accessories:** For Genuine Toyota Accessories purchased at the time of the new vehicle purchase, the Toyota Accessory Warranty coverage is in effect for 36 months/36,000 miles from the vehicle's in-service date, which is the same coverage as the Toyota New Vehicle Limited Warranty.

For Genuine Toyota Accessories purchased after the new vehicle purchase the coverage is 12 months, regardless of mileage, from the date the accessory was installed on the vehicle, or the remainder of any applicable new vehicle warranty, whichever provides greater coverage.

You may be eligible for transportation assistance if it's necessary that your vehicle be kept overnight for repairs covered under warranty. Please see your authorized Toyota dealership for further details.

For complete details about Toyota's warranties, please visit [www.toyota.com](http://www.toyota.com), refer to the applicable *Warranty and Maintenance Guide* or see your Toyota dealer.



For Toyota Mobility program details, go to [www.toyota.com/mobility](http://www.toyota.com/mobility) or call the Toyota Customer Assistance Center at 1-800-331-4331