

2020 Tundra



Built to work. Born to play.

With a lineage that goes back more than 50 years and iconic nameplates like Land Cruiser and Hilux, Toyota trucks have come to define the word "tough." And there are few things tougher than the 2020 Toyota Tundra full-size pickup. With a powerful 5.7-liter V8 and overbuilt drivetrain, properly equipped Tundras can tow over 10,000 lbs.⁵⁶ Grades like Tundra Platinum and 1794 Edition mean you can haul all that cargo⁵⁶ in style and comfort too. And, of course, each Tundra is assembled with pride in the great state of Texas.* So whether you're looking to haul lumber to the worksite or simply haul through the campsite, there's a 2020 Tundra built just for you. They say that true strength endures, and we're here to prove it. Let's get to work.



2019 Tundra Is the Edmunds
Best Retained Value® Winner for Large Trucks



2019 Toyota Tundra — Best Resale Value:
Top 10 by Kelley Blue Book's KBB.com⁵⁸



1794 Edition CrewMax shown in Smoked Mesquite with available running boards.

See numbered footnotes in Disclosures section. *Assembled in Texas with U.S. and globally sourced parts.

Giving you the freedom to do more.

With the strength of an i-FORCE 5.7L V8 engine, Tundra is built to fulfill your needs. This brawny engine features Dual Independent Variable Valve Timing with intelligence (VVT-i) to optimize engine breathing for maximum power and efficiency. The Acoustic Control Induction System (ACIS) automatically adjusts intake runner length for optimal torque and performance. And to help handle its remarkable 401 lb.-ft. of torque, we equipped it with a 6-speed automatic transmission, two-piece drive shaft and massive 10.5-in. ring gear. So whether you're towing, hauling or just heading home, you can rest assured that Tundra carries a payload of capability.

1794 Edition CrewMax shown in Smoked Mesquite with available running boards and moonroof.

See footnote 6 in Disclosures section for more information on towing.

Rule the road and the worksite.

Tundra CrewMax

- Available on SR5, Limited, Platinum, 1794 Edition and TRD Pro
- Two full-size front doors and two full-size rear doors
- 5.5-ft. bed length
- Standard bench seat with fold-down center console on SR5; standard front bucket seats on Limited, Platinum, 1794 Edition and TRD Pro
- Easy lower and lift tailgate



Ready for work and the weekend.

Tundra Double Cab

- Available on SR, SR5, Limited and TRD Pro
- Two full-size front doors and two forward-hinged rear doors
- 6.5-ft. or 8.1-ft. bed lengths
- Standard bench seat with fold-down center console on SR5; standard front bucket seats on Limited and TRD Pro
- Easy lower and lift tailgate



TRD PRO

TRD PRO



Go over the top. Figuratively and literally. The 2020 Tundra TRD Pro.

Whether it's taking on the harshest deserts, exploring the deepest jungles or simply running your favorite local trail, Tundra TRD Pro has always performed when the roads get rough. And now it's back and ready for more. Engineered by the team at Toyota Racing Development, the 2020 Toyota Tundra TRD Pro is equipped to take you way off-road.⁵⁴ Standard features include lightweight 18-in. forged-aluminum BBS^{®54} wheels, a TRD-tuned FOX^{®7} off-road suspension, a 1/4-inch-thick aluminum skid plate and a heritage-inspired front grille. It's one tough truck that will take you to places you never thought possible.

TRD Pro CrewMax shown in Super White.

See footnote 53 in Disclosures section for more information on off-roading. See numbered footnotes in Disclosures section.

TRD PRO



TRD-TUNED SUSPENSION AND FOX® SHOCKS

This is the real deal. Up front, TRD-tuned springs coil themselves around heavy-duty FOX® shocks. These shocks feature a beefy 46-mm piston and 11 bypass zones to help control the front wheels' extra 1.5 inches of travel. The rear gets two extra inches of travel, plus equally massive FOX® shocks with 12 bypass zones and 2.5-in. piggyback reservoirs.

ALUMINUM SKID PLATE

1/4-in. thick and tough as nails, the TRD aluminum skid plate helps armor the underside of Tundra TRD Pro. It looks good, too, with TRD lettering for extra attitude.

TRD PRO DUAL EXHAUST

Tundra TRD Pro comes standard with a dual cat-back exhaust featuring black chrome exhaust tips. This mandrel-bent exhaust not only amplifies this truck's good looks; it also unleashes the growl of the powerful 5.7-liter V8.



RIGID INDUSTRIES® LED FOG LIGHTS

Designed for an OEM-perfect fit, these Rigid Industries® LED fog lights pack a lot of brightness into a compact package. Rugged construction and a 35-degree wide-angle beam pattern instantly light up when and where you need it.



TRD PRO WHEELS

Standard on every Tundra TRD Pro is a set of forged 18-in. BBS® wheels that do more than just look the part; their forged aluminum construction reduces unsprung mass by 3.35 lbs. per wheel. Not only does this help improve cornering response; it also enhances its overall ride quality.



TRD SPORT



SR5 CrewMax shown in Magnetic Gray Metallic with available TRD Sport Package and TRD Sport Convenience Package.

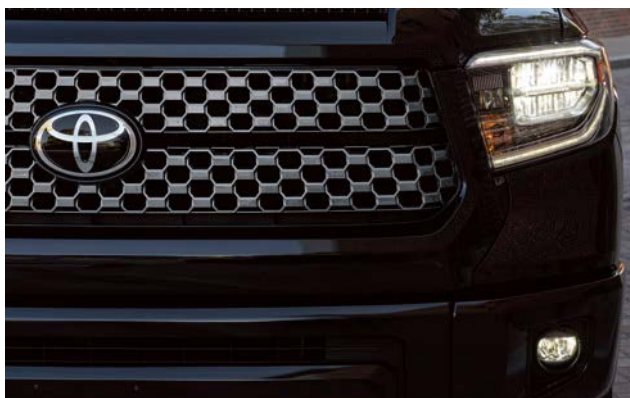
Tuned to turn heads. The TRD Sport Package.

Toyota Racing Development (TRD) is one of the most revered names in performance. That's why the team at TRD goes above and beyond to ensure that, when a vehicle wears the TRD name, it lives up to the heritage. So you can bet that Tundra with the TRD Sport Package is no ordinary truck. Its commanding presence, 20-in. TRD Sport Package alloy wheels and powerful hood scoop will get you noticed on the streets. You'll notice the sharpened handling that comes from the sport-tuned suspension. It's one bold ride that will help you rule every road.



TRD FRONT AND REAR ANTI-SWAY BARS AND TRD SPORT BILSTEIN® SHOCKS

Exclusive to Tundra TRD Sport is a unique set of sport-tuned anti-sway bars featuring a solid 36-mm anti-sway bar up front, a solid 25-mm rear anti-sway bar and 46-mm monotube-type Bilstein® shocks. Designed to optimize on-road street performance, these parts deliver sharper turn-in response, flatter cornering and more heartbeats per minute.



LED HEADLIGHTS

More light. More efficiency. And a whole lot more attitude. In addition to the available LED fog lights, Tundra's LED headlights incorporate a head-turning Daytime Running Lights (DRL) treatment, giving this truck an aggressive look that won't be ignored.



TRD SHIFT KNOB

Keep a firm grip on things. The available leather-wrapped shift knob features silver-accented trim and the TRD logo.

TRD OFF-ROAD PACKAGE⁵³

This comprehensive upgrade package includes 18-in. split 5-spoke TRD Off-Road Package alloy wheels and all-terrain P275/65R18 tires, trail-tuned Bilstein® shock absorbers, engine skid plate, fuel tank skid plate, bedside TRD Off-Road decals and front tow hooks⁶ (on 4x2 models; standard on 4x4 models).

AUTOMATIC LIMITED-SLIP DIFFERENTIAL (AUTO LSD)⁵⁵

Auto LSD uses the rear brakes to simulate the action of a mechanical limited-slip differential and is much easier to maintain. With Auto LSD, Tundra automatically applies brake pressure to the powered wheel with limited to no traction, without restricting engine power. This helps increase resistance at the slipping wheel, which in turn helps feed power to the wheel with grip. With Auto LSD, even a 4x2 Tundra can pull itself out of many low-traction situations.

4WD ACTIVE TRACTION CONTROL (A-TRAC)

Tundra models equipped with 4WD include an A-TRAC system that optimizes traction across the front and rear axles simultaneously, helping improve grip on low-traction surfaces. This A-TRAC system also allows full use of the 2-speed transfer case, so you always have on-demand access to Tundra's incredible torque.

Take your weekends farther.

We expect a lot more from our weekends. We crave dirt, speed and action. So that's why we created the awesome Tundra TRD Off-Road Package.⁵³ Available on 1794 Edition, Limited and SR5 grades, this package equips Tundra with unique 18-in. wheels wrapped in Michelin® all-terrain tires and TRD Off-Road bedside decals. The suspension gets an overhaul too, with 46-mm Bilstein® monotube-type shocks tuned by Toyota Racing Development, dual-rate front springs and unique dual-rate rear leaf springs. And when equipped on 2WD Tundras, this package also includes front tow hooks.⁶ Exactly what you need when taking on gnarly terrain.



SR5 Double Cab shown in Silver Sky Metallic with available TRD Off-Road Package,⁵³ deck rail system³ and accessory spray-on bedliner. Prototype shown with options.

See footnote 56 in Disclosures section for more information on payload.

SAFETY



Limited CrewMax shown in Cavalry Blue with available Limited Premium Package and running boards.

A smarter way to take command.

Whether you're hitting the river or heading to the job site, Tundra's got the tech to help you keep track of the stuff that matters most. Enjoy the clear view of all your systems in front of you. A customizable 4.2-in. Multi-Information Display (MID) puts Tundra's vitals front and center, while an available 8-in. touch-screen display gives you access to all of Tundra's functions, including your entertainment apps, so all you have to do is enjoy the ride.

1794 Edition CrewMax interior shown in premium Brown leather trim.

Apple CarPlay[®] screen shown. Screen depiction accurate as of summer 2019. See numbered footnotes in Disclosures section.

TECHNOLOGY



1794 EDITION INTERIOR

With more than just muscle, the 1794 Edition CrewMax represents a leap forward in full-size truck luxury. This is everything you want in a premium truck, and maybe more. Every part of the interior has been refined, from the premium perforated leather-trimmed seats with heated and ventilated front seats, to the wood-grain-style accents that add to its classic Western look.

1794 Edition CrewMax interior shown in premium Brown leather trim.

See numbered footnotes in Disclosures section.

ANDROID AUTO™¹⁰

By pairing your compatible Android™ phone with Tundra, you can access your Google Assistant,™^{64, 65} get real-time traffic alerts, make and receive phone calls, listen to your favorite soundtrack or find a place to eat — all with just your voice.



PREMIUM AUDIO WITH DYNAMIC NAVIGATION²⁷ AND JBL®³²

The available Premium Audio with Dynamic Navigation and JBL® puts functionality right at your fingertips, thanks to an 8-in. high-resolution touch-screen display. Best of all, you can access all this tech hands-free when it's paired with your Bluetooth®-compatible¹⁴ smartphone.



BLIND SPOT MONITOR (BSM)⁴ WITH REAR CROSS-TRAFFIC ALERT (RCTA)⁴⁹

When the available Blind Spot Monitor detects a vehicle, it illuminates a warning indicator on the appropriate outside mirror to alert you to the presence of another vehicle, helping you to determine when it's safe to change lanes. Rear Cross-Traffic Alert works in much the same way. When you slowly back out of a driveway or parking spot, it provides audible and visual indicators to help warn you of approaching vehicles.



CONNECTED SERVICES



SAFETY CONNECT^{®18}

When the unexpected occurs, Safety Connect[®] can help. Drivers can be connected to our 24/7 response center at the touch of a button. In case of an accident or emergency, an agent can notify local emergency services to request dispatch to the vehicle's location. You also get 24/7 Roadside Assistance^{®9} and Stolen Vehicle Locator^{®10} to give you peace of mind that help is on the way so you can be on yours.

Limited CrewMax shown in Cavalry Blue with available Limited Premium Package and running boards.

See numbered footnotes in Disclosures section.

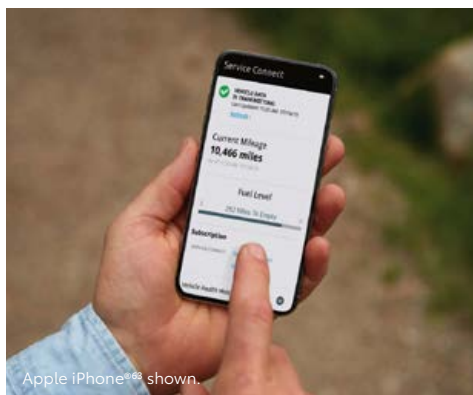
Technology that keeps up with you.

Out of sight, but never out of mind. Stay in touch with the world while inside Tundra — and even when you're away, you can stay connected with Connected Services.¹⁷ Remotely monitor guest drivers, control interior temps, locate your Tundra in a crowded parking lot, and more. Discover a convenience and sense of security with a connection designed to help make driving safe.



AVAILABLE REMOTE CONNECT^{25, 61}

Toyota's available Remote Connect feature allows you to access select vehicle capabilities from your smart device. Locking and unlocking doors, starting and stopping the engine, and finding and monitoring vehicle status are all possible through the Toyota app.²⁵ One-year trial included.²⁶



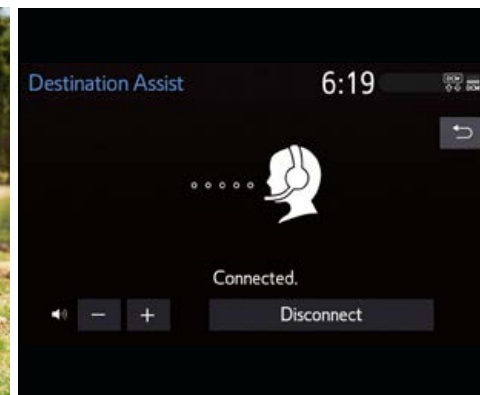
AVAILABLE SERVICE CONNECT²³

Stay up to date on your Tundra's information. Vehicle health reports provide data such as mileage, fuel level and service history. Enable maintenance alerts and receive maintenance reminders that can also be sent to your preferred dealer for extra convenience. Ten-year trial included.²⁴ Apple iPhone^{®63} shown.



WI-FI CONNECT²⁰

When you enable Wi-Fi Connect services, you can turn your Tundra into a hotspot with 4G connectivity. This feature allows up to five devices to be connected to your favorite apps for work or play while conserving battery power and data for your devices. Three-month trial included.²¹



AVAILABLE DESTINATION ASSIST³⁰

Take the stress out of being in unfamiliar territory. Destination Assist connects you with a live agent to help you locate places to go and things to do. One-year trial included.³¹

INTERIOR



Platinum CrewMax interior shown in premium Black leather trim.

The comfortable side of rugged.

There's nothing wrong with embracing one's softer side — especially when that softer side is found inside Tundra. The optimal blend of functionality and comfort, this spacious cabin gives you and your crew plenty of room to stretch out. Premium materials are used throughout, giving this rugged interior a solid, upscale feel. An intuitive control layout puts what you need right where you need it, and available dual zone climate control helps ensure that everyone stays comfortable, no matter the ride.



REAR POWER WINDOW

Let the outside in. Tundra's class-exclusive⁶⁶ available power vertical window lets you roll the entire rear glass all the way down with the simple press of a button.



AVAILABLE POWER TILT/SLIDE MOONROOF

Enjoy what the sky has to offer. Pull the sunshade back to add some extra light, tilt it up to get the air flowing, or open it up completely to let the wind flow through your hair.



CENTER CONSOLE

Opt for available front bucket seats, and you'll get a large center console with a covered storage compartment. A 12V auxiliary power outlet⁶⁸ is also there whenever you need to plug in.



SPLIT FOLD-UP REAR SEATS

To create even more usable cabin space, the rear seats in the Double Cab and CrewMax fold up, instead of flat. This not only creates more room; it also makes it easier to load cargo.⁶⁷

Strength to bring it with you.

To say Tundra can tow is an understatement. With features like staggered, outboard-mounted shocks, a heavy-duty TripleTech™ frame with an integrated towing hitch receiver, plus a trailer hitch that utilizes 12 high-strength bolts built into the frame — Tundra has the brawn to help you tow up to 10,200 lbs.⁶ And for every other adventure, Tundra's i-FORCE 5.7L V8 handles home improvement projects to last-minute getaways with ease, thanks to a payload capacity of up to 1730 lbs.^{5,6}



1794 Edition CrewMax shown in Smoked Mesquite with available running boards.

See footnote 6 in Disclosures section for more information on towing.

38
GALLON



38-GALLON FUEL TANK

The workday doesn't stop for gas, and neither do you. With Tundra's available 38-gallon fuel tank, the largest in its segment;⁵⁶ you can rest assured that you've got the fuel you need for life's longer hauls.

AVAILABLE DECK RAIL SYSTEM³

Pile it on: Tundra can take it. The available deck rail system incorporates four adjustable tie-down cleats, each rated at 220 lbs., to help keep your cargo secure.⁵⁶

INTEGRATED TRAILER BRAKE CONTROLLER (ITBC)³⁷

Big trucks tow big toys, which is why Tundra's available Integrated Trailer Brake Controller (ITBC) and standard Trailer-Sway Control (TSC)⁵⁰ are so important. These features not only let you adjust the amount of trailer braking based on the weight of the trailer, but they also detect trailer sway and apply brake pressure at individual wheels to help keep everything stabilized. (Compatible trailer required.)



POWERFUL BRAKES

A big part of controlling a trailer is having the ability to stop it. Massive 13.9-in. front brake rotors and beefy 4-piston front brake calipers help Tundra keep speeds in check — even when hauling those heavy loads.



Heavy-duty safety to help carry you through the long haul.

Toyota's Star Safety System™ is a suite of six safety features offered standard on every new Toyota Tundra. The system includes Vehicle Stability Control (VSC),⁴⁴ Traction Control (TRAC), Anti-lock Brake System (ABS) with Electronic Brake-force Distribution (EBD), Brake Assist (BA)⁴⁵ and Smart Stop Technology® (SST).⁴⁶ Termed "active" safety features, they're designed to operate in certain situations to help prevent accidents from occurring in the first place.



LATCH

To help keep children safe and secure, Tundra has LATCH, which stands for "Lower Anchors and Tethers for CHildren." With lower anchors on the outboard rear seats and a tether anchor on the rear center seat, LATCH allows you to securely mount a child seat quickly and easily.



BACKUP CAMERA⁹

Tundra's standard backup camera helps make hitching up that boat a bit easier. When you shift into Reverse, the available 8-in. touch-screen displays an image of what the camera sees behind you.



EIGHT AIRBAGS⁴⁷

Tundra comes equipped with driver and front outboard passenger airbags, side curtain airbags and front seat-mounted side airbags.



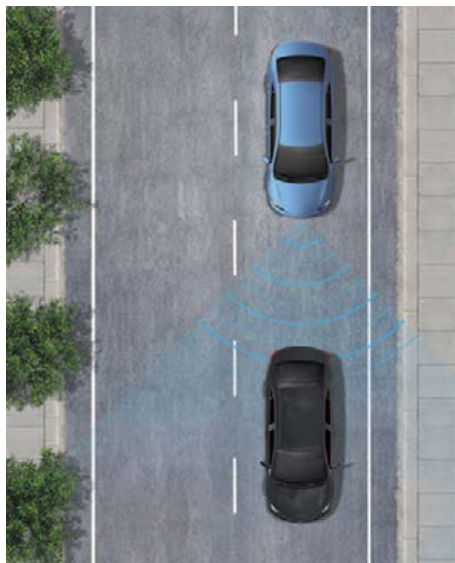
STAR SAFETY SYSTEM™

Tundra comes standard with the Star Safety System™, a suite of six advanced safety features that includes Vehicle Stability Control (VSC),⁴⁴ Traction Control (TRAC), Anti-lock Brake System (ABS), Electronic Brake-force Distribution (EBD), Brake Assist (BA)⁴⁵ and Smart Stop Technology® (SST).⁴⁶



Designed for safety.

Toyota Safety Sense™ P (TSS-P)⁴⁰ is a bundle of active safety features that comes standard on every new Toyota Tundra. These innovative features were designed to help protect you and your passengers from harm.



DYNAMIC RADAR CRUISE CONTROL (DRCC)³⁴

Intended for highway use and similar to “constant speed” cruise control, Dynamic Radar Cruise Control (DRCC) lets you drive at a preset speed. DRCC uses vehicle-to-vehicle distance control, which adjusts your speed, to help you maintain a preset distance from vehicles ahead of you that are driving at a slower speed. If a driver is traveling slower than you, or within your preset range, DRCC will automatically slow your vehicle down without deactivating cruise control. If DRCC determines you need to slow down more, an audio and visual alert notifies you and brakes are applied.



LANE DEPARTURE ALERT (LDA)³⁵

Under certain circumstances, Lane Departure Alert (LDA) is designed to help detect lane departure on roads with visible lane markings. LDA only activates when you're traveling at a speed of 32 mph or faster. When you hear and see the alert, after carefully checking the road around you, safely direct your vehicle back to the center of your lane.



AUTOMATIC HIGH BEAMS (AHB)⁴³

The Automatic High Beams (AHB) feature is a safety system designed to help you see more clearly at night — without distracting other drivers. Designed to activate at speeds above 25 mph, AHB relies on an in-vehicle camera to help detect the headlights of oncoming vehicles and taillights of preceding vehicles, then automatically toggles between high and low beams accordingly to provide the appropriate amount of light. By using high beams more frequently, the system may allow for earlier detection of pedestrians and obstacles.



PRE-COLLISION SYSTEM WITH PEDESTRIAN DETECTION (PCS w/PD)⁴¹

Pre-Collision System with Pedestrian Detection (PCS w/PD) is designed to help keep the road safe by detecting a vehicle or a pedestrian in certain situations. By combining millimeter-wave radar with a camera capable of shape recognition, the system provides an audio/visual alert, warning you of a possible collision under certain circumstances. If you don't react, the system is designed for automatic braking support to help mitigate the potential for a collision.



SR

Available in Double Cab

Drivetrain/Powertrain

- 5.7-Liter Aluminum i-FORCE V8 DOHC 32-Valve with Dual Independent Variable Valve Timing with intelligence (VVT-i)
 - 381 hp @ 5600 rpm; 401 lb.-ft. @ 3600 rpm
 - Tow Package⁶
- 6-speed Electronically Controlled automatic Transmission with intelligence (ECT-i)
- Rear-Wheel Drive (RWD) or 4WDemand part-time 4WD

Exterior Features

- 18-in. styled steel wheels
- Halogen headlights with LED accent lights
- Front and rear mudguards
- Black heated power outside mirrors

Interior Features

- Audio with 7.0-in. touch-screen, and Apple CarPlay,^{®11} Android Auto^{™10} and Amazon Alexa⁶⁹ compatible
- Bluetooth^{®16} wireless technology
- USB media port¹² with charging capability
- Integrated backup camera⁹
- 4.2-in. Multi-Information Display (MID)
- 40/20/40 split fold-down front bench fabric seat
- Power windows and door locks
- Integrated Trailer Brake Controller (ITBC)³⁷

Safety/Convenience

- Toyota Safety Sense[™] P (TSS-P)⁴⁰ includes:
 - Pre-Collision System with Pedestrian Detection (PCS w/PD)⁴¹
 - Lane Departure Alert (LDA)³⁵ with Sway Warning System (SWS)⁴²
 - Automatic High Beams (AHB)⁴³
 - Dynamic Radar Cruise Control (DRCC)³⁴
- Star Safety System[™]

Options and Packages

- Work Truck Package
- Tow mirrors
- Running boards
- Deck rail system³



SR5

Available in Double Cab and CrewMax

Drivetrain/Powertrain

- 5.7-Liter Aluminum i-FORCE V8 DOHC 32-Valve with Dual Independent Variable Valve Timing with intelligence (VVT-i)
 - 381 hp @ 5600 rpm; 401 lb.-ft. @ 3600 rpm
 - Tow Package⁶
- 6-speed Electronically Controlled automatic Transmission with intelligence (ECT-i)
- Rear-Wheel Drive (RWD) or 4WDemand part-time 4WD

Exterior Features

- Gray grille with chrome surround
- 18-in. styled steel wheels
- Halogen headlights with LED accent lights
- Halogen fog lights
- Chrome front and rear bumper endcaps

Interior Features

- Audio Plus with 8-in. high-resolution touch-screen, and Apple CarPlay,^{®11} Android Auto^{™10} and Amazon Alexa⁶⁹ compatible
- HD Radio^{™22} and SiriusXM^{®15}
- Bluetooth^{®14} wireless technology
- USB media port¹² with charging capability
- 40/20/40 split fold-down front bench fabric seat
- Integrated backup camera⁹
- Integrated Trailer Brake Controller (ITBC)³⁷

Safety/Convenience

- Toyota Safety Sense[™] P (TSS-P)⁴⁰ includes:
 - Pre-Collision System with Pedestrian Detection (PCS w/PD)⁴¹
 - Lane Departure Alert (LDA)³⁵ with Sway Warning System (SWS)⁴²
 - Automatic High Beams (AHB)⁴³
 - Dynamic Radar Cruise Control (DRCC)³⁴
- Star Safety System[™]

Options and Packages

- SR5 Leather Package
- SR5 Upgrade Package
 - 38-gallon fuel tank
- Convenience Package
- TRD Sport Package
- TRD Sport Convenience Package
- TRD Off-Road Package⁵³
- SX Package
- 18-in. 5-spoke alloy wheels
- Premium Audio with Dynamic Navigation²⁷
- Tow mirrors
- Running boards
- Deck rail system³



Limited

Available in Double Cab and CrewMax

Drivetrain/Powertrain

- 5.7-Liter Aluminum i-FORCE V8 DOHC 32-Valve with Dual Independent Variable Valve Timing with intelligence (VVT-i)
 - 381 hp @ 5600 rpm; 401 lb.-ft. @ 3600 rpm
 - Tow Package⁶
- 6-speed Electronically Controlled automatic Transmission with intelligence (ECT-i)
- Rear-Wheel Drive (RWD) or 4WDemand part-time 4WD

Exterior Features

- Silver grille with chrome surround
- 20-in. split 5-spoke alloy wheels
- LED headlights with LED accent lights and LED fog lights
- Chrome heated outside mirrors
- Deck rail system³
- 38-gallon fuel tank

Interior Features

- Premium Audio with Dynamic Navigation²⁷ and Apple CarPlay,^{®11} Android Auto^{™10} and Amazon Alexa⁶⁹ compatible
- Leather-trimmed seats
- Heated front bucket seats with power driver and passenger seating
- Dual zone automatic climate control
- Smart Key System³⁸ on front doors with Push Button Start
- Power horizontal sliding rear window (Double Cab models)
- Power vertical rear window (CrewMax models)
- Integrated Trailer Brake Controller (ITBC)³⁷

Safety/Convenience

- Toyota Safety Sense[™] P (TSS-P)⁴⁰ includes:
 - Pre-Collision System with Pedestrian Detection (PCS w/PD)⁴¹
 - Lane Departure Alert (LDA)³⁵ with Sway Warning System (SWS)⁴²
 - Automatic High Beams (AHB)⁴³
 - Dynamic Radar Cruise Control (DRCC)³⁴
- Star Safety System[™]

Options and Packages

- Limited Premium Package
 - Premium Audio with Dynamic Navigation²⁷ and JBL^{®32} and Apple CarPlay^{®11} compatible (CrewMax only)
- TRD Off-Road Package⁵³
- Tow mirrors
- Running boards
- Power tilt/slide moonroof with sliding sunshade (CrewMax only)



Platinum

Available in CrewMax

Drivetrain/Powertrain

- 5.7-Liter Aluminum i-FORCE V8 DOHC 32-Valve with Dual Independent Variable Valve Timing with intelligence (VVT-i)
 - 381 hp @ 5600 rpm; 401 lb.-ft. @ 3600 rpm
 - Tow Package⁶
- 6-speed Electronically Controlled automatic Transmission with intelligence (ECT-i)
- Rear-Wheel Drive (RWD) or 4WDemand part-time 4WD

Exterior Features

- Black grille with color-keyed grille surround
- 20-in. 6-spoke alloy wheels
- LED headlights with LED accent lights and LED fog lights
- Chrome heated auto-dimming and power-folding mirrors
- Color-keyed front and rear bumpers
- 38-gallon fuel tank
- Platinum badging

Interior Features

- Premium Audio with Dynamic Navigation,²⁷ JBL^{®32} and Apple CarPlay,^{®11} Android Auto^{™10} and Amazon Alexa⁶⁹ compatible
- Black premium perforated leather-trimmed seats
- Heated and ventilated front bucket seats
- Smart Key System³⁸ on front doors with Push Button Start
- Power tilt/telescopic steering wheel
- Memory system for seats, outside mirrors and steering wheel
- Brushed-metal-style trim
- Dual zone automatic climate control
- Unique floor mats³³
- Power vertical rear window
- Integrated Trailer Brake Controller (ITBC)³⁷

Safety/Convenience

- Toyota Safety Sense[™] P (TSS-P)⁴⁰ includes:
 - Pre-Collision System with Pedestrian Detection (PCS w/PD)⁴¹
 - Lane Departure Alert (LDA)³⁵ with Sway Warning System (SWS)⁴²
 - Automatic High Beams (AHB)⁴³
 - Dynamic Radar Cruise Control (DRCC)³⁴
- Star Safety System[™]
- Blind Spot Monitor (BSM)⁴ with Rear Cross-Traffic Alert (RCTA)⁴⁹
- Front and rear parking assist sonar⁴⁸

Options and Packages

- Running boards
- Power tilt/slide moonroof with sliding sunshade



1794 Edition

Available in CrewMax

Drivetrain/Powertrain

- 5.7-Liter Aluminum i-FORCE V8 DOHC 32-Valve with Dual Independent Variable Valve Timing with intelligence (VVT-i)
 - 381 hp @ 5600 rpm; 401 lb.-ft. @ 3600 rpm
 - Tow Package³
- 6-speed Electronically Controlled automatic Transmission with intelligence (ECT-i)
- Rear-Wheel Drive (RWD) or 4WDemand part-time 4WD

Exterior Features

- Chrome grille
- 20-in. 6-spoke alloy wheels
- LED headlights with LED accent lights and LED fog lights
- Chrome heated auto-dimming and power-folding mirrors
- Chrome front bumper endcaps and color-keyed rear bumper
- 38-gallon fuel tank
- 1794 Edition badging

Interior Features

- Premium Audio with Dynamic Navigation,²⁷ JBL^{®32} and Apple CarPlay,^{®11} Android Auto^{™10} and Amazon Alexa⁶⁹ compatible
- Brown premium perforated leather-trimmed seats with Ultrasuede^{®70} seat inserts
- Heated and ventilated front bucket seats
- Smart Key System³⁸ on front doors with Push Button Start
- Power tilt/telescopic steering wheel
- Memory system for seats, outside mirrors and steering wheel
- Wood-style trim (including steering wheel and shift knob)
- Dual zone automatic climate control
- Unique floor mats³³
- Power vertical rear window
- Integrated Trailer Brake Controller (ITBC)³⁷

Safety/Convenience

- Toyota Safety Sense[™] P (TSS-P)⁴⁰ includes:
 - Pre-Collision System with Pedestrian Detection (PCS w/PD)⁴¹
 - Lane Departure Alert (LDA)³⁵ with Sway Warning System (SWS)⁴²
 - Automatic High Beams (AHB)⁴³
 - Dynamic Radar Cruise Control (DRCC)³⁴
- Star Safety System[™]
- Blind Spot Monitor (BSM)⁴ with Rear Cross-Traffic Alert (RCTA)⁴⁹
- Front and rear parking assist sonar⁴⁸

Options and Packages

- TRD Off-Road Package⁵³
- 20-in. chrome-clad alloy wheels
- Running boards
- Power tilt/slide moonroof with sliding sunshade



TRD Pro

Available in Double Cab and CrewMax

Drivetrain/Powertrain and Performance

- 5.7-Liter Aluminum i-FORCE V8 DOHC 32-Valve with Dual Independent Variable Valve Timing with intelligence (VVT-i)
 - 381 hp @ 5600 rpm; 401 lb.-ft. @ 3600 rpm
 - Tow Package⁶
- 6-speed Electronically Controlled automatic Transmission with intelligence (ECT-i)
- 4WDemand part-time 4WD
- TRD exhaust system with black chrome tips
- TRD Pro front and rear FOX^{®7} shocks

Exterior Features

- Heritage "TOYOTA" front grille
- 18-in. 5-spoke BBS^{®54} forged-aluminum TRD Pro wheels with Michelin[®] P275/65R18 tires
- TRD aluminum 1/4-in.-thick front skid plate
- Hood scoop
- LED headlights with LED accent lights
- Rigid Industries^{®2} LED fog lights
- "TRD Pro" bed stamp
- Deck rail system³
- 38-gallon fuel tank
- Black external badging

Interior Features

- Premium Audio with Dynamic Navigation,²⁷ JBL^{®32} and Apple CarPlay,^{®11} Android Auto^{™10} and Amazon Alexa⁶⁹ compatible (CrewMax)
- Premium Audio with Dynamic Navigation,²⁷ JBL^{®32} and Apple CarPlay,^{®11} Android Auto^{™10} and Amazon Alexa⁶⁹ compatible (Double Cab)
- TRD Pro leather-trimmed front bucket seats embroidered with red contrast stitching and TRD Pro logo
- TRD shift knob
- TRD Pro floor mats³³
- Fixed center console with "TRD Pro" badge
- Power tilt/slide moonroof with sliding sunshade
- Smart Key System³⁸ on front doors with Push Button Start
- Power vertical rear window (CrewMax only)
- Integrated Trailer Brake Controller (ITBC)³⁷

Safety/Convenience

- Toyota Safety Sense[™] P (TSS-P)⁴⁰ includes:
 - Pre-Collision System with Pedestrian Detection (PCS w/PD)⁴¹
 - Lane Departure Alert (LDA)³⁵ with Sway Warning System (SWS)⁴²
 - Automatic High Beams (AHB)⁴³
 - Dynamic Radar Cruise Control (DRCC)³⁴
- Star Safety System[™]

For additional information on TRD Pro, please visit toyota.com/tundra



Platinum CrewMax shown in Midnight Black Metallic.

COLOR/TRIM*

Color



Midnight Black Metallic

Voodoo Blue

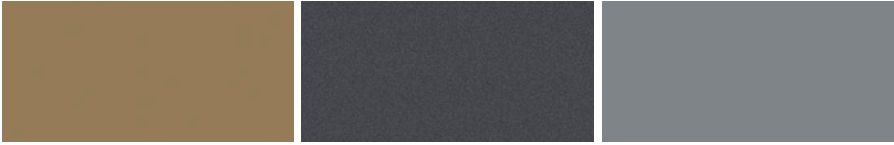
Cavalry Blue



Army Green

Smoked Mesquite

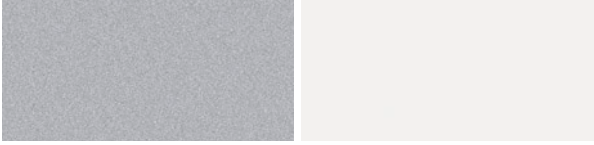
Barcelona Red Metallic



Quicksand

Magnetic Gray Metallic

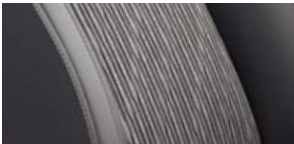
Cement



Silver Sky Metallic

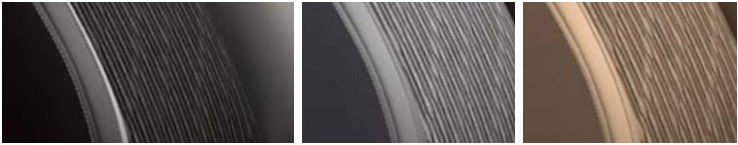
Super White

Trim



SR fabric shown in Graphite

Also available in

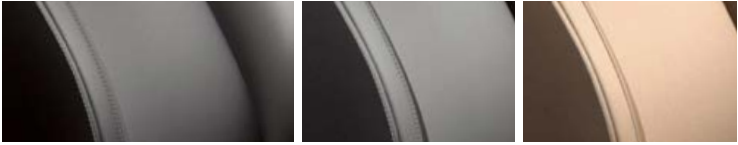


SR5 fabric shown in Black

Graphite

Sand Beige

Also available in



Limited leather trim shown in Black

Graphite

Sand Beige



Platinum premium leather trim shown in Black



1794 Edition premium leather trim shown in Brown



TRD Pro premium leather trim shown in Black

*Not all colors and trims are available on all models and grades. Availability is subject to change. See dealer for details.

Combinations

COLOR SELECTOR	SR	SR5	LIMITED	PLATINUM	1794 EDITION	TRD PRO
Midnight Black Metallic	GRAPHITE	BLACK, GRAPHITE, SAND BEIGE	BLACK, GRAPHITE, SAND BEIGE	BLACK	BROWN	BLACK
Voodoo Blue	•	BLACK, GRAPHITE, SAND BEIGE	BLACK, GRAPHITE, SAND BEIGE	BLACK	BROWN	•
Cavalry Blue	•	BLACK, GRAPHITE, SAND BEIGE	BLACK, GRAPHITE, SAND BEIGE	•	•	•
Army Green	•	•	•	•	•	BLACK
Barcelona Red Metallic	GRAPHITE	BLACK, GRAPHITE, SAND BEIGE	BLACK, GRAPHITE, SAND BEIGE	BLACK	BROWN	•
Smoked Mesquite	•	•	BLACK, SAND BEIGE	BLACK	BROWN	•
Quicksand	•	BLACK, GRAPHITE, SAND BEIGE	BLACK, GRAPHITE, SAND BEIGE	•	•	•
Magnetic Gray Metallic	•	BLACK, GRAPHITE	BLACK, GRAPHITE	BLACK	BROWN	BLACK
Cement	•	BLACK, GRAPHITE	BLACK, GRAPHITE	•	•	•
Silver Sky Metallic	GRAPHITE	BLACK, GRAPHITE	BLACK, GRAPHITE	BLACK	BROWN	•
Super White	GRAPHITE	BLACK, GRAPHITE, SAND BEIGE	BLACK, GRAPHITE, SAND BEIGE	BLACK	BROWN	BLACK

ACCESSORIES

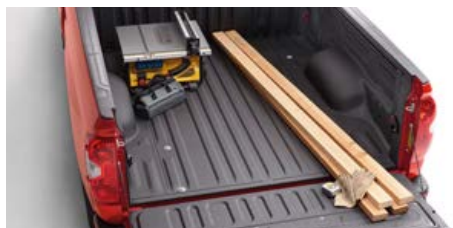
You own it. But there are a few things you might want to do before it's really yours. Maybe it needs different wheels, tube steps or tie-downs, or a bed extender⁵⁶ for doing the stuff that really matters to you. Whatever it is, ask your sales associate to see the 2020 Tundra Accessories brochure, a soup-to-nuts catalog of Genuine Toyota Accessories designed to give your Tundra the finishing touches that make it unmistakably yours. For a complete list of accessories, go to toyota.com/tundra.

Alloy wheel locks — black or chrome
All-weather floor liners³³
Ball mount⁶
Bed extender⁵⁶
Bed lighting kit
Bed mat
BedStep®
Black lug nuts
Blackout emblem overlays
Brushed stainless steel step boards
Cargo divider⁶⁷
Cargo net — exterior
Cargo tote
Carpet floor mats³³

Cast-aluminum running boards
Center console tray
Classic black running boards
Coin holder/ashtray cup
Deck rail camera mount⁷¹
Deck rail system³
Door edge guards
Doorsill protectors
Emergency assistance kit
Exhaust tip — black or chrome
First aid kit
Glass Breakage Sensor (GBS)
Hard tri-fold tonneau cover
High-performance LED fog lights — black or chrome

Mini tie-downs with hooks^{56, 72}
Paint protection film⁷³
Power tailgate lock
Predator tube step
Security system
Skid Resistor™ bedliner
Spare tire lock
Spray-on bedliner
Tailgate insert — black or chrome
Tie-down cleats
TRD 18-in. forged matte-black wheel
TRD anti-sway bar
TRD brake pads — front or rear
TRD carpet floor mats³³

TRD front skid plate
TRD oil cap
TRD oil filter
TRD performance air intake
TRD performance dual exhaust — black or chrome
TRD performance shocks
TRD radiator cap
TRD shift knob — black or silver
Tube steps — black or chrome
“Tundra” tailgate insert badge — black or chrome
Under-seat storage
Universal tablet holder⁶²
Yakima® locking fork bike mount



Spray-on bedliner



All-weather floor liners³³



Predator tube step



Hard tri-fold tonneau cover



Exhaust tip — black or chrome



Doorsill protector



Tailgate insert — black or chrome



Blackout emblem overlays

FEATURES¹

EXTERIOR	DOUBLE CAB				CREWMAX				
	SR	SR5	LIMITED	TRD PRO	SR5	LIMITED	PLATINUM	1794 EDITION	TRD PRO
LED headlights with LED accent lights, with manual level control and auto on/off feature	—	—	S	—	—	S	S	S	—
LED headlights with LED accent lights and black sport trim, with manual level control and auto on/off feature	—	P	P	S	P	P	—	P	S
LED fog lights	—	P	S	—	P	S	S	S	—
Rigid Industries® ² LED fog lights	—	—	—	S	—	—	—	—	S
Halogen headlights with LED accent lights, with manual level control and auto on/off feature	S	S	—	—	S	—	—	—	—
Halogen fog lights	—	S	—	—	S	—	—	—	—
Gray grille with gray surround	S	—	—	—	—	—	—	—	—
Gray grille with chrome surround and chrome front bumper endcaps	—	S	—	—	S	—	—	—	—
Silver grille with chrome surround and chrome front bumper endcaps	—	—	S	—	—	S	—	—	—
Black honeycomb style grille with color-keyed grille surround and color-keyed front bumper endcaps	—	—	—	—	—	—	S	—	—
Gray grille with color-keyed grille surround and color-keyed front bumper endcaps	—	P	—	—	P	—	—	—	—
Chrome grille with chrome front bumper endcaps	—	—	—	—	—	—	—	S	—
“TOYOTA” grille with color-keyed grille surround and color-keyed endcaps	—	—	—	S	—	—	—	—	S
Chrome rear bumper	—	S	S	—	S	S	—	—	—
Color-keyed rear bumper	—	P	P	S	P	P	S	S	S
Black plastic rear bumper	S	—	—	—	—	—	—	—	—
Deck rail system ³ with four adjustable tie-down cleats	O	O	S	S	O	S	S	S	S
Deck rail and tailgate caps	S	S	S	S	S	S	S	S	S
TRD Pro bedside stamping	—	—	—	S	—	—	—	—	S
Taillights and stop lights with dual vortex generators	S	S	S	S	S	S	S	S	S
Black heated power outside mirrors	S	S	—	—	S	—	—	—	—
Chrome heated power outside mirrors	—	—	S	—	—	S	—	—	—
Color-keyed heated power outside mirrors	—	P	—	S	P	—	—	—	S
Chrome heated power and auto-dimming outside mirrors with turn signal and blind spot warning indicators ⁴ and power-folding, reverse tilt-down and memory features	—	—	—	—	—	—	S	S	—
Heated power outside tow mirrors with integrated blind spot mirrors ⁵ turn signal indicators and manual-extend and -folding feature; not available on Platinum, 1794 Edition, TRD Pro and models equipped with BSM and RCTA	O	O	O	—	O	O	—	—	—
Power tilt/slide moonroof with sliding sunshade (deletes overhead console with storage area)	—	—	—	—	—	O	O	O	S
Two-speed windshield wipers	S	—	—	—	—	—	—	—	—
Variable intermittent windshield wipers	—	S	S	S	S	S	S	S	S
Windshield wiper de-icer	S	S	S	S	S	S	S	S	S
High Solar Energy-Absorbing (HSEA) glass	S	S	S	S	S	S	S	S	S
Easy lower and lift tailgate	S	S	S	S	S	S	S	S	S
Running boards	O	O	O	—	O	O	O	O	—
Front and rear mudguards	S	S	S	S	S	S	S	S	S
Front tow hooks ⁶	—	P	P	S	P	P	P	P	S
TRD front skid plate	—	—	—	S	—	—	—	—	S
Skid plate on engine, fuel tank	—	P	P	—	P	P	—	P	—
TRD Pro front and rear TRD FOX® ⁷ shocks with remote reservoirs	—	—	—	S	—	—	—	—	S
TRD Sport front and rear TRD Bilstein® ⁸ shocks and anti-sway bars (5.7L only)	—	P	—	—	P	—	—	—	—
“5.7L i-FORCE V8” engine badge (driver and front passenger door)	S	S	S	—	S	S	—	—	—
“PLATINUM” badge (driver and front passenger door)	—	—	—	—	—	—	S	—	—
“1794 EDITION” badge (driver and front passenger door)	—	—	—	—	—	—	—	S	—
Chrome 4x4 badge (lower-left portion of tailgate)	S	S	S	—	S	S	S	S	—
Chrome “TUNDRA” badge (driver and front passenger door)	—	S	S	—	S	S	—	—	—
Black “5.7L i-FORCE V8” engine badge (driver and front passenger door)	—	—	—	S	—	—	—	—	S
Black 4x4 badge (lower-left portion of tailgate)	—	—	—	S	—	—	—	—	S
Black “TUNDRA” badge (driver and front passenger door)	—	—	—	S	—	—	—	—	S
Black outside door handles	S	S	—	—	S	—	—	—	—

See numbered footnotes in Disclosures section.

S = Standard O = Optional — = Not available P = Available as part of a package

FEATURES¹ (continued)

INTERIOR	DOUBLE CAB				CREWMAX				
	SR	SR5	LIMITED	TRD PRO	SR5	LIMITED	PLATINUM	1794 EDITION	TRD PRO
Black outside door handles with touch-sensor lock/unlock feature	—	P	—	S	P	—	—	—	S
Chrome-accented outside door handles with touch-sensor lock/unlock feature	—	—	S	—	—	S	S	S	—
Black roof-mounted antenna	S	S	S	S	S	S	S	S	S
Large fuel tank (38-gallon)	—	P	S	S	P	S	S	S	S
Air conditioning with dust and pollen air filter and single temperature setting for driver and front passenger	S	S	—	—	S	—	—	—	S
Automatic dual zone climate control with dust and pollen filter and individual temperature settings for driver and front passenger	—	P	S	S	P	S	S	S	—
Integrated backup camera ⁹	S	S	S	S	S	S	S	S	S
Audio — includes six speakers, 7.0-in. touch-screen, AM/FM, Android Auto ^{TM10} & Apple CarPlay ^{®11} compatible, USB media port; ¹² two USB charge ports; ¹² hands-free phone capability, advanced voice recognition ¹³ and music streaming ¹⁴ via Bluetooth ^{®14} wireless technology, SiriusXM ^{®15} with 3-month All Access trial; ¹⁶ Connected Services ¹⁷ — Safety Connect ^{®18} with 1-year trial; ¹⁹ Wi-Fi Connect ²⁰ with up to 2 GB within 3-month trial; ²¹ See toyota.com/audio-multimedia for details.	S	—	—	—	—	—	—	—	—
Audio Plus — includes nine speakers (CrewMax models) or seven speakers (Double Cab models), 8.0-in. touch-screen, AM/FM/HD Radio; ^{TM22} USB media port; ¹² two USB charge ports; ¹² advanced voice recognition; ¹³ hands-free phone capability and music streaming ¹⁴ via Bluetooth ^{®14} wireless technology, Android Auto ^{TM10} & Apple CarPlay ^{®11} compatible, SiriusXM ^{®15} with 3-month All Access trial; ¹⁶ Connected Services ¹⁷ — SafetyConnect ^{®18} with 1-year trial; ¹⁹ Wi-Fi Connect ²⁰ with up to 2 GB within 3-month trial; ²¹ See toyota.com/audio-multimedia for details.	—	S	—	—	S	—	—	—	—
Audio Plus — includes nine speakers (CrewMax models) or seven speakers (Double Cab models), 8.0-in. touch-screen, AM/FM/HD Radio; ^{TM22} USB media port; ¹² two USB charge ports; ¹² advanced voice recognition; ¹³ hands-free phone capability and music streaming ¹⁴ via Bluetooth ^{®14} wireless technology, Android Auto ^{TM10} & Apple CarPlay ^{®11} compatible, SiriusXM ^{®15} with 3-month All Access trial; ¹⁶ Connected Services ¹⁷ — SafetyConnect ^{®18} with 1-year trial; ¹⁹ Service Connect ²³ with 10-year trial; ²⁴ Remote Connect ²⁵ with 1-year trial; ²⁶ Wi-Fi Connect ²⁰ with up to 2 GB within 3-month trial; ²¹ See toyota.com/audio-multimedia for details.	—	P	—	—	P	—	—	—	—
Premium Audio with Dynamic Navigation ²⁷ — includes nine speakers (CrewMax models) or seven speakers (Double Cab models), 8.0-in. touch-screen, AM/FM/HD Radio; ^{TM22} USB media port; ¹² two USB charge ports; ¹² Dynamic Navigation ²⁷ with up to 3-year trial; ²⁸ Dynamic POI Search, Dynamic Voice Recognition; ²⁹ hands-free phone capability and music streaming ¹⁴ via Bluetooth ^{®14} wireless technology, Android Auto ^{TM10} & Apple CarPlay ^{®11} compatible, SiriusXM ^{®15} with 3-month All Access trial; ¹⁶ Connected Services ¹⁷ — SafetyConnect ^{®18} with 1-year trial; ¹⁹ Wi-Fi Connect ²⁰ with up to 2 GB within 3-month trial; ²¹ Destination Assist ³⁰ with 1-year trial; ³¹ See toyota.com/audio-multimedia for details.	—	O	—	—	O	—	—	—	—
Premium Audio with Dynamic Navigation ²⁷ — includes nine speakers (CrewMax models) or seven speakers (Double Cab models), 8.0-in. touch-screen, AM/FM/HD Radio; ^{TM22} USB media port; ¹² two USB charge ports; ¹² Dynamic Navigation ²⁷ with up to 3-year trial; ²⁸ Dynamic POI Search, Dynamic Voice Recognition; ²⁹ hands-free phone capability and music streaming ¹⁴ via Bluetooth ^{®14} wireless technology, Android Auto ^{TM10} & Apple CarPlay ^{®11} compatible, SiriusXM ^{®15} with 3-month All Access trial; ¹⁶ Connected Services ¹⁷ — SafetyConnect ^{®18} with 1-year trial; ¹⁹ Service Connect ²³ with 10-year trial; ²⁴ Remote Connect ²⁵ with 1-year trial; ²⁶ Wi-Fi Connect ²⁰ with up to 2 GB within 3-month trial; ²¹ Destination Assist ³⁰ with 1-year trial; ³¹ See toyota.com/audio-multimedia for details.	—	P	S	S	P	S	—	—	—
Premium Audio with Dynamic Navigation ²⁷ and JBL ^{®32} — includes 12 speakers including subwoofer and amplifier, 8.0-in. touch-screen, AM/FM/HD Radio; ^{TM22} USB media port; ¹² two USB charge ports; ¹² Dynamic Navigation ²⁷ with up to 3-year trial; ²⁸ Dynamic POI Search, Dynamic Voice Recognition; ²⁹ hands-free phone capability and music streaming ¹⁴ via Bluetooth ^{®14} wireless technology, Android Auto ^{TM10} & Apple CarPlay ^{®11} compatible, SiriusXM ^{®15} with 3-month All Access trial; ¹⁶ Connected Services ¹⁷ — SafetyConnect ^{®18} with 1-year trial; ¹⁹ Service Connect ²³ with 10-year trial; ²⁴ Remote Connect ²⁵ with 1-year trial; ²⁶ Wi-Fi Connect ²⁰ with up to 2 GB within 3-month trial; ²¹ Destination Assist ³⁰ with 1-year trial; ³¹ See toyota.com/audio-multimedia for details.	—	—	P	—	—	P	S	S	S
5-passenger seating capacity	—	P	S	S	P	S	S	S	S
6-passenger seating capacity	S	S	—	—	S	—	—	—	—
Vinyl 40/20/40 split fold-down front bench seat; 4-way adjustable driver's seat; 4-way adjustable front passenger bench seat	P	—	—	—	—	—	—	—	—
Fabric-trimmed 40/20/40 split fold-down front bench seat; 4-way adjustable driver's seat; 4-way adjustable front passenger bench seat	S	S	—	—	S	—	—	—	—
Fabric-trimmed front bucket seats; 10-way power-adjustable driver's seat; 4-way adjustable front passenger seat	—	P	—	—	P	—	—	—	—
Leather-trimmed front bucket seats; 10-way power-adjustable driver's seat; 4-way adjustable front passenger seat	—	—	—	—	P	—	—	—	—
Leather-trimmed and heated front bucket seats; 10-way power-adjustable driver's seat; 6-way power-adjustable front passenger seat	—	—	S	—	—	S	—	—	—
Black TRD Pro leather-trimmed front bucket seats with red contrast stitching and TRD Pro logo; 10-way power-adjustable driver's seat; 4-way adjustable front passenger seat	—	—	—	S	—	—	—	—	S

See numbered footnotes in Disclosures section.

S = Standard O = Optional — = Not available P = Available as part of a package

FEATURES¹ (continued)

INTERIOR (continued)	DOUBLE CAB				CREWMAX				
	SR	SR5	LIMITED	TRD PRO	SR5	LIMITED	PLATINUM	1794 EDITION	TRD PRO
Perforated, leather-trimmed, heated and ventilated front bucket seats with embroidered upper backrests; 2-way power-adjustable driver's seat, which includes power thigh and lumbar support and a 2-position memory function; 6-way power-adjustable front passenger seat with power lumbar support	—	—	—	—	—	—	S	S	—
60/40 split fold-up rear seats	S	S	S	S	S	S	S	S	S
Carpet flooring and TRD Pro floor mats ³³	—	—	—	S	—	—	—	—	S
Carpet flooring (not available with Work Truck Package)	S	S	S	—	S	S	—	—	—
Carpet flooring and premium floor mats ³³	—	—	—	—	—	—	S	S	—
Heavy-duty all-weather flooring and floor mats ³³	P	—	—	—	—	—	—	—	—
Urethane tilt 4-spoke steering wheel with column shifter, <i>Bluetooth</i> ^{®14} hands-free phone, voice command, Dynamic Radar Cruise Control (DRCC); ³⁴ Lane Departure Alert (LDA) ³⁵ controls	S	—	—	—	—	—	—	—	—
Urethane tilt 4-spoke steering wheel with column shifter, audio, <i>Bluetooth</i> ^{®14} hands-free phone, voice command, Dynamic Radar Cruise Control (DRCC); ³⁴ Lane Departure Alert (LDA) ³⁵ controls	—	S	—	—	S	—	—	—	—
Urethane tilt/telescopic 4-spoke steering wheel with audio, <i>Bluetooth</i> ^{®14} hands-free phone, voice command, Dynamic Radar Cruise Control (DRCC); ³⁴ Lane Departure Alert (LDA) ³⁵ controls	—	P	—	S	P	—	—	—	S
Leather-trimmed tilt/telescopic 4-spoke steering wheel with audio, <i>Bluetooth</i> ^{®14} hands-free phone, voice command, Dynamic Radar Cruise Control (DRCC); ³⁴ Lane Departure Alert (LDA) ³⁵ controls	—	—	S	—	—	S	—	—	—
Leather-trimmed power tilt/telescopic 4-spoke steering wheel (with wood-grain-style accents — 1794 Edition only) with memory function and audio, <i>Bluetooth</i> ^{®14} hands-free phone, voice command, Dynamic Radar Cruise Control (DRCC); ³⁴ Lane Departure Alert (LDA) ³⁵ controls	—	—	—	—	—	—	S	S	—
Center console gated shifter	—	P	S	S	P	S	S	S	S
Urethane shift lever with wood-grain-style insert	—	—	—	—	—	—	—	S	—
TRD shift knob	—	P	—	S	P	—	—	—	S
4.2-in. TFT Multi-Information Display (MID) with odometer, outside temperature, fuel economy, cruising range, average speed, trip distance with timer, TPMS; ³⁶ and Integrated Trailer Brake Controller (ITBC) ³⁷ monitor (5.7L V8 only); shift-position indicator	S	S	S	S	S	S	S	S	S
Power windows with driver's-side one-touch auto down	S	S	S	—	S	S	—	—	—
Power windows with driver and front passenger one-touch auto up/down	—	—	P	S	—	P	S	S	S
Power door locks with shift-linked automatic lock/unlock feature	S	S	S	S	S	S	S	S	S
Fixed rear window	S	—	—	—	—	—	—	—	—
Sliding horizontal rear window with privacy glass	—	S	—	—	—	—	—	—	—
Power horizontal sliding rear window with privacy glass	—	—	S	S	—	—	—	—	—
Power vertical sliding rear window with defogger and privacy glass	—	—	—	—	S	S	S	S	S
Remote keyless entry system with lock, unlock and panic functions (not available with Work Truck Package)	S	S	—	—	S	—	—	—	—
Smart Key System ³⁸ on front doors with Push Button Start: remote keyless entry with lock, unlock and panic functions, and remote illuminated entry	—	P	S	S	P	S	S	S	S
Day/night rearview mirror	S	—	—	—	—	—	—	—	—
Auto-dimming rearview mirror with compass and HomeLink ^{®39} universal transceiver	—	S	—	—	S	—	—	—	—
Auto-dimming rearview mirror with HomeLink ^{®39} universal transceiver	—	P	S	S	P	S	S	S	S
Overhead console with sunglasses storage	—	—	—	—	S	S	S	S	—
Fixed center console with covered storage compartment and second-row vents (front bucket seats only)	—	P	S	S	P	S	S	S	S
Rear under-seat storage compartment	—	S	S	S	—	—	—	—	—
Two front 12V auxiliary power outlets; one rear 12V auxiliary power outlet	S	S	S	S	S	S	S	S	S
Front and rear maplights	S	S	S	S	S	S	S	S	S
Two front and two rear cup holders, four front and two rear bottle holders (three front cup holders on Limited)	S	S	S	S	—	—	—	—	—
Two front and two rear cup holders, four front and four rear bottle holders (three front cup holders on Limited, Platinum, 1794 Edition and TRD Pro)	—	—	—	—	S	S	S	S	S

See numbered footnotes in Disclosures section.

S = Standard O = Optional — = Not available P = Available as part of a package

FEATURES¹ (continued)

SAFETY AND CONVENIENCE	DOUBLE CAB				CREWMAX				
	SR	SR5	LIMITED	TRD PRO	SR5	LIMITED	PLATINUM	1794 EDITION	TRD PRO
Toyota Safety Sense™ P (TSS-P) ⁴⁰ — Pre-Collision System with Pedestrian Detection (PCS w/PD) ⁴¹ Lane Departure Alert (LDA) ³⁵ with Sway Warning System (SWS), ⁴² Automatic High Beams (AHB) ⁴³ and Dynamic Radar Cruise Control (DRCC) ³⁴	S	S	S	S	S	S	S	S	S
STAR SAFETY SYSTEM ™ Star Safety System™ — includes Vehicle Stability Control (VSC), ⁴⁴ Traction Control (TRAC), Anti-lock Brake System (ABS) with Electronic Brake-force Distribution (EBD), Brake Assist (BA) ⁴⁵ and Smart Stop Technology® (SST) ⁴⁶	S	S	S	S	S	S	S	S	S
Eight airbags ⁴⁷	S	S	S	S	S	S	S	S	S
Driver and front outboard passenger Advanced Airbag System ⁴⁷	S	S	S	S	S	S	S	S	S
Driver and front outboard passenger seat-mounted side airbags, driver and front passenger knee airbags, and front and rear Roll-sensing Side Curtain Airbags (RSCA) ⁴⁷	S	S	S	S	S	S	S	S	S
3-point seatbelts for all seating positions; driver-side Emergency Locking Retractor (ELR) and Automatic/Emergency Locking Retractor (ALR/ELR) on all passenger seatbelts	S	S	S	S	S	S	S	S	S
Driver and front passenger seatbelt pretensioners with force limiters	S	S	S	S	S	S	S	S	S
LATCH (Lower Anchors and Tethers for Children) includes lower anchors on outboard rear seats and tether anchor on rear center seat	S	S	S	S	S	S	S	S	S
Child-protector rear door locks	S	S	S	S	S	S	S	S	S
Tire Pressure Monitor System (TPMS) ³⁶	S	S	S	S	S	S	S	S	S
Front and rear parking assist sonar ⁴⁸	—	P	P	—	P	P	S	S	—
Blind Spot Monitor (BSM) ⁴ with Rear Cross-Traffic Alert (RCTA) ⁴⁹ and color-keyed rear bumper	—	P	P	—	P	P	S	S	—
Trailer-Sway Control (TSC) ⁵⁰	S	S	S	S	S	S	S	S	S
Integrated Trailer Brake Controller (ITBC) ³⁷ with Multi-Information Display (MID) monitoring screen and trailer brake type, gain and manual trailer brake output controls (5.7L V8 only)	S	S	S	S	S	S	S	S	S
Anti-theft system with engine immobilizer ⁵¹	S	S	—	—	S	—	—	—	—
Anti-theft system with alarm and engine immobilizer ⁵¹	—	P	S	S	P	S	—	—	S
Anti-theft system with alarm, Glass Breakage Sensor (GBS) and engine immobilizer ⁵¹	—	—	P	—	—	P	S	S	—
ToyotaCare ⁵² featuring a no cost maintenance plan with roadside assistance ⁵²	S	S	S	S	S	S	S	S	S

WHEELS	DOUBLE CAB				CREWMAX				
	SR	SR5	LIMITED	TRD PRO	SR5	LIMITED	PLATINUM	1794 EDITION	TRD PRO
A—18-in. styled steel wheels with P255/70R18 tires	S	S	—	—	S	—	—	—	—
B—18-in. 5-spoke alloy wheels with P275/65R18 tires	—	O	—	—	O	—	—	—	—
C—18-in. split 5-spoke SX Package black alloy wheels with P255/70R18 tires	—	P	—	—	P	—	—	—	—
D—18-in. split 5-spoke TRD Off-Road Package ⁵³ alloy wheels with P275/65R18 tires	—	P	P	—	P	P	—	P	—
E—20-in. 6-spoke TRD Sport Package wheels with P275/55R20 tires	—	P	—	—	P	—	—	—	—
F—20-in. Limited grade split 5-spoke wheels with P275/55R20 tires	—	—	S	—	—	S	—	—	—
G—20-in. 6-spoke wheels with P275/55R20 tires	—	—	—	—	—	—	S	S	—
H—20-in. 6-spoke chrome-clad alloy wheels with P275/55R20 tires	—	—	—	—	—	—	—	O	—
I—18-in. BBS ⁵⁴ forged-aluminum 5-spoke black alloy wheels with P275/65R18 tires	—	—	—	S	—	—	—	—	S

S = Standard O = Optional — = Not available P = Available as part of a package



[A]



[B]



[C]



[D]



[E]



[F]



[G]



[H]



[I]

PACKAGES AND OPTIONS

PACKAGES AND OPTIONS	DOUBLE CAB				CREWMAX				
	SR	SR5	LIMITED	TRD PRO	SR5	LIMITED	PLATINUM	1794 EDITION	TRD PRO
SR WORK TRUCK PACKAGE — adds durable vinyl seating and flooring and removes wireless door lock feature	P	—	—	—	—	—	—	—	—
SR5 LEATHER PACKAGE — adds larger fuel tank; replaces front bench seating with leather-trimmed front bucket seats with power driver's seat with power lumbar support; adds front center console with floor-mounted urethane shift lever and knob, tilt/telescopic urethane steering wheel, three front cup holders, and an anti-theft system with alarm and engine immobilizer ⁵¹	—	—	—	—	P	—	—	—	—
SR5 UPGRADE PACKAGE — adds larger fuel tank; replaces front bench seating with front bucket seats with power driver's seat with power lumbar support; adds front center console with floor-mounted urethane shift lever and knob, tilt/telescopic urethane steering wheel, three front cup holders, and an anti-theft system with alarm and engine immobilizer ⁵¹	—	P	—	—	P	—	—	—	—
CONVENIENCE PACKAGE — includes front and rear parking assist sonar, ⁴⁸ Blind Spot Monitor (BSM) ⁴ with Rear Cross-Traffic Alert (RCTA) ⁴⁹ (upgrades to color-keyed rear bumper; requires SR5 Upgrade Package on SR5 models)	—	P	—	—	P	—	S	S	—
SX PACKAGE — upgrades standard wheels to 18-in. 5-spoke black alloy wheels, replaces front bench seating with front bucket seats with power driver's seat with power lumbar support, adds color-keyed exterior styling, and removes exterior badging	—	P	—	—	P	—	—	—	—
Premium Audio with Dynamic Navigation ²⁷ — includes nine speakers (CrewMax models) or seven speakers (Double Cab models), 8-in. touch-screen, AM/FM/HD Radio, ^{TM22} USB media port; ¹² two USB charge ports; ¹² Dynamic Navigation ²⁷ with up to 3-year trial; ²⁸ Dynamic POI Search, Dynamic Voice Recognition; ²⁹ hands-free phone capability and music streaming ¹⁴ via Bluetooth ^{®14} wireless technology, Android Auto ^{TM10} & Apple CarPlay ^{®11} compatible, SiriusXM ^{®15} with 3-month All Access trial. ¹⁶ Connected Services ¹⁷ — Safety Connect ^{®18} with 1-year trial; ¹⁹ Wi-Fi Connect ²⁰ with up to 2 GB within 3-month trial; ²¹ Destination Assist ³⁰ with 1-year trial. ³¹ See toyota.com/audio-multimedia for details.	—	O	—	—	O	—	—	—	—
TRD OFF-ROAD PACKAGE ⁵³ — upgrades standard wheels to 18-in. split 5-spoke TRD Off-Road Package alloy wheels and all-terrain P275/65R18 tires; includes trail-tuned Bilstein ^{®8} shock absorbers, engine skid plate, fuel tank skid plate, front tow hooks ⁵ (on 4x2 models; standard on 4x4 models), LED headlights and LED fog lights (on SR5 models only), TRD Off-Road floor mats ³³ (on SR5 and Limited models only), and bedside TRD Off-Road decals	—	P	P	—	P	P	—	P	—
TRD SPORT PACKAGE — upgrades standard wheels to 20-in. 6-spoke TRD Sport Package alloy wheels and P275/55R20 tires; includes sport-tuned Bilstein ^{®8} shock absorbers, TRD front and rear anti-sway bars, color-keyed accents (grille surround, mirror caps, front and rear bumper), LED headlights and LED fog lights, TRD Sport floor mats; ³³ TRD shift knob, hood scoop and bedside TRD Sport decals; requires SR5 Upgrade Package	—	P	—	—	P	—	—	—	—
TRD SPORT CONVENIENCE PACKAGE — includes front and rear parking assist sonar, ⁴⁸ Blind Spot Monitor (BSM) ⁴ with Rear Cross-Traffic Alert (RCTA); ⁴⁹ requires TRD Sport Package	—	P	—	—	P	—	—	—	—
LIMITED PREMIUM PACKAGE — includes front and rear parking assist sonar, ⁴⁸ Blind Spot Monitor (BSM) ⁴ with Rear Cross-Traffic Alert (RCTA) ⁴⁹ (upgrades to color-keyed rear bumper), with additional convenience features including: power windows with driver and front passenger auto up/down; cab, driver footwell and ignition key illuminated entry system; an anti-theft system with alarm, Glass Breakage Sensor (GBS), engine immobilizer; ⁵¹ and Premium Audio with Dynamic Navigation ²⁷ and JBL ^{®32} (JBL ^{®32} Audio on CrewMax models only)	—	—	P	—	—	P	—	—	—
Deck rail system ³ with four adjustable tie-down cleats	O	O	S	S	O	S	S	S	S
Heated power outside tow mirrors with integrated blind spot mirrors; ⁵ turn signal indicators and manual-extend and -folding feature (5.7L V8 only; not available with BSM with RCTA)	O	O	O	—	O	O	—	—	—
Running boards	O	O	O	—	O	O	O	O	—
Power tilt/slide moonroof with sliding sunshade	—	—	—	S	—	O	O	O	S

See numbered footnotes in Disclosures section.

S = Standard O = Optional — = Not available P = Available as part of a package

SPECIFICATIONS

MECHANICAL	DOUBLE CAB				CREWMAX				
	SR	SR5	LIMITED	TRD PRO	SR5	LIMITED	PLATINUM	1794 EDITION	TRD PRO
ENGINE									
5.7-Liter Aluminum i-FORCE V8 with DOHC 32-Valve cylinder heads with Acoustic Control Induction System (ACIS), Dual Independent Variable Valve Timing with intelligence (VVT-i) and 4-2-1 tubular stainless steel exhaust manifold; 381 hp @ 5600 rpm; 401 lb.-ft. @ 3600 rpm	S	S	S	S	S	S	S	S	S
IGNITION SYSTEM									
Electronic, with Toyota Direct Ignition (TDI)	S	S	S	S	S	S	S	S	S
Heavy-duty battery and heavy-duty alternator	S	S	S	S	S	S	S	S	S
EXHAUST SYSTEM									
TRD dual black-chrome-tipped stainless steel exhaust system	—	—	—	S	—	—	—	—	S
Standard stainless steel exhaust system	S	S	S	—	S	S	S	S	—
EMISSION RATING									
Low Emission Vehicle II (LEV-II)	S	S	S	S	S	S	S	S	S
TRANSMISSION									
6-speed Electronically Controlled automatic Transmission with intelligence (ECT-i), sequential shift mode and uphill/downhill shift logic	S	S	S	S	S	S	S	S	S
Ratios: 5.7L V8	S	S	S	S	S	S	S	S	S
1st gear = 3.33									
2nd gear = 1.96									
3rd gear = 1.35									
4th gear = 1.00									
5th gear = 0.73									
6th gear = 0.59									
Reverse = 3.06									
Rear differential = 4.30	S	S	S	S	S	S	S	S	S
4WD transfer case (high/low range) = 1.00/2.64	S	S	S	S	S	S	S	S	S
DRIVETRAIN									
Rear-Wheel Drive (RWD) with Automatic Limited-Slip Differential (Auto LSD) ⁵⁵	S	S	S	—	S	S	S	S	—
4WDEmand part-time 4WD with electronically controlled transfer case, Active Traction Control (A-TRAC) and Automatic Limited-Slip Differential (Auto LSD) ⁵⁵	O	O	O	S	O	O	O	O	S

SPECIFICATIONS (continued)

SUSPENSION	DOUBLE CAB				CREWMAX				
	SR	SR5	LIMITED	TRD PRO	SR5	LIMITED	PLATINUM	1794 EDITION	TRD PRO
Independent coil-spring high-mounted double-wishbone front suspension with stabilizer bar and low-pressure nitrogen gas-filled shock absorbers; live axle with trapezoidal multi-leaf rear suspension with staggered outboard-mounted low-pressure nitrogen gas-filled shock absorbers	S	S	S	—	S	S	S	S	—
Independent TRD coil-spring high-mounted double-wishbone front suspension with a 2-in. lift with stabilizer bar and TRD FOX ^{®7} front shock absorbers with piggyback reservoirs; live rear axle with trapezoidal multi-leaf rear suspension with staggered outboard-mounted TRD FOX ^{®7} shock absorbers with piggyback reservoirs	—	—	—	S	—	—	—	—	S
STEERING									
Hydraulic power rack-and-pinion	S	S	S	S	S	S	S	S	S
Steering wheel turns, lock-to-lock	3.71	3.71	3.71	3.71	3.71	3.71	3.71	3.71	3.71
Turning circle diameter, curb to curb (ft.) (Standard Bed/Long Bed) (Short Bed on CrewMax)	44.0/49.0	44.0/49.0	44.0/—	44.0/—	44.0	44.0	44.0	44.0	44.0
BRAKES									
Power-assisted ventilated 13.9-in. front disc brakes with opposed 4-piston brake calipers; ventilated 13.6-in. rear disc brakes, and Star Safety System™	S	S	S	S	S	S	S	S	S
WEIGHTS AND CAPACITIES									
BASE CURB WEIGHT (lbs.)									
5.7L V8 Standard Bed (4x2/4x4)	5,170/5,470	5,170/5,470	5,240/5,530	—/5470	—/—	—/—	—/—	—/—	—/—
5.7L V8 Long Bed (4x2/4x4)	5,300/5,600	5,300/5,600	—/—	—/—	—/—	—/—	—/—	—/—	—/—
5.7L V8 Short Bed (4x2/4x4)	—/—	—/—	—/—	—/—	5,340/5,640	5,380/5,680	5,380/5,670	5,380/5,670	—/5,640
GROSS VEHICLE WEIGHT RATING (GVWR) (lbs.)									
5.7L V8 Standard Bed (4x2/4x4)	6,900/7,100	6,900/7,100	6,900/7,100	—/7,100	—/—	—/—	—/—	—/—	—/—
5.7L V8 Long Bed (4x2/4x4)	7,000/7,200	7,000/7,200	—/—	—/—	—/—	—/—	—/—	—/—	—/—
5.7L V8 Short Bed (4x2/4x4)	—/—	—/—	—/—	—/—	7,000/7,200	7,000/7,200	7,000/7,200	7,000/7,200	—/7,200
MAXIMUM PAYLOAD⁵⁶ (lbs.)									
5.7L V8 Standard Bed (4x2/4x4)	1,730/1,630	1,730/1,630	1,660/1,570	—/1,630	—/—	—/—	—/—	—/—	—/—
5.7L V8 Long Bed (4x2/4x4)	1,700/1,600	1,700/1,600	—/—	—/—	—/—	—/—	—/—	—/—	—/—
5.7L V8 Short Bed (4x2/4x4)	—/—	—/—	—/—	—/—	1,660/1,560	1,620/1,520	1,620/1,530	1,620/1,530	—/1,560
MAXIMUM TOWING⁶ (lbs.)									
5.7L V8 Tow Package includes: towing receiver hitch, 4.30 axle ratio, TOW/HAUL mode switch, trailer brake controller, supplemental engine oil cooler, supplemental transmission cooler, heavy-duty battery, 170-amp alternator and 4-/7-pin connector	S	S	S	S	S	S	S	S	S
5.7L V8 Standard Bed (4x2/4x4)	10,200/9,900	10,200/9,900	10,100/9,100	—/ 9,900	—/—	—/—	—/—	—/—	—/—
5.7L V8 Long Bed (4x2/4x4)	10,100/9,800	10,100/9,800	—/—	—/—	—/—	—/—	—/—	—/—	—/—
5.7L V8 Short Bed (4x2/4x4)	—/—	—/—	—/—	—/—	10,100/9,800	9,400/8,800	9,400/8,800	9,400/8,800	—/9,200
FUEL TANK									
26.4-gal.	S	S	—	—	S	—	—	—	—
38.0-gal.	—	O	S	S	O	S	S	S	S

See numbered footnotes in Disclosures section.

S = Standard O = Optional — = Not available P = Available as part of a package

SPECIFICATIONS (continued)

DIMENSIONS	DOUBLE CAB				CREWMAX				
	SR	SR5	LIMITED	TRD PRO	SR5	LIMITED	PLATINUM	1794 EDITION	TRD PRO
EXTERIOR DIMENSIONS (in.)									
Overall height (4x2/4x4)	76.0/76.4	76.0/76.4	76.0/76.2	—/77.2	75.8/76.2	75.8/76.2	75.8/76.2	75.8/76.2	—/77.2
Overall width	79.9	79.9	79.9	—/79.9	79.9	79.9	79.9	79.9	—/79.9
Overall length (Standard Bed)	228.9	228.9	228.9	228.9	—	—	—	—	—
Overall length (Long Bed)	247.8	247.8	—	—	—	—	—	—	—
Overall length (Short Bed)	—	—	—	—	228.9	228.9	228.9	228.9	228.9
Wheelbase (Standard Bed)	145.7	145.7	145.7	145.7	—	—	—	—	—
Wheelbase (Long Bed)	164.6	164.6	—	—	—	—	—	—	—
Wheelbase (Short Bed)	—	—	—	—	145.7	145.7	145.7	145.7	145.7
Inside bed length (Standard Bed)	78.7	78.7	78.7	78.7	—	—	—	—	—
Inside bed length (Long Bed)	97.6	97.6	—	—	—	—	—	—	—
Inside bed length (Short Bed)	—	—	—	—	66.7	66.7	66.7	66.7	66.7
Bed depth	22.2	22.2	22.2	22.2	22.2	22.2	22.2	22.2	22.2
Bed width at tailgate	66.4	66.4	66.4	66.4	66.4	66.4	66.4	66.4	66.4
Bed width (between wheelwells)	50.0	50.0	50.0	50.0	50.0	50.0	50.0	50.0	50.0
Track (front/rear)	67.9/67.9	67.9/67.9	67.9/67.9	67.9/67.9	67.9/67.9	67.9/67.9	67.9/67.9	67.9/67.9	67.9/67.9
Ground clearance (4x2/4x4)	10.2*/10.6	10.2*/10.6	10.2/10.4	—/10.6	10.2/10.6	10.0/10.4	10.4/10.4	10.4/10.4	—/10.6
INTERIOR DIMENSIONS, front/rear (in.)									
Head room	39.7/38.7	39.7/38.7	39.7/38.7	39.7/38.7	39.7/38.7	39.7/38.9	39.7/38.9	39.7/38.9	39.7/38.9
Hip room	62.6/62.6	62.6/62.6	62.6/62.6	62.6/62.6	62.6/60.4	62.6/60.4	62.6/60.4	62.6/60.4	62.6/60.4
Leg room	42.5/34.7	42.5/34.7	42.5/34.7	42.5/34.7	42.5/42.3	42.5/42.3	42.5/42.3	42.5/42.3	42.5/42.3
Shoulder room	65.7/65.6	65.7/65.6	65.7/65.6	65.7/65.6	65.7/65.5	65.7/65.5	65.7/65.5	65.7/65.5	65.7/65.5
TIRES									
Type — All-Season	S	S	S	S	S	S	S	S	S
Spare — Full-size mounted under body	S	S	S	S	S	S	S	S	S
MILEAGE ESTIMATES (mpg city/highway/combined)⁵⁷									
5.7L V8 4x2	13/18/15	13/18/15	13/18/15	—	13/18/15	13/18/15	13/18/15	13/18/15	—
5.7L V8 4x4	13/17/14	13/17/14	13/17/14	13/17/14	13/17/14	13/17/14	13/17/14	13/17/14	13/17/14

*10.4-in. with Standard Bed.

CARS BUILT FOR THE WAY YOU LIVE

At Toyota, we build cars for how you live. From building advanced safety features designed to help prevent crashes to driving cross-country to understand how we can make your driving experience better, our work starts with understanding your needs. Building cars for how you live also means thinking about tomorrow — from fuel efficiency and environmental innovations, to things beyond cars, like a bicycle that you can control with your mind. And because what we learn building cars can help improve lives in other places, we do things like help communities rebuild their homes quickly after a disaster and work with soup kitchens to help them serve more people faster. Toyota. Built for how you live. Together we are going places.

DISCLOSURES

1. Toyota strives to build vehicles to match customer interest and thus they typically are built with popular options and option packages. Not all options/packages are available separately and some may not be available in all regions of the country. See toyota.com for information about options/packages commonly available in your area. If you would prefer a vehicle without any or with different options, contact your dealer to check for current availability or the possibility of placing a special order. Color(s) depicted may vary based on multiple factors, including ambient lighting and the format in which it is being viewed (e.g., computer, mobile device or print). **2.** Rigid Industries® is a registered trademark of JST Performance, LLC d/b/a Rigid Industries. **3.** Standard on Limited, Platinum, 1794 Edition and TRD Pro grades; available on SR and SR5 grades. **4.** Do not rely exclusively on the Blind Spot Monitor. Always look over your shoulder and use your turn signal. There are limitations to the function, detection and range of the monitor. See *Owner's Manual* for additional limitations and details. **5.** Do not rely exclusively on the blind-spot mirror. Always look over your shoulder and use your turn signal. There are limitations to the function of the mirror. See *Owner's Manual* for additional limitations and details. **6.** Before towing, confirm your vehicle and trailer are compatible, hooked up and loaded properly and that you have any necessary additional equipment. Do not exceed any Weight Ratings and follow all instructions in your *Owner's Manual*. The maximum you can tow depends on base curb weight plus the total weight of any cargo, occupants, and added vehicle equipment. "Added vehicle equipment" includes additional standard/optional equipment and accessories added by the manufacturer, dealers, and/or vehicle owners. The only way to be certain of your vehicle's exact curb weight is to weigh your vehicle without passengers or cargo. **7.** FOX® is a registered trademark of FOX Factory, Inc. (©FOX Factory, Inc.) **8.** Bilstein® is a registered trademark of ThyssenKrupp Bilstein GmbH FVE REP GERMANY. **9.** The backup camera does not provide a comprehensive view of the rear area of the vehicle and you should also look around the vehicle, using mirrors to confirm rearward clearance. Environmental conditions may limit effectiveness and view may become obscured. See *Owner's Manual* for additional limitations and details. **10.** Vehicle user interface is a product of Google and its terms and privacy statement apply. To use Android Auto on your car display, you'll need an Android Auto compatible vehicle or aftermarket stereo, an Android phone running Android 5.0 or higher, and the Android Auto app. Google, Android and Android Auto are trademarks of Google LLC. **11.** Apps and services are subject to change at any time without notice. Data charges may apply. Apple CarPlay® functionality requires a compatible iPhone® connected with an approved data cable into the USB media port. Apple CarPlay® is a registered trademark of Apple Inc. **12.** May not be compatible with all mobile phones, MP3/WMA players and like models. **13.** Advanced voice recognition capabilities vary by head unit. **14.** The Bluetooth® word mark and logos are registered trademarks owned by Bluetooth SIG, Inc., and any use of such marks by Toyota is under license. A compatible Bluetooth®-enabled phone must first be paired. Phone performance depends on software, coverage and carrier. **15.** SiriusXM® audio services require a subscription sold separately by Sirius XM Radio Inc. If you decide to continue service after your trial, the subscription plan you choose will automatically renew thereafter and you will be charged according to your chosen payment method at then-current rates. Fees and taxes apply. To cancel, you must call SiriusXM at 1-866-635-2349. See SiriusXM Customer Agreement for complete terms at www.siriusxm.com. All fees and programming subject to change. Not all vehicles or devices are capable of receiving all services offered by SiriusXM. Current information and features may not be available in all locations, or on all receivers. ©2019 Sirius XM Radio Inc. SiriusXM and all related marks and logos are trademarks of Sirius XM Radio Inc. **16.** SiriusXM All Access trial length and service availability may vary by model, model year or trim. **17.** Connected Services depends on an operative telematics device, a cellular connection, navigation map data, GPS signal strength and other factors outside of Toyota's control, all of which can limit system functionality or availability, including access to response center and emergency support. Service may vary by vehicle and region. Apps and services subject to change at any time without notice. See toyota.com/connected-services for details. To learn about Toyota's data collection, use, sharing and retention, please visit <https://www.toyota.com/privacyvts/>. Stolen vehicle police report required to use Stolen Vehicle Locator. **18.** Toyota Safety Connect® depends on an operative telematics device, a cellular connection, navigation map data and GPS signal strength and other factors outside of Toyota's control, all of which can limit system functionality or availability, including access to response center and emergency support. Stolen vehicle police report required to use Stolen Vehicle Locator. Registration required. Service subject to change at any time without notice. Terms and conditions of subscription service agreement apply. Service may vary by vehicle and region. See usage precautions and service limitations in *Owner's Manual* and at toyota.com/connected-services/ for additional details. To learn about Toyota's data collection, use, sharing and retention, please visit <https://www.toyota.com/privacyvts/>. **19.** The Safety Connect® trial period is at no extra cost and begins on the original date of purchase or lease of a new vehicle. After the trial period expires, enrollment in paid subscription is required to access the service. **20.** Eligible vehicle and wireless service required. Coverage and service not available everywhere. Valid in the contiguous U.S. and Alaska. Do not drive distracted. Go to att.com/toyota for terms and conditions. **21.** The Wi-Fi Connect trial period is at no extra cost and begins on the date of activation. After the trial period expires, enrollment in a paid subscription is required to access the service. Terms and conditions apply. **22.** HD Radio™ Technology manufactured under license from iBiquity Digital Corporation U.S. and Foreign Patents. HD Radio™ and the HD, HD Radio, and "Arc" logos are proprietary trademarks of iBiquity Digital Corp. **23.** Information provided is based on the last time data was collected from the vehicle and may not be up to date. Service Connect depends on an operative telematics device, a cellular connection, navigation map data, GPS signal strength and other factors outside of Toyota's control, which can limit functionality or availability. Service may vary by vehicle and region. Registration required. Service subject to change at any time without notice. Terms and conditions of subscription service agreement apply. See usage precautions and service limitations in *Owner's Manual* and at toyota.com/connected-services for additional details. To learn about Toyota's data collection, use, sharing and retention, please visit <https://www.toyota.com/privacyvts/>. **24.** The Service Connect trial period is at no extra cost and begins on the original date of purchase or lease of a new vehicle. After the respective trial period expires, enrollment in paid subscription is required to access the service. **25.** Use only if aware of circumstances surrounding vehicle and it is legal and safe to do so (e.g., do not remotely start engine if vehicle is in an enclosed space or vehicle is occupied by a child). Remote Connect depends on an operative telematics device, a cellular connection, GPS signal strength and other factors outside of Toyota's control, which can limit system functionality and availability. Service may vary by vehicle and region. Registration and app download required. Terms and conditions of subscription service agreement apply. Data charges may apply. Remote start/stop not available on manual-transmission-equipped vehicles. Services subject to change at any time without notice. See usage precautions and service limitations in *Owner's Manual* and at <https://www.toyota.com/connected-services> for additional details. To learn about Toyota's data collection, use, sharing and retention, please visit <https://www.toyota.com/privacyvts/>. **26.** The Remote Connect trial period is at no extra cost and begins on the original date of purchase or lease of a new vehicle. After the trial period expires, enrollment in a paid subscription is required to access the service. Terms and conditions apply. **27.** Dynamic Navigation depends on an operative telematics device, a cellular connection, navigation map data and GPS signal strength, and other factors outside of Toyota's control, which can limit system functionality or availability. Services not available in every city or roadway. Use common sense when relying on information provided. Service may vary by vehicle and region. Registration is required. Terms and conditions of subscription services agreement apply. See *Owner's Manual* and <https://toyota.com/connected-services> for additional limitations and details. To learn about Toyota's data collection, use, sharing and retention, please visit <https://www.toyota.com/privacyvts/>. **28.** The Dynamic Navigation three-year trial period begins on the original date of purchase or lease of a new vehicle. After the trial period expires, enrollment in paid subscription is required to access the service. **29.** Dynamic voice recognition capabilities vary by head unit. **30.** Destination Assist depends on an operative telematics device, a cellular connection, navigation map data and GPS signal strength and other factors outside of Toyota's control, which can limit system ability functionality or availability. Use common sense when relying on this information. Service may vary by vehicle and region. Registration required. Services subject to change at any time without notice. Terms and conditions of subscription services agreement apply. See *Owner's Manual* and toyota.com/connected-services for additional limitations and details. To learn about Toyota's data collection, use, sharing and retention, please visit <https://www.toyota.com/privacyvts/>. **31.** The Destination Assist Connect trial period is at no extra cost and begins on the original date of purchase or lease of a new vehicle. After the trial period expires, enrollment in a paid subscription is required to access the service. **32.** JBL® is a registered trademark of Harman International Industries, Inc. **33.** This floor mat/floor liner was designed specifically for use in your model and model year vehicle and SHOULD NOT be used in any other vehicle. To avoid potential interference with pedal operation, each mat/liner must be secured with its fasteners. Do not install a floor mat/floor liner on top of an existing floor mat/floor liner. **34.** Dynamic Radar Cruise Control is designed to assist the driver and is not a substitute for safe and attentive driving practices. System effectiveness is dependent on many factors including road, weather and traffic conditions. DRCC not available on manual transmissions. See *Owner's Manual* for additional limitations and details. **35.** Lane Departure Alert is designed to read visible lane markers under certain conditions, and provide visual and audible alerts when lane departure is detected. It is not a collision-avoidance system or a substitute for safe and attentive driving. Effectiveness is dependent on many factors including road, weather and vehicle conditions. See *Owner's Manual* for additional limitations and details. **36.** The Tire Pressure Monitor System alerts the driver when tire pressure is critically low. For optimal tire wear and performance, tire pressure should be checked regularly with a gauge; do not rely solely on the monitor system. See *Owner's Manual* for additional limitations and details. **37.** The Integrated Trailer Brake Controller is an electronic system that operates in tandem with a properly equipped trailer with an electric braking system. It is designed to help the driver maintain trailer control by increasing or reducing trailer braking based on trailer weight. It is not a substitute for safe towing practices. Factors including speed, road conditions and driver input can all affect trailer braking control. See *Owner's Manual* for additional limitations and details. **38.** The Smart Key System may interfere with

DISCLOSURES (continued)

some pacemakers or cardiac defibrillators. If you have one of these medical devices, please talk to your doctor to see if you should deactivate this system. **39.** HomeLink® and the HomeLink® house icon are registered trademarks of Gentex Corporation. **40.** Toyota Safety Sense™ effectiveness is dependent on many factors including road, weather and vehicle conditions. Drivers are responsible for their own safe driving. Always pay attention to your surroundings and drive safely. See *Owner's Manual* for additional limitations and details. **41.** The Pre-Collision System (PCS) with Pedestrian Detection (PD) is designed to determine if impact is imminent and help reduce impact speed and damage in certain frontal collisions involving a vehicle or a pedestrian. PCS w/PD is not a substitute for safe and attentive driving. System effectiveness depends on many factors, such as speed, size and position of pedestrian, and weather, light and road conditions. See *Owner's Manual* for additional limitations and details. **42.** Sway Warning is designed to provide a visual and audible alert if it detects a pattern of vehicle movement that might indicate driver inattention or drowsiness. It is not a collision-avoidance system or a substitute for safe and attentive driving. Effectiveness is dependent on many factors including road, weather and vehicle conditions. See *Owner's Manual* for additional limitations and details. **43.** Automatic High Beams operate at speeds above 25 mph. Factors such as a dirty windshield, weather, lighting and terrain limit effectiveness, requiring the driver to manually operate the high beams. See *Owner's Manual* for additional limitations and details. **44.** Vehicle Stability Control is an electronic system designed to help the driver maintain vehicle control under adverse conditions. It is not a substitute for safe and attentive driving practices. Factors including speed, road conditions, weather and driver steering input can all affect whether VSC will be effective in preventing a loss of control. See *Owner's Manual* for additional limitations and details. **45.** Brake Assist is designed to help the driver take advantage of ABS and is not a substitute for safe driving practices. Braking effectiveness also depends on proper vehicle maintenance, tire and road conditions. See *Owner's Manual* for additional limitations and details. **46.** Smart Stop Technology® operates only in the event of certain contemporaneous brake and accelerator pedal applications. When engaged, the system will reduce power to help the brakes bring the vehicle to a stop. Factors including speed, road conditions and driver input can all impact stopping distance. Smart Stop Technology® is not a substitute for safe and attentive driving and does not guarantee instant stopping. See *Owner's Manual* for additional limitations and details. **47.** Airbag systems are Supplemental Restraint Systems and are designed to inflate only under certain conditions and in certain types of severe collisions. To decrease the risk of injury from an inflating airbag, always wear seatbelts and sit upright in the middle of the seat as far back as possible. Do not put objects in front of an airbag or around the seatback. Do not use a rearward-facing child seat in any front passenger seat. See *Owner's Manual* for additional limitations and details. **48.** Front and rear parking assist sonar is designed to warn drivers of potential front and rear collisions at speeds of 6 mph or less. Certain vehicle and environmental factors, including an object's shape and composition, may affect the ability of the front and rear parking assist sonar to detect it. Always look around outside the vehicle and use mirrors to confirm clearance. See *Owner's Manual* for additional limitations and details. **49.** Do not rely exclusively on the Rear Cross-Traffic Alert system. Always look over your shoulder and use your mirrors to confirm rear clearance. There are limitations to the function, detection and range of the system. See *Owner's Manual* for additional limitations and details. **50.** Trailer-Sway Control (TSC) is an electronic system designed to help the driver maintain vehicle control under adverse conditions. It is not a substitute for safe driving practices. Factors including speed, road conditions, weather and driver steering input can all affect whether TSC will be effective in preventing a loss of control. See *Owner's Manual* for additional limitations and details. **51.** The engine immobilizer is a state-of-the-art anti-theft system that is initiated when you insert your key into the ignition switch or bring a Smart Key fob into the vehicle. The engine will only start if the code in the transponder chip inside the key/fob matches the code in the vehicle's immobilizer. The transponder chip is embedded in the key/fob and can be costly to replace. If you lose a key or fob, your Toyota dealer can help or go to www.aloa.org to find a qualified locksmith in your area who can perform high-security key service. **52.** ToyotaCare covers normal factory scheduled maintenance at no additional cost for two years or 25,000 miles, whichever comes first. Certain models require a different maintenance schedule as described in their Maintenance Guide. 24-hour Roadside Assistance is also included for two years, unlimited mileage. Roadside Assistance does not include parts and fluids, except emergency fuel delivery. See Toyota dealer for details and exclusions. Valid only in the continental U.S. and Alaska. **53.** The Toyota Tundra is designed to meet most off-road driving requirements, but off-roading is inherently dangerous and may result in vehicle damage. Toyota encourages responsible operation to help protect you, your vehicle and the environment. Seatbelts should be worn at all times. Do not allow passengers to ride in cargo area. **54.** BBS® is a registered trademark of BBS of America, Inc. **55.** Auto LSD is an electronic, brake-actuated limited-slip differential that automatically activates when VSC is disengaged at low speeds. See *Owner's Manual* for additional limitations and details. **56.** Payload Capacity is the calculation of GVWR minus curb weight and should be used for comparison purposes only. The maximum amount of passenger and cargo weight your vehicle can carry is the Load Carrying Capacity indicated on the label(s) on the driver's doorjamb. **57.** 2020 preliminary mpg estimates determined by Toyota. EPA estimates not available at time of posting. Actual mileage will vary. **58.** Vehicle's projected resale value is specific to the 2019 model year. For more information, visit Kelley Blue Book's KBB.com. Kelley Blue Book is a registered trademark of Kelley Blue Book Co., Inc. **59.** Requires adequate cellular coverage and GPS signal strength. May not work in all areas. Service may vary by vehicle and region. See Toyota Dealer for details and exclusions. **60.** Building and/or parking structures may limit system effectiveness. Stolen vehicle police report required to use Stolen Vehicle Locator. For additional assistance, contact the Toyota Customer Experience Center at 1-800-331-4331. **61.** Not all smartwatches are compatible with Remote Connect: Samsung Gear, Fitbit, Garmin are not compatible. **62.** The universal tablet holder is intended for passengers only. Drivers should always be sure to obey traffic regulations and maintain awareness of the road and traffic conditions at all times. Use of aftermarket accessories may pose an increased risk of injury to occupants in the event of an accident. Tablet sold separately. **63.** iPhone® is a registered trademark of Apple Inc. All rights reserved. **64.** Google is a trademark of Google LLC. **65.** Always drive safely and obey traffic laws. Functionality depends on many factors outside of Toyota's control. Actions and services subject to change at any time without notice. To learn more, go to <https://www.toyota.com/connected-services>. **66.** Based on manufacturers' data as of July 2019. **67.** Cargo and load capacity limited by weight and distribution. Always properly secure cargo and cargo area. **68.** Rated for 12 volts. See *Owner's Manual* for additional limitations and details. **69.** Amazon, Alexa and all related logos are trademarks of Amazon.com, Inc. or its affiliates. Requires adequate signal strength and smartphone. See applicable application for details. Not all Amazon Alexa functionality is available for in-vehicle use and some functions depend on smart home technology. Download of the Toyota+Alexa app is required to begin in-vehicle use of Alexa. Data charges may apply. Apps, prices and services subject to change at any time without notice. To learn more, go to <https://www.toyota.com/audio-multimedia>. To learn more about Toyota's data collection, use, sharing and retention, please visit <https://www.toyota.com/privacytvs/>. **70.** Ultrasuede® is a registered trademark of Toray Industries, Inc. **71.** Camera accessory not included with purchase. **72.** Requires deck rail system. **73.** Genuine Toyota Paint Protection Film by 3M™ is designed for specific sections of the vehicle most prone to chipping and may vary depending on vehicle model. Select applications may require an additional charge. Toyota Genuine Accessory Warranty only applies when installation is performed by a trained Toyota-approved installer. See Toyota dealer for details.

Toyota strives to build vehicles to match customer interest and thus they typically are built with popular options and option packages. Not all options/packages are available separately and some may not be available in all regions of the country. See toyota.com for information about options/packages commonly available in your area. If you would prefer a vehicle without any or with different options, contact your dealer to check for current availability or the possibility of placing a special order. Color(s) depicted may vary based on multiple factors, including ambient lighting and the format in which it is being viewed (e.g., computer, mobile device or print).

Toyota Tundra is designed to meet most off-road driving requirements. Abusive use may result in bodily harm or damage. Toyota encourages responsible operation to protect you, your vehicle and the environment. Seatbelts should be worn at

all times. Please do not allow passengers to ride in the cargo area. Towing hitch receiver/ball mount kits are not intended to provide crash protection. For details on vehicle specifications, standard features and available equipment in your area, contact your Toyota dealer. A vehicle with particular equipment may not be available at the dealership. Ask your Toyota dealer to help locate a specifically equipped vehicle.

All information presented herein is based on data available at the time of posting, is subject to change without notice and pertains specifically to mainland U.S.A. vehicles only. Vehicles shown may be prototypes and/or shown with options. Actual models may vary.

WARRANTIES

Every Toyota Car, Truck and SUV is built to exceptional standards. And that's not idle boasting. We back it up with these Limited Warranty Coverages:

Basic: 36 months/36,000 miles (all components other than normal wear and maintenance items).

Powertrain: 60 months/60,000 miles (engine, transmission/transaxle, drive system, seatbelts and airbags).

Rust-Through: 60 months/unlimited miles (corrosion perforation of sheet metal).

Emissions: Coverages vary under Federal and California regulations. Refer to applicable *Warranty and Maintenance Guide* for details.

Accessories: For Genuine Toyota Accessories purchased at the time of the new vehicle purchase, the Toyota Accessory Warranty coverage is in effect for 36 months/36,000 miles from the vehicle's in-service date, which is the same coverage as the Toyota New Vehicle Limited Warranty.

For Genuine Toyota Accessories purchased after the new vehicle purchase the coverage is 12 months, regardless of mileage, from the date the accessory was installed on the vehicle, or the remainder of any applicable new vehicle warranty, whichever provides greater coverage.

You may be eligible for transportation assistance if it's necessary that your vehicle be kept overnight for repairs covered under warranty. Please see your authorized Toyota dealership for further details.

For complete details about Toyota's warranties, please visit www.toyota.com, refer to the applicable *Warranty and Maintenance Guide* or see your Toyota dealer.



For Toyota Mobility program details, go to www.toyota.com/mobility or call the Toyota Customer Assistance Center at 1-800-331-4331

